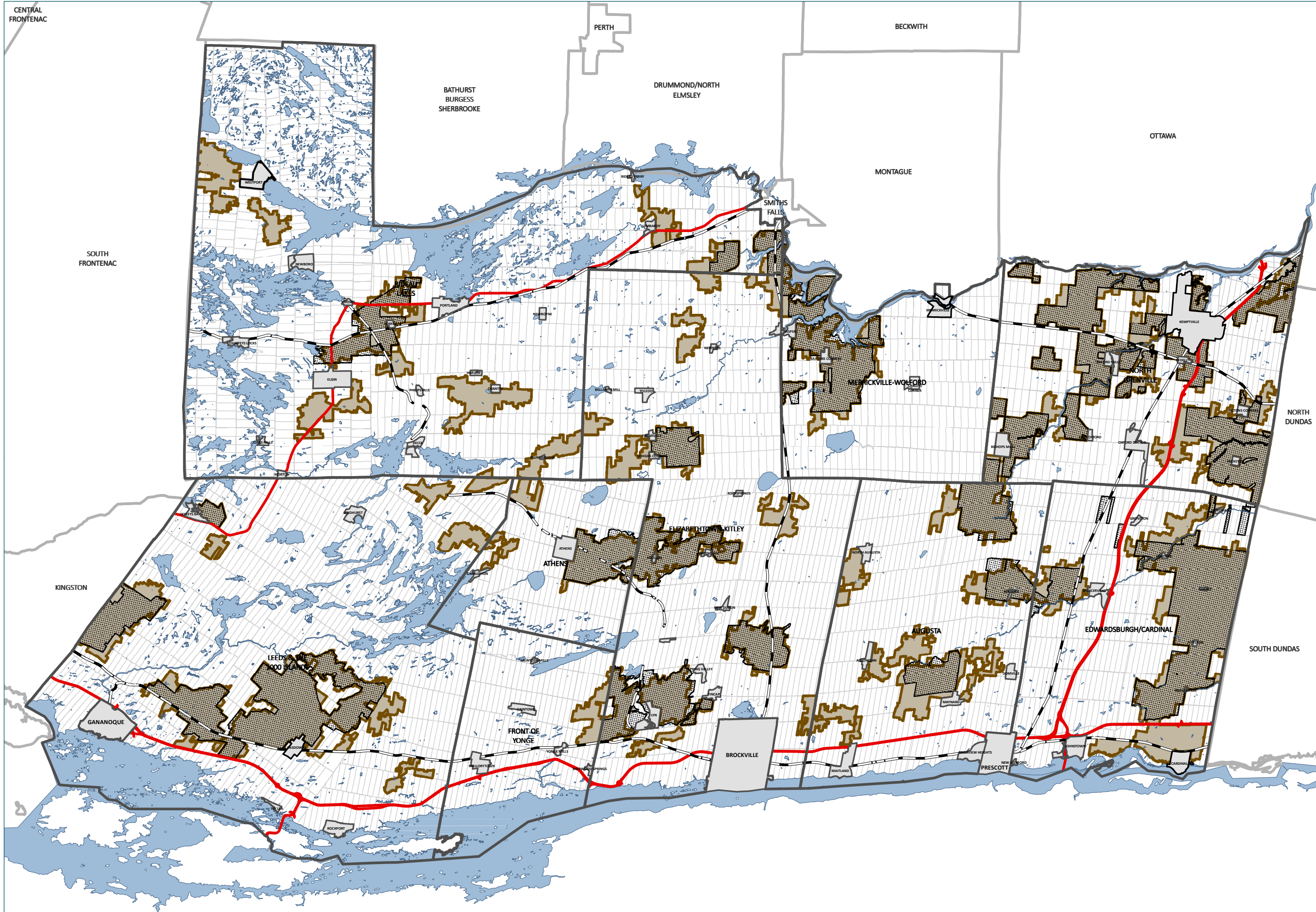


# UNITED COUNTIES OF LEEDS & GRENVILLE PRIME RECOMMENDATION & EXISTING PRIME AGRICULTURAL DESIGNATION



- RECOMMENDATION**
- Prime Agriculture
- OFFICIAL PLAN DESIGNATION**
- Prime Agricultural Lands (Current Official Plan)

The information displayed on this map has been compiled from various sources. While every effort has been made to accurately depict the information, this map should not be relied on as being a precise indicator of locations.

Copyright United Counties of Leeds and Grenville, 2023. All rights reserved.

May not be reproduced without permission. This is not survey data.

0 1,500 3,000 6,000 Metres

SRG  
SOIL RESOURCE GROUP

PLANSCAPE  
BUILDING COMMUNITY THROUGH PLANNING

September 2023