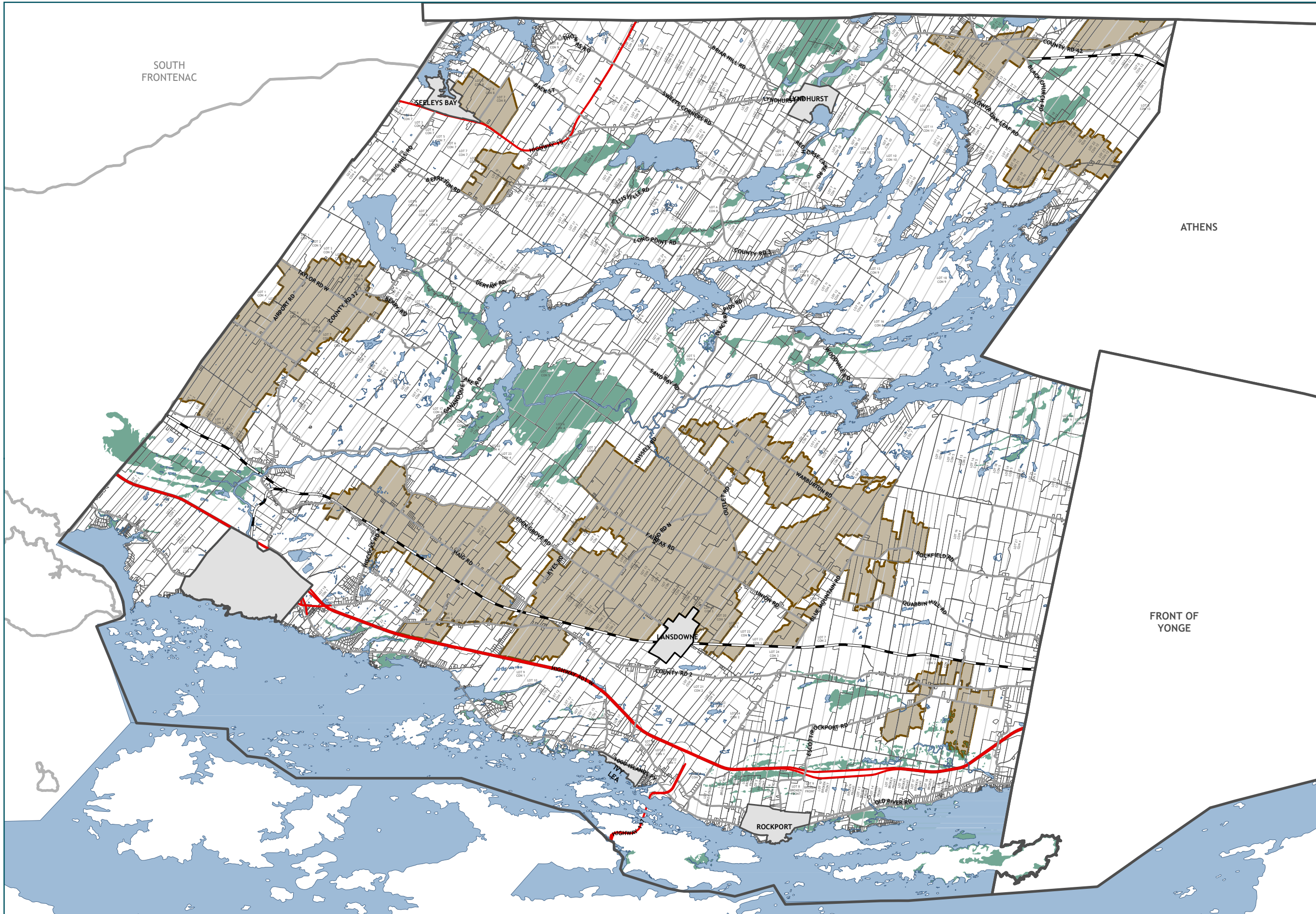


APPENDIX C7 - TOWNSHIP OF LEEDS and the THOUSAND ISLANDS - RECOMMENDED AGRICULTURAL AREA MAP



- RECOMMENDATION**
- Prime Agriculture
- NATURAL FEATURES**
- Provincially Significant Wetlands
 - Active/Abandoned Railway

The information displayed on this map has been compiled from various sources. While every effort has been made to accurately depict the information, this map should not be relied on as being a precise indicator of locations.

Copyright United Counties of Leeds and Grenville, 2024. All rights reserved.

May not be reproduced without permission. This is not survey data.

