

Supportive Housing Initiatives – Housing Department United Counties of Leeds & Grenville

Chris Morrison, Housing Manager
September 29, 2023

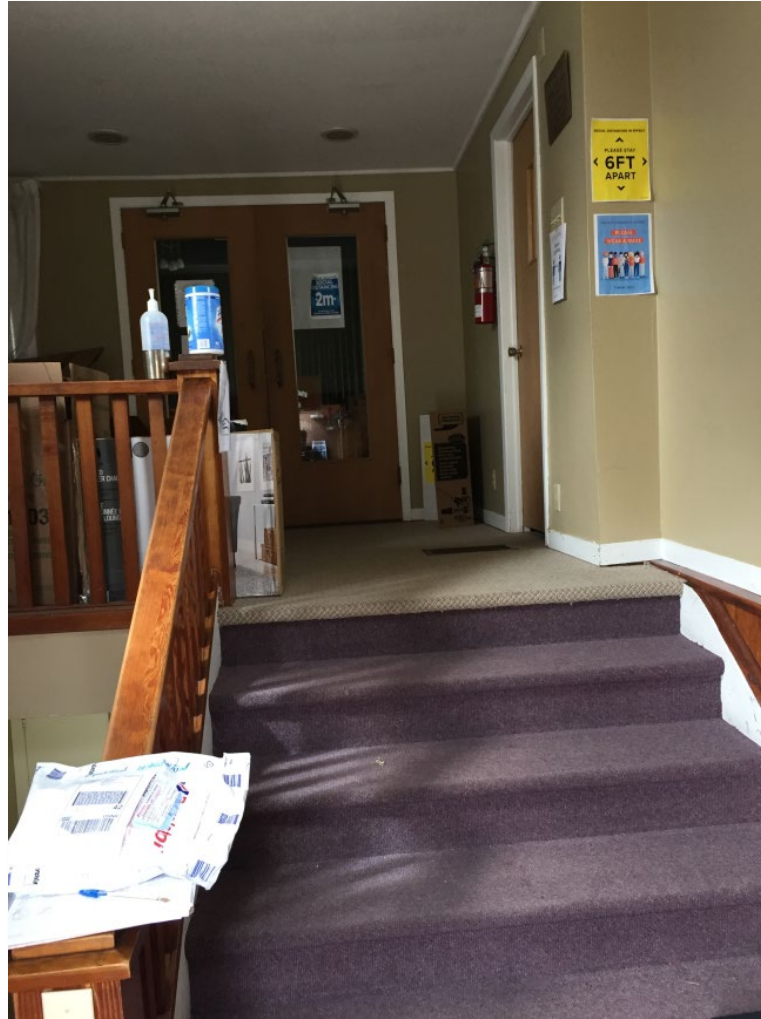
Pixie Place – Pre-Construction



Pixie Place – Pre-Construction



Pixie Place – Pre-Construction



Pixie Place – Pre-Construction



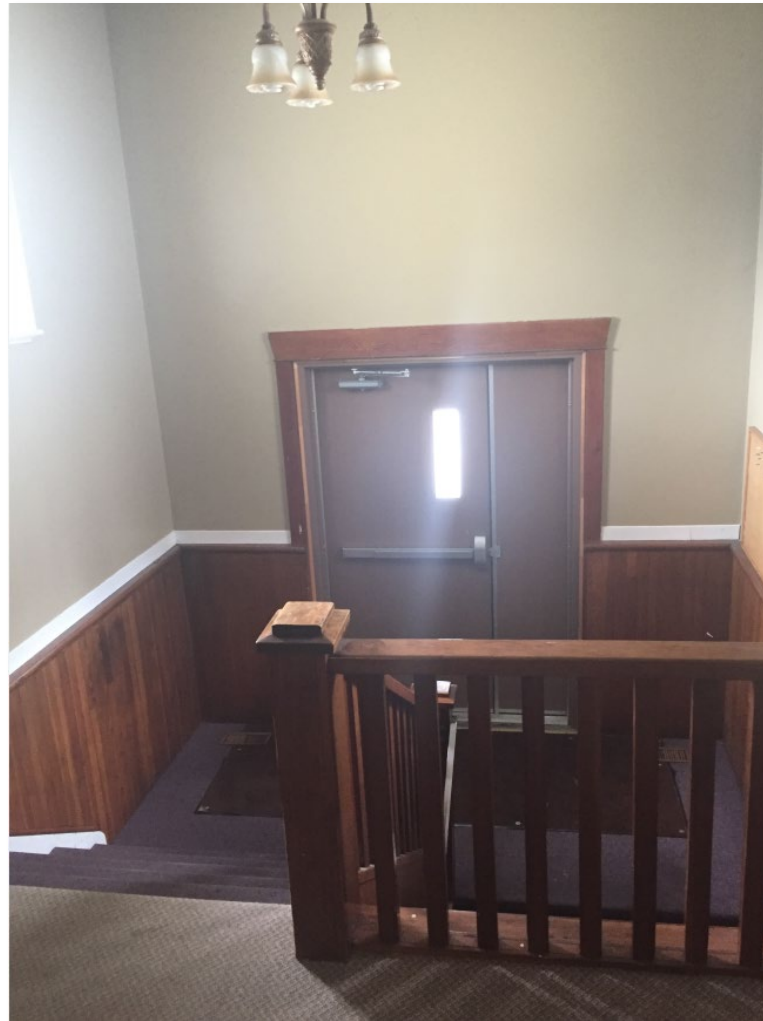
Pixie Place – Pre-Construction



Pixie Place – Pre-Construction



Pixie Place – Pre-Construction



Pixie Place – Post-Construction



Pixie Place – Post-Construction



Pixie Place – Post-Construction



Pixie Place – Post-Construction



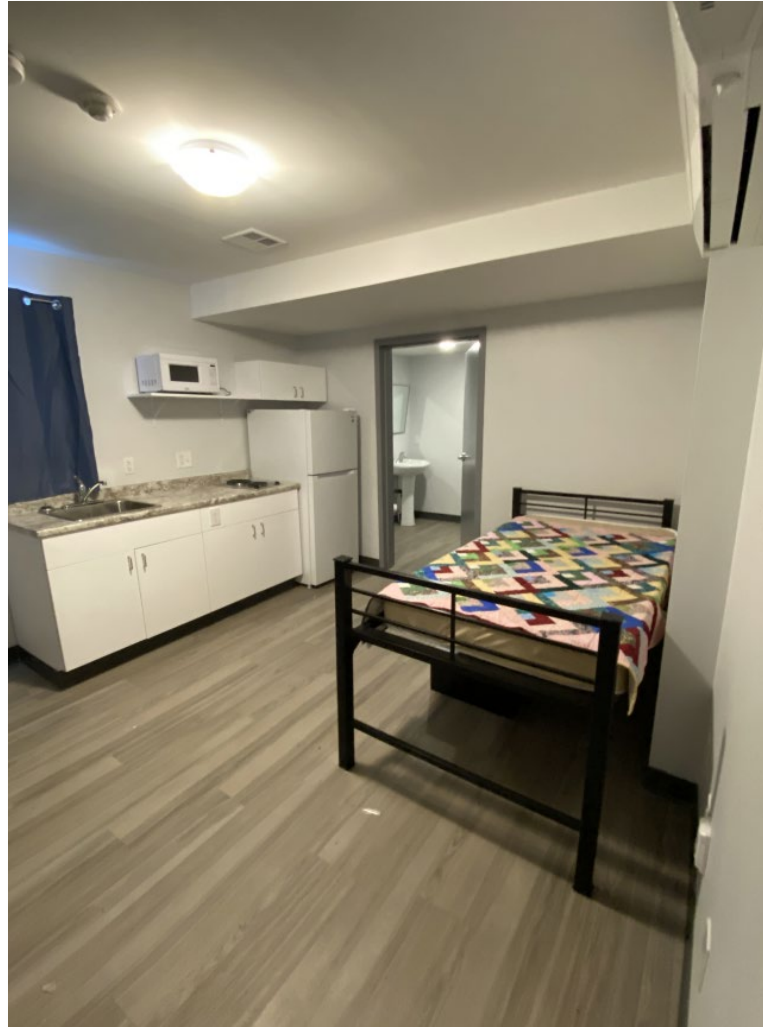
Pixie Place – Post-Construction



Pixie Place – Post-Construction



Pixie Place – Post-Construction



Pixie Place – Post-Construction



Court House - Pre-Construction



Court House - Pre-Construction



Court House – During Construction



Court House – During Construction



Court House – During Construction



Court House – During Construction



Court House – During Construction



Court House – During Construction



Court House – During Construction



Court House – During Construction



Post Construction – Court House



Pros / Cons

Pros

- Energy efficiency, lower operational costs
- Already part of the community
- Able to make it how you want

Cons

- Tied to footprint of building - limit of space – need to be creative
- Structural issues - older buildings - engineering costs
- Change purpose - need to meet new codes
- Abatement of designated substances

Take Aways

- The building is centrally close to amenities, and the units would integrate well into the neighbourhood
- The building is vacant, which is positive for the strict timelines of the program guidelines
- The current configuration within the building should facilitate straightforward conversion
- The current zoning in place supports the creation of the units
- Need partners, local municipal staff, ministry staff, community service provider partners

Questions?



Chris Morrison
Housing Manager
200-25 Central Avenue West
Brockville, ON K6V 4N6
613-342-3840 ext. 2328
Chris.morrison@uclg.on.ca