

## **Asbestos Building Materials Assessment**

Row Houses  
518, 550, 555, 563, and 574 Fort Town  
Drive, Prescott ON



Prepared for:  
United Counties of Leeds & Grenville  
100-25 Central Avenue West  
Brockville ON K6V 4N6

Prepared by:  
Stantec Consulting Ltd.  
400-1331 Clyde Avenue  
Ottawa ON K2C 3G4

Project No.: 122150275

February 17, 2017

## Table of Contents

<b>EXECUTIVE SUMMARY .....</b>	<b>ii</b>
<b>1.0 INTRODUCTION .....</b>	<b>1</b>
<b>2.0 SCOPE.....</b>	<b>1</b>
2.1 LIMITATIONS .....	2
2.1.1 Project-Specific Limitations .....	3
2.1.2 Information from Previous Reports .....	3
<b>3.0 REGULATORY FRAMEWORK .....</b>	<b>3</b>
<b>4.0 ASSESSMENT METHODOLOGY .....</b>	<b>4</b>
4.1 FACILITY DESCRIPTION .....	5
4.2 DOCUMENT REVIEW.....	5
<b>5.0 FINDINGS.....</b>	<b>5</b>
5.1 FRIABLE ASBESTOS-CONTAINING MATERIALS.....	5
5.2 NON-FRIABLE ASBESTOS-CONTAINING MATERIALS.....	6
5.3 PRESUMED ASBESTOS-CONTAINING MATERIALS .....	6
5.4 NON-ASBESTOS-CONTAINING MATERIALS .....	7
5.5 POTENTIAL FOR VERMICULITE INSULATION .....	7
<b>6.0 RECOMMENDATIONS.....</b>	<b>7</b>
<b>7.0 CLOSURE.....</b>	<b>8</b>

### LIST OF APPENDICES

<b>APPENDIX A</b>	<b>SUMMARY OF RESULTS FOR ANALYSIS OF BULK SAMPLES FOR ASBESTOS CONTENT</b>
<b>APPENDIX B</b>	<b>LABORATORY ANALYTICAL REPORTS – ASBESTOS: POLARIZED LIGHT MICROSCOPY</b>
<b>APPENDIX C</b>	<b>SUMMARY OF OCCURRENCES OF ASBESTOS-CONTAINING MATERIALS</b>
<b>APPENDIX D</b>	<b>SELECTED SITE PHOTOGRAPHS</b>

### Executive Summary

Stantec Consulting Ltd. (Stantec) was commissioned by the United Counties of Leeds & Grenville (Leeds Grenville) to conduct an Asbestos Building Materials Assessment of the row houses (subject buildings), located at:

- 518 Fort Town Drive, Prescott, Ontario;
- 550 Fort Town Drive, Prescott, Ontario;
- 555 Fort Town Drive, Prescott, Ontario;
- 563 Fort Town Drive, Prescott, Ontario; and,
- 574 Fort Town Drive, Prescott, Ontario.

The purpose of the assessment was to assist Leeds Grenville to meet the requirements of *Ontario Regulation 278/05 Designated Substance - Asbestos on Construction Projects and in Buildings and Repair Operations*, as amended (O. Reg. 278/05), made under the *Occupational Health and Safety Act (OHS)*. The assessment includes the identification of building materials suspected to be asbestos-containing materials (ACMs) that may require special attention during the operation of the building.

The assessment is intended for the long-term management of asbestos-containing building materials to be included as part of an overall Asbestos Management Program (AMP) and not for construction or renovation purposes. The conclusions presented herein represent the findings for a limited number of residential houses. Intrusive inspections and additional testing of suspect ACMs and presumed asbestos-containing materials (PACMs) may be required to complement the information provided in this report if any work activities are planned which may disturb ACMs and/or PACMs.

The work was carried out in accordance with the requirements of the OHS. The site work was conducted by Will Madden-Macavelia on January 11, 2017.

Based on the visual assessment and laboratory analysis, ACMs were identified to be present in the form of:

- Stucco – 518, 550, 565, 563 and 574 Fort Town Drive (friable); and,
- Drywall joint-fill compound – 518, 550, 565, 563 and 574 Fort Town Drive (non-friable).

Drywall joint-fill compound was observed to be in poor condition on the following locations:

- 555 Fort Town Drive main entrance wall (chipped, 3 sq. m) and washroom wall (water damage, 1 sq. m); and,
- 574 Fort Town Drive kitchen wall (chipped, <1 sq. m).

## ASBESTOS BUILDING MATERIALS ASSESSMENT

The remaining materials were observed to be in good condition. It should be noted that drywall joint-fill compound is considered non-friable in its undisturbed state but can release fibers when damaged.

The following building materials were observed to be present but not sampled, and are listed as PACMs:

- Mastic associated with 12"x12" vinyl floor tiles – beige with grey flecks (550 Fort Town Drive);
- Mastic associated with 12"x12" vinyl floor tiles – beige with dark beige streaks (563 Fort Town Drive);
- Mastic associated with 12"x12" vinyl floor tiles – white with black flecks (563 Fort Town Drive);
- Mastic associated with 12"x12" vinyl floor tiles – white with black flecks (574 Fort Town Drive);
- Interior window and door caulking – white (550 and 55 Fort Town Drive);
- Exterior window and door caulking – white (518, 550, 555, 563 and 574 Fort Town Drive); and,
- Brick mortar (518, 550, 555, 563 and 574 Fort Town Drive).

These materials were observed to be in good condition. These materials were not sampled to preserve their integrity. As these materials are known to have been manufactured with asbestos, they should be presumed to be asbestos-containing unless proven otherwise by laboratory analysis.

Similar materials are likely to present in the houses not assessed and these should be treated as ACMs or PACMs.

The statements made in this Executive Summary text are subject to the same limitations included in this report, and are to be read in conjunction with the remainder of this report.

Recommendations pertaining to the handling, removal, disposal and management of identified asbestos-containing materials are provided within this report.

# ASBESTOS BUILDING MATERIALS ASSESSMENT

February 17, 2017

## 1.0 INTRODUCTION

Stantec Consulting Ltd. (Stantec) was commissioned by the United Counties of Leeds & Grenville (Leeds Grenville) to conduct an Asbestos Building Materials Assessment of the houses (subject buildings), located at:

- 518 Fort Town Drive, Prescott, Ontario;
- 550 Fort Town Drive, Prescott, Ontario;
- 555 Fort Town Drive, Prescott, Ontario;
- 563 Fort Town Drive, Prescott, Ontario; and,
- 574 Fort Town Drive, Prescott, Ontario.

The purpose of the assessment was to assist the Leeds Grenville to meet the requirements of Ontario Regulation 278/05 Designated Substance - Asbestos on Construction Projects and in Buildings and Repair Operations, as amended (O. Reg. 278/05), made under the Occupational Health and Safety Act (OHSA). The assessment includes the identification of building materials suspected to be asbestos-containing materials (ACMs) that may require special attention during the operation of the building.

The assessment is intended for the long-term management of asbestos-containing building materials to be included as part of an overall Asbestos Management Program (AMP) and not for construction or renovation purposes. The conclusions presented herein represent the findings for a limited number of residential houses. Intrusive inspections and additional testing of suspect ACMs and presumed asbestos-containing materials (PACMs) may be required to complement the information provided in this report if any work activities are planned which may disturb ACMs and/or PACMs.

The work was carried out in accordance with the requirements of the OHSA. The site work was conducted by Will Madden-Macavelia on January 11, 2017.

## 2.0 SCOPE

The scope of work for this assessment involved the following:

- A review of existing information, including site drawings, previous assessment and/or abatement documentation and discussions with site personnel, where available;
- A visual assessment of readily accessible areas for the presence of asbestos-containing building materials. The assessment generally included common areas, mechanical rooms, and a representative number of residential units;
- The assessment generally included common areas, mechanical rooms, and a representative number of residential units;



# ASBESTOS BUILDING MATERIALS ASSESSMENT

February 17, 2017

- The collection of representative bulk samples from building materials suspected of containing asbestos fibres;
- Submission of samples collected for laboratory analysis; and,
- Evaluation and interpretation of field findings and laboratory analytical results to develop conclusions and recommendations pertaining to the management of ACMs and PACMs identified within the building.

## 2.1 LIMITATIONS

This report reflects the observations made within accessed areas and the results of analyses performed on specific materials sampled during the assessment. Analytical results reflect the sampled materials at the specific sample locations.

Concealed spaces were assessed via existing access panels, where present. Interior and exterior finishes, solid ceilings, walls, flooring and structural elements were not removed to access concealed areas. An inaccessible area, where ACMs may be present includes, but is not limited to: ceiling spaces, wall cavities, crawlspaces, and buried materials.

Due to limitations on the agreed to scope of work for this project as well as physical limitations in accessing concealed areas and limitations associated with working in occupied/operational spaces, there are specific limitations to the information that can be provided for each suspect ACM or PACM considered in this assessment. The presence and asbestos content of some building materials could not be confirmed.

Building materials that may contain asbestos but were not accessible for sampling include, but are not limited to the following:

- Roofing materials;
- Sub-grade materials (e.g., asbestos cement drainage pipe);
- Flooring material concealed beneath carpeting, ceramic tile, brickwork, hardwood flooring, and/or concealed beneath existing sub-floors;
- Insulation material present inside walls (e.g., suspected asbestos-containing vermiculite insulation inside concrete block and/or brick walls);
- Drywall and/or wall plaster and associated finish materials concealed behind new and/or additional walls;
- Woven tape inside duct connection joints;
- Mechanical (e.g., piping and ducting) insulation within wall cavities, crawlspaces tunnels or other concealed spaces;
- Window and door glazing compounds;
- Insulation materials inside fire doors;
- Window and door glazing compounds;
- Heating, ventilation and air conditioning (HVAC) units mechanical inner linings and/or inner ducting insulation; and,
- Heat protection materials inside mechanical installations and light fixtures.

## ASBESTOS BUILDING MATERIALS ASSESSMENT

February 17, 2017

### 2.1.1 Project-Specific Limitations

The areas included in this assessment were limited to the following:

- 518 Fort Town, living room, front entrance, kitchen, stairwell, bedrooms, washroom, and hallway);
- 555 Fort Town Drive
- 563 Fort Town Drive
- 574 Fort Town Drive
- Exterior of the above listed buildings.

The following areas were not accessed, for the reasons indicated:

- Roof (no access/weather conditions)

The roof, vinyl sheet flooring and vinyl floor tiles (12"x12" beige with beige flecks) were reported by Leeds Grenville to have been removed and replaced within with last three (3) years.

### 2.1.2 Information from Previous Reports

Stantec was not provided with previous reports for review.

## 3.0 REGULATORY FRAMEWORK

Asbestos is included in the *Ontario Regulation, 490/09 Designated Substances*, as amended (O. Reg. 490/09) made under Ontario's OHSA, which primarily regulates worker exposure to asbestos during manufacturing of asbestos-containing products, but also includes requirements related to respiratory equipment, measurement of airborne fibres, and medical surveillance of exposed workers.

Ontario Regulation 278/05 clearly defines ACM as a material that contains 0.5 per cent or more asbestos by dry weight. Additionally, the regulation requires that the "record" (i.e., the Asbestos Building Materials Assessment) be updated at least once in each 12 month period or whenever the owner of the facility becomes aware of new information relating to the suspect and confirmed ACMs.

The general waste management regulation for the province of Ontario is *R.R.O. 1990, Regulation 347 General - Waste Management*, as amended (R.R.O. 1990, 347), under the *Environmental Protection Act* (EPA) of Ontario, sets out the requirements for the proper disposal of asbestos waste in Ontario. The waste must be placed in a double sealed container, properly labeled, free of cuts, tears or punctures and disposed of at a licensed waste station which has been properly notified of the presence of asbestos waste.

February 17, 2017

### 4.0 ASSESSMENT METHODOLOGY

Asbestos-containing materials are grouped into two classifications, friable and non-friable materials. Friable ACMs are those that can easily be crumbled or broken apart by mere hand pressure. When these materials break apart asbestos fibres are then released into the atmosphere. Non-friable ACMs or "manufactured products" are materials that by the nature of their manufacturing/construction do not readily allow the release of asbestos fibres. These materials should not be cut or shaped with power tools, since this procedure may allow for the release of the asbestos fibres. Some non-friable materials such as plaster, drywall and ceiling tiles are considered to be non-friable in an undisturbed state, but can release fibers when damaged or disturbed.

It is Stantec's understanding that the subject building was constructed before 1990. This construction time period is consistent with those dates when asbestos-containing building materials were commonly used.

A visual assessment of accessible areas was undertaken in order to check for the presence of materials suspected of containing asbestos. Locations to collect discrete bulk asbestos samples of suspect building materials were identified. Samples of representative materials were then collected at these locations. An assessment of the condition and accessibility was completed for each occurrence of an ACM. The Public Works and Government Services Canada (PWGSC) document entitled *Deputy Ministers Directive 057 – Asbestos Management* (Last Revised June 16, 1999) was used as the basis for the criteria that was applied in evaluating the presence of ACMs and PACMs within the subject building, where applicable.

Samples of suspect ACMs from various building materials were collected and submitted to Paracel Laboratories Ltd. (Paracel) located in Ottawa, Ontario for analysis using Polarized Light Microscopy (PLM) with dispersion staining. The analysis was conducted following the U.S. EPA/600/R-93/116 Method. Paracel is certified under the National Voluntary Laboratory Accreditation Program (NVLAP) to perform asbestos analysis of bulk samples. Asbestos-containing materials are defined as a material that contains 0.5 per cent or more asbestos by dry weight.

A positive stop option was used. Multiple samples of visually similar material were collected and submitted for laboratory analysis. Once one sample within the set is identified to contain asbestos, further analysis of the subsequent samples is deemed to be unnecessary and not conducted.

# ASBESTOS BUILDING MATERIALS ASSESSMENT

February 17, 2017

## 4.1 FACILITY DESCRIPTION

The houses located at 518, 550, 555, 563 and 574 Fort Town Drive are up to four (4) bedroom, two (2) level building with a full basement. The reported construction date of the building is 1940. The typical structural components and finished associated with this building consist of brick exterior walls, various types of flooring including cement, vinyl floor tile, and vinyl sheet flooring, and interior concrete block and drywall walls with drywall and stucco ceilings.

## 4.2 DOCUMENT REVIEW

Stantec was not provided with previous reports for review.

## 5.0 FINDINGS

A summary list of the bulk samples collected by Stantec, including a description of the material, sampling location, type of analysis and laboratory test results is provided in **Appendix A**. A copy of the PLM Laboratory Certificates of Analysis for bulk samples collected is provided in **Appendix B**.

A summary of occurrences of ACMs and/or PACMs is provided in **Appendix C**. Each ACM occurrence includes the following information:

- Room component that contains ACM;
- Location of the ACM within the room space;
- ACM description;
- Estimated quantity;
- Original sample number or representative sample number;
- Friability;
- Condition; and,
- Comments regarding recommended actions.

Selected site photographs are provided in **Appendix D**.

### 5.1 FRIABLE ASBESTOS-CONTAINING MATERIALS

Friable building materials were observed to be present and identified by laboratory analysis to be asbestos-containing in the form of:

- Stucco – 518, 550, 565, 563 and 574 Fort Town Drive.

This material was observed to be in good condition.

## ASBESTOS BUILDING MATERIALS ASSESSMENT

February 17, 2017

### 5.2 NON-FRIABLE ASBESTOS-CONTAINING MATERIALS

Non-friable building materials were observed to be present and identified by laboratory analysis to be asbestos-containing in the form of:

- Drywall joint-fill compound – 518, 550, 565, 563 and 574 Fort Town Drive.

This material was observed to be in poor condition in the following locations:

- 555 Fort Town Drive main entrance wall (chipped, (3 sq. m) and washroom wall (water damage, 1 sq. m); and,
- 574 Fort Town Drive kitchen wall (chipped, <1 sq. m).

It should be noted that drywall joint-fill compound is considered non-friable in its undisturbed state but can release fibers when damaged. The remaining materials are observed to be in good condition.

Similar asbestos-containing materials are likely to be present in units not assessed and should be treated as asbestos-containing materials. Materials not sampled should be presumed to be asbestos-containing.

### 5.3 PRESUMED ASBESTOS-CONTAINING MATERIALS

The following building materials were observed to be present but not sampled, and are listed as PACMs:

- Mastic associated with 12"x12" vinyl floor tiles – beige with grey flecks (550 Fort Town Drive);
- Mastic associated with 12"x12" vinyl floor tiles – beige with dark beige streaks (563 Fort Town Drive);
- Mastic associated with 12"x12" vinyl floor tiles – white with black flecks (563 Fort Town Drive);
- Mastic associated with 12"x12" vinyl floor tiles – white with black flecks (574 Fort Town Drive);
- Interior window and door caulking – white (550 and 55 Fort Town Drive);
- Exterior window and door caulking – white (518, 550, 555, 563 and 574 Fort Town Drive); and,
- Brick mortar (518, 550, 555, 563 and 574 Fort Town Drive).

These materials were observed to be in good condition. These materials were not sampled to preserve their integrity. As these materials are known to have been manufactured with asbestos, they should be presumed to be asbestos-containing unless proven otherwise by laboratory analysis.

February 17, 2017

### 5.4 NON-ASBESTOS-CONTAINING MATERIALS

It should be noted that the roof, vinyl sheet flooring and vinyl floor tiles (12"x12" beige with beige flecks) were reported by Leeds Grenville to have been removed and replaced within with last three (3) years.

A summary list of the bulk samples collected during this assessment and confirmed to be non-ACMs by laboratory analysis is provided in **Appendix A**.

### 5.5 POTENTIAL FOR VERMICULITE INSULATION

Various walls of the subject facility were comprised of masonry (concrete) blocks. Asbestos-contaminated vermiculite was historically used as insulating material in masonry block or brick walls. To assess for this potential ACM, destructive sampling is required, which was not conducted as part of this assessment. Although various holes, breaches and cracks were observed and no vermiculite was present, the presence of this potential ACM cannot be ruled out without destructive testing.

## 6.0 RECOMMENDATIONS

Stantec recommends the following with regards to meeting the requirements of O. Reg. 278/05:

- Damaged asbestos-containing drywall joint-fill compound should be repaired following Type 1 abatement procedures;
- Asbestos-containing materials that may be impacted during renovation and/or demolition activities should be removed prior to the renovation and/or demolition activities;
- Prior to renovation and/or demolition activities that would disturb them, undertake testing of PACMs that may be impacted to determine their asbestos content. Confirmed asbestos materials should be handled accordingly;
- Should a material suspected to contain asbestos fibres become uncovered during renovation and/or demolition activities, all work in the areas that may disturb the material should be stopped. Samples of the suspect material should be submitted for laboratory analysis to determine if asbestos fibres are present. Confirmed asbestos materials should be handled accordingly;
- If masonry block walls are to be impacted by renovation and/or demolition work, and these walls have not been checked for the presence of vermiculite insulation, intrusive assessments for vermiculite should be undertaken prior to planned renovation and/or demolition work. If vermiculite insulation is suspected to be present, this material should be treated as an ACM until testing can show otherwise; and,
- This report should be added to the Asbestos Management Program and referred to as the current asbestos record.

February 17, 2017

### 7.0 CLOSURE

This report has been prepared for the sole benefit of United Counties of Leeds & Grenville. The report may not be used or relied upon by any other person or entity without the express written consent of Stantec Consulting Ltd. and United Counties of Leeds & Grenville.

Any uses that a third party makes of this report, or any reliance on decisions based on it, are the responsibility of such third parties. Stantec Consulting Ltd. accepts no responsibility for damages, if any, suffered by any third party as a result of decisions made or actions based on this report.

The information and conclusions contained in this report are based upon work undertaken by trained professional and technical staff in accordance with generally accepted engineering and scientific practices current at the time the work was performed. Conclusions presented in this report should not be construed as legal advice.

The conclusions presented in this report represent the best technical judgment of Stantec Consulting Ltd. based on the data obtained from the work. The conclusions are based on the site conditions encountered by Stantec Consulting Ltd. at the time the work was performed at the specific assessment and/or sampling locations, and can only be extrapolated to an undefined limited area around these locations. The extent of the limited area depends on building construction and conditions, weather, building usage and other factors. Due to the nature of the investigation and the limited data available, Stantec Consulting Ltd. cannot warrant against undiscovered environmental liabilities.

If any conditions become apparent that differ significantly from our understanding of conditions as presented in this report, we request that we be notified immediately to reassess the conclusions provided herein.

We trust that the above is satisfactory for your purposes at this time. Should you have any questions or concerns, or require additional information, please do not hesitate to contact the undersigned at your convenience.

**ASBESTOS BUILDING MATERIALS ASSESSMENT**

February 17, 2017

This report was prepared by Victoria Pereira and reviewed by Linda Fleet and Martin Ling.

Regards,

**STANTEC CONSULTING LTD.**



Linda Fleet  
Project Manager  
Phone: (905) 415-6368  
Fax: (905) 474-9889  
linda.fleet@stantec.com



Martin Ling  
Senior Reviewer  
Phone: (905) 415-6386  
Fax: (905) 474-9889  
martin.ling@stantec.com



Nicole Flanagan, M.A.Sc., P.Eng.  
Associate  
Phone: (613) 738-6086  
Fax: (613) 722-2799  
nicole.flanagan@stantec.com

VP/LF/ML/aek

\\Cd1215-f01\work\_group\01221\active\122150275\Reports\518, 550, 555, 563, 574 Fort Town Drive  
Prescott\122150275\_rpt\_vp\_2017Feb17\_UCLG\_FortTownDrHouses\_Prescott.docx

## **ASBESTOS BUILDING MATERIALS ASSESSMENT**

Appendix A  
Summary of Results for Analysis of  
Bulk Samples for Asbestos Content  
February 17, 2017

# Appendix A

## **Summary of Results for Analysis of Bulk Samples for Asbestos Content**

## Summary of Bulk Sample Analysis for Asbestos Type and Content

Sample Number	Sampling Location	Description of Sampled Material	Asbestos Type and Content	Analysis
518-BS-01A	Second Floor - Hallway Wall	Drywall Joint-Fill Compound	1% Chrysotile	PLM
518-BS-01B	Second Floor - North Bedroom Wall	Drywall Joint-Fill Compound	Positive Stop Not Analyzed	PLM
518-BS-01C	Second Floor - Hallway Wall	Drywall Joint-Fill Compound	Positive Stop Not Analyzed	PLM
518-BS-01D	First Floor - Hallway Wall	Drywall Joint-Fill Compound	Positive Stop Not Analyzed	PLM
518-BS-01E	First Floor - Hallway Wall	Drywall Joint-Fill Compound	Positive Stop Not Analyzed	PLM
518-BS-01F	First Floor - Hallway Wall	Drywall Joint-Fill Compound	Positive Stop Not Analyzed	PLM
518-BS-01G	First Floor - Hallway Wall	Drywall Joint-Fill Compound	Positive Stop Not Analyzed	PLM
518-BS-02A	First Floor - Hallway	Stucco Ceiling	1% Chrysotile	PLM
518-BS-02B	Second Floor - Hallway	Stucco Ceiling	Positive Stop Not Analyzed	PLM
518-BS-02C	Second Floor - Hallway	Stucco Ceiling	Positive Stop Not Analyzed	PLM
518-BS-02D	Second Floor - East Bedroom	Stucco Ceiling	Positive Stop Not Analyzed	PLM
518-BS-02E	Second Floor - South Bedroom	Stucco Ceiling	Positive Stop Not Analyzed	PLM
550-BS-01A	Second Floor - Hallway Wall	Drywall Joint-Fill Compound	1% Chrysotile	PLM
550-BS-01B	Second Floor - Hallway Wall	Drywall Joint-Fill Compound	Positive Stop Not Analyzed	PLM
550-BS-01C	Basement Stairwell	Drywall Joint-Fill Compound	Positive Stop Not Analyzed	PLM
550-BS-01D	First Floor - Kitchen Storage Wall	Drywall Joint-Fill Compound	Positive Stop Not Analyzed	PLM
550-BS-01E	First Floor - Kitchen Wall	Drywall Joint-Fill Compound	Positive Stop Not Analyzed	PLM

## Summary of Bulk Sample Analysis for Asbestos Type and Content

Sample Number	Sampling Location	Description of Sampled Material	Asbestos Type and Content	Analysis
550-BS-01F	First Floor - Main Entrance Wall	Drywall Joint-Fill Compound	Positive Stop Not Analyzed	PLM
550-BS-01G	First Floor - Hallway Wall	Drywall Joint-Fill Compound	Positive Stop Not Analyzed	PLM
550-BS-02A	First Floor - Hallway	Stucco Ceiling	1% Chrysotile	PLM
550-BS-02B	First Floor - Hallway	Stucco Ceiling	Positive Stop Not Analyzed	PLM
550-BS-02C	Second Floor - Hallway	Stucco Ceiling	Positive Stop Not Analyzed	PLM
550-BS-02D	Second Floor - Hallway	Stucco Ceiling	Positive Stop Not Analyzed	PLM
550-BS-02E	Second Floor - Hallway	Stucco Ceiling	Positive Stop Not Analyzed	PLM
550-BS-03A	First Floor - Kitchen	12"x12" Vinyl Floor Tile - Beige with Grey Flecks	None Detected	PLM
550-BS-03B	First Floor - Kitchen	12"x12" Vinyl Floor Tile - Beige with Grey Flecks	None Detected	PLM
550-BS-03C	First Floor - Kitchen	12"x12" Vinyl Floor Tile - Beige with Grey Flecks	None Detected	PLM
550-BS-04A	First Floor - Main Entrance	Vinyl Sheet Flooring - Grey Mosaic Pattern	None Detected	PLM
550-BS-04B	First Floor - Main Entrance	Vinyl Sheet Flooring - Grey Mosaic Pattern	None Detected	PLM
550-BS-04C	First Floor - Main Entrance	Vinyl Sheet Flooring - Grey Mosaic Pattern	None Detected	PLM
555-BS-01A	First Floor - Hallway Wall	Drywall Joint-Fill Compound	1% Chrysotile	PLM
555-BS-01B	First Floor - Hallway Wall	Drywall Joint-Fill Compound	Positive Stop Not Analyzed	PLM
555-BS-01C	First Floor - Hallway Wall	Drywall Joint-Fill Compound	Positive Stop Not Analyzed	PLM
555-BS-01D	First Floor - Kitchen Wall	Drywall Joint-Fill Compound	Positive Stop Not Analyzed	PLM

## Summary of Bulk Sample Analysis for Asbestos Type and Content

Sample Number	Sampling Location	Description of Sampled Material	Asbestos Type and Content	Analysis
555-BS-01E	First Floor - Kitchen Wall	Drywall Joint-Fill Compound	Positive Stop Not Analyzed	PLM
555-BS-01F	Second Floor - Washroom Wall	Drywall Joint-Fill Compound	Positive Stop Not Analyzed	PLM
555-BS-01G	Second Floor - Hallway Wall	Drywall Joint-Fill Compound	Positive Stop Not Analyzed	PLM
555-BS-02A	Second Floor - Hallway	Stucco Ceiling	2% Chrysotile	PLM
555-BS-02B	Second Floor - Hallway	Stucco Ceiling	Positive Stop Not Analyzed	PLM
555-BS-02C	Second Floor - Hallway	Stucco Ceiling	Positive Stop Not Analyzed	PLM
555-BS-02D	First Floor - Main Entrance/Hallway	Stucco Ceiling	Positive Stop Not Analyzed	PLM
555-BS-02E	First Floor - Main Entrance/Hallway	Stucco Ceiling	Positive Stop Not Analyzed	PLM
563-BS-01A	Second Floor - Hallway Wall	Drywall Joint-Fill Compound	1% Chrysotile	PLM
563-BS-01B	Second Floor - Hallway Wall	Drywall Joint-Fill Compound	Positive Stop Not Analyzed	PLM
563-BS-01C	Second Floor - Hallway Wall	Drywall Joint-Fill Compound	Positive Stop Not Analyzed	PLM
563-BS-01D	First Floor - Kitchen Wall	Drywall Joint-Fill Compound	Positive Stop Not Analyzed	PLM
563-BS-01E	First Floor - Kitchen Wall	Drywall Joint-Fill Compound	Positive Stop Not Analyzed	PLM
563-BS-01F	Basement Stairwell Wall	Drywall Joint-Fill Compound	Positive Stop Not Analyzed	PLM
563-BS-01G	Basement Stairwell Wall	Drywall Joint-Fill Compound	Positive Stop Not Analyzed	PLM
563-BS-02A	First Floor - Hallway	Stucco Ceiling	1% Chrysotile	PLM
563-BS-02B	First Floor - Hallway	Stucco Ceiling	Positive Stop Not Analyzed	PLM

## Summary of Bulk Sample Analysis for Asbestos Type and Content

Sample Number	Sampling Location	Description of Sampled Material	Asbestos Type and Content	Analysis
563-BS-02C	Second Floor - Hallway	Stucco Ceiling	Positive Stop Not Analyzed	PLM
563-BS-02D	Second Floor - Hallway	Stucco Ceiling	Positive Stop Not Analyzed	PLM
563-BS-02E	Second Floor - Hallway	Stucco Ceiling	Positive Stop Not Analyzed	PLM
563-BS-03A	First Floor - Hallway	12"x12" Vinyl Floor Tile - White with Black Flecks	None Detected	PLM
563-BS-03B	First Floor - Hallway	12"x12" Vinyl Floor Tile - White with Black Flecks	None Detected	PLM
563-BS-03C	First Floor - Kitchen	12"x12" Vinyl Floor Tile - White with Black Flecks	None Detected	PLM
563-BS-04A	Second Floor - Hallway	12"x12" Vinyl Floor Tile - Beige with Dark Beige Streaks	None Detected	PLM
563-BS-04B	Second Floor - Hallway	12"x12" Vinyl Floor Tile - Beige with Dark Beige Streaks	None Detected	PLM
563-BS-04C	Second Floor - Hallway	12"x12" Vinyl Floor Tile - Beige with Dark Beige Streaks	None Detected	PLM
574-BS-01A	First Floor - Kitchen Wall	Drywall Joint-Fill Compound	2% Chrysotile	PLM
574-BS-01B	First Floor - Kitchen Wall	Drywall Joint-Fill Compound	Positive Stop Not Analyzed	PLM
574-BS-01C	First Floor - Entrance Wall	Drywall Joint-Fill Compound	Positive Stop Not Analyzed	PLM
574-BS-01D	First Floor - Entrance Wall	Drywall Joint-Fill Compound	Positive Stop Not Analyzed	PLM
574-BS-01E	Basement Stairwell Wall	Drywall Joint-Fill Compound	Positive Stop Not Analyzed	PLM
574-BS-01F	Basement Stairwell Wall	Drywall Joint-Fill Compound	Positive Stop Not Analyzed	PLM
574-BS-01G	Second Floor - Hallway Wall	Drywall Joint-Fill Compound	Positive Stop Not Analyzed	PLM
574-BS-02A	Second Floor - Hallway	Stucco Ceiling	1% Chrysotile	PLM

## Summary of Bulk Sample Analysis for Asbestos Type and Content

Sample Number	Sampling Location	Description of Sampled Material	Asbestos Type and Content	Analysis
574-BS-02B	Second Floor - Hallway	Stucco Ceiling	Positive Stop Not Analyzed	PLM
574-BS-02C	Second Floor - Hallway	Stucco Ceiling	Positive Stop Not Analyzed	PLM
574-BS-02D	Second Floor - Hallway	Stucco Ceiling	Positive Stop Not Analyzed	PLM
574-BS-02E	Second Floor - Hallway	Stucco Ceiling	Positive Stop Not Analyzed	PLM
574-BS-03A	First Floor - Living Room	12"x12" Vinyl Floor Tile - White with Black Flecks	None Detected	PLM
574-BS-03B	First Floor - Living Room	12"x12" Vinyl Floor Tile - White with Black Flecks	None Detected	PLM
574-BS-03C	First Floor - Living Room	12"x12" Vinyl Floor Tile - White with Black Flecks	None Detected	PLM
574-BS-04A-FLOOR TILE	Second Floor - Hallway	12"x12" Vinyl Floor Tile - Beige with Dark Beige Streaks	None Detected	PLM
574-BS-04A-MASTIC	Second Floor - Hallway	12"x12" Vinyl Floor Tile - Beige with Dark Beige Streaks	None Detected	PLM
574-BS-04B-FLOOR TILE	Second Floor - Hallway	12"x12" Vinyl Floor Tile - Beige with Dark Beige Streaks	None Detected	PLM
574-BS-04B-MASTIC	Second Floor - Hallway	12"x12" Vinyl Floor Tile - Beige with Dark Beige Streaks	None Detected	PLM
574-BS-04C-FLOOR TILE	Second Floor - Hallway	12"x12" Vinyl Floor Tile - Beige with Dark Beige Streaks	None Detected	PLM
574-BS-04C-MASTIC	Second Floor - Hallway	12"x12" Vinyl Floor Tile - Beige with Dark Beige Streaks	None Detected	PLM

## **ASBESTOS BUILDING MATERIALS ASSESSMENT**

Appendix B  
Laboratory Analytical Reports – Asbestos: Polarized Light Microscopy  
February 17, 2017

# Appendix B **Laboratory Analytical Reports – Asbestos: Polarized Light Microscopy**

## Certificate of Analysis

### Stantec Consulting Ltd. (Ottawa)

300-675 Cochrane Dr West Tower  
Markham, ON L3R 0B8  
Attn: Linda Fleet

Client PO: 122150275

Project: 122150275- 518, 550, 555, 563 + 574 Fort Town Dr.

Custody:

Report Date: 20-Jan-2017

Order Date: 16-Jan-2017

This Certificate of Analysis contains analytical data applicable to the following samples as submitted:

Paracel ID	Client ID
1703124-01	518-BS-01A
1703124-02	518-BS-01B
1703124-03	518-BS-01C
1703124-04	518-BS-01D
1703124-05	518-BS-01E
1703124-06	518-BS-01F
1703124-07	518-BS-01G
1703124-08	518-BS-02A
1703124-09	518-BS-02B
1703124-10	518-BS-02C
1703124-11	518-BS-02D
1703124-12	518-BS-02E
1703124-13	550-BS-01A
1703124-14	550-BS-01B
1703124-15	550-BS-01C
1703124-16	550-BS-01D
1703124-17	550-BS-01E
1703124-18	550-BS-01F
1703124-19	550-BS-01G
1703124-20	550-BS-02A
1703124-21	550-BS-02B
1703124-22	550-BS-02C
1703124-23	550-BS-02D
1703124-24	550-BS-02E
1703124-25	550-BS-03A (Tile)
1703124-26	550-BS-03B (Tile)

Approved By:



Emma Diaz

Senior Analyst

Any use of these results implies your agreement that our total liability in connection with this work, however arising, shall be limited to the amount paid by you for this work, and that our employees or agents shall not under any circumstances be liable to you in connection with this work.

Certificate of Analysis

Client: **Stantec Consulting Ltd. (Ottawa)**

Client PO: **122150275**

Report Date: 20-Jan-2017

Order Date: 16-Jan-2017

Project Description: **122150275- 518, 550, 555, 563 + 574 Fort Town Dr.**

1703124-27	550-BS-03C (Tile)
1703124-28	550-BS-04A
1703124-29	550-BS-04B
1703124-30	550-BS-04C
1703124-31	555-BS-01A
1703124-32	555-BS-01B
1703124-33	555-BS-01C
1703124-34	555-BS-01D
1703124-35	555-BS-01E
1703124-36	555-BS-01F
1703124-37	555-BS-01G
1703124-38	555-BS-02A
1703124-39	555-BS-02B
1703124-40	555-BS-02C
1703124-41	555-BS-02D
1703124-42	555-BS-02E
1703124-43	563-BS-01A
1703124-44	563-BS-01B
1703124-45	563-BS-01C
1703124-46	563-BS-01D
1703124-47	563-BS-01E
1703124-48	563-BS-01F
1703124-49	563-BS-01G
1703124-50	563-BS-02A
1703124-51	563-BS-02B
1703124-52	563-BS-02C
1703124-53	563-BS-02D
1703124-54	563-BS-02E
1703124-55	563-BS-03A (Tile)
1703124-56	563-BS-03B (Tile)
1703124-57	563-BS-03C (Tile)
1703124-58	563-BS-04A (Tile)
1703124-59	563-BS-04B (Tile)
1703124-60	563-BS-04C (Tile)
1703124-61	574-BS-01A
1703124-62	574-BS-01B
1703124-63	574-BS-01C
1703124-64	574-BS-01D
1703124-65	574-BS-01E
1703124-66	574-BS-01F
1703124-67	574-BS-01G
1703124-68	574-BS-02A
1703124-69	574-BS-02B
1703124-70	574-BS-02C

Certificate of Analysis

Report Date: 20-Jan-2017

Client: **Stantec Consulting Ltd. (Ottawa)**

Order Date: 16-Jan-2017

Client PO: **122150275**

Project Description: **122150275- 518, 550, 555, 563 + 574 Fort Town Dr.**

---

1703124-71	574-BS-02D
1703124-72	574-BS-02E
1703124-73	574-BS-03A (Tile)
1703124-74	574-BS-03B (Tile)
1703124-75	574-BS-03C (Tile)
1703124-76	574-BS-04A (Tile)
1703124-77	574-BS-04B (Tile)
1703124-78	574-BS-04C (Tile)
1703124-79	574-BS-04A (Mastic)
1703124-80	574-BS-04B (Mastic)
1703124-81	574-BS-04C (Mastic)

Certificate of Analysis  
 Client: **Stantec Consulting Ltd. (Ottawa)**  
 Client PO: **122150275**

Report Date: 20-Jan-2017  
 Order Date: 16-Jan-2017

Project Description: **122150275- 518, 550, 555, 563 + 574 Fort Town Dr.**

**Asbestos, PLM Visual Estimation    \*\*MDL - 0.5%\*\***

<i>Paracel I.D.</i>	<i>Sample Date</i>	<i>Layers Analyzed</i>	<i>Colour</i>	<i>Description</i>	<i>Asbestos Detected:</i>	<i>Material Identification</i>	<i>% Content</i>
1703124-01	13-Jan-17	sample homogenized	Grey	Drywall Joint Compound	Yes	Client ID: 518-BS-01A <b>Chrysotile</b>	1
						Non-Fibers	99
1703124-02	13-Jan-17					Client ID: 518-BS-01B not analyzed	
1703124-03	13-Jan-17					Client ID: 518-BS-01C not analyzed	
1703124-04	13-Jan-17					Client ID: 518-BS-01D not analyzed	
1703124-05	13-Jan-17					Client ID: 518-BS-01E not analyzed	
1703124-06	13-Jan-17					Client ID: 518-BS-01F not analyzed	
1703124-07	13-Jan-17					Client ID: 518-BS-01G not analyzed	
1703124-08	13-Jan-17	sample homogenized	Beige	Stucco	Yes	Client ID: 518-BS-02A <b>Chrysotile</b>	1
						Non-Fibers	99
1703124-09	13-Jan-17					Client ID: 518-BS-02B not analyzed	
1703124-10	13-Jan-17					Client ID: 518-BS-02C not analyzed	
1703124-11	13-Jan-17					Client ID: 518-BS-02D not analyzed	
1703124-12	13-Jan-17					Client ID: 518-BS-02E not analyzed	
1703124-13	13-Jan-17	sample homogenized	Beige	Drywall Joint Compound	Yes	Client ID: 550-BS-01A <b>Chrysotile</b>	1
						Non-Fibers	99
1703124-14	13-Jan-17					Client ID: 550-BS-01B not analyzed	
1703124-15	13-Jan-17					Client ID: 550-BS-01C not analyzed	
1703124-16	13-Jan-17					Client ID: 550-BS-01D not analyzed	

Certificate of Analysis

Report Date: 20-Jan-2017

Client: Stantec Consulting Ltd. (Ottawa)

Order Date: 16-Jan-2017

Client PO: 122150275

Project Description: 122150275- 518, 550, 555, 563 + 574 Fort Town Dr.

**Asbestos, PLM Visual Estimation \*\*MDL - 0.5%\*\***

Paracel I.D.	Sample Date	Layers Analyzed	Colour	Description	Asbestos Detected:	Material Identification	% Content
1703124-17	13-Jan-17					Client ID: 550-BS-01E not analyzed	
1703124-18	13-Jan-17					Client ID: 550-BS-01F not analyzed	
1703124-19	13-Jan-17					Client ID: 550-BS-01G not analyzed	
1703124-20	13-Jan-17	sample homogenized	Beige	Stucco	Yes	Client ID: 550-BS-02A <b>Chrysotile</b> Non-Fibers	1 99
1703124-21	13-Jan-17					Client ID: 550-BS-02B not analyzed	
1703124-22	13-Jan-17					Client ID: 550-BS-02C not analyzed	
1703124-23	13-Jan-17					Client ID: 550-BS-02D not analyzed	
1703124-24	13-Jan-17					Client ID: 550-BS-02E not analyzed	
1703124-25	13-Jan-17	sample homogenized	Grey	Floor Tile	No	Client ID: 550-BS-03A (Tile) Non-Fibers	[AS-PRE] 100
1703124-26	13-Jan-17	sample homogenized	Grey	Floor Tile	No	Client ID: 550-BS-03B (Tile) Non-Fibers	[AS-PRE] 100
1703124-27	13-Jan-17	sample homogenized	Grey	Floor Tile	No	Client ID: 550-BS-03C (Tile) Non-Fibers	[AS-PRE] 100
1703124-28	13-Jan-17	sample homogenized	Grey	Sheet Vinyl Flooring	No	Client ID: 550-BS-04A Cellulose MMVF Non-Fibers	[AS-PRE] 10 5 85
1703124-29	13-Jan-17	sample homogenized	Grey	Sheet Vinyl Flooring	No	Client ID: 550-BS-04B Cellulose MMVF Non-Fibers	[AS-PRE] 10 5 85
1703124-30	13-Jan-17	sample homogenized	Grey	Sheet Vinyl Flooring	No	Client ID: 550-BS-04C Cellulose MMVF Non-Fibers	[AS-PRE] 10 5 85

Certificate of Analysis  
 Client: **Stantec Consulting Ltd. (Ottawa)**  
 Client PO: **122150275**

Report Date: 20-Jan-2017  
 Order Date: 16-Jan-2017

Project Description: **122150275- 518, 550, 555, 563 + 574 Fort Town Dr.**

**Asbestos, PLM Visual Estimation    \*\*MDL - 0.5%\*\***

<i>Paracel I.D.</i>	<i>Sample Date</i>	<i>Layers Analyzed</i>	<i>Colour</i>	<i>Description</i>	<i>Asbestos Detected:</i>	<i>Material Identification</i>	<i>% Content</i>
1703124-31	13-Jan-17	sample homogenized	Grey	Drywall Joint Compound	Yes	Client ID: 555-BS-01A <b>Chrysotile</b> Non-Fibers	1 99
1703124-32	13-Jan-17					Client ID: 555-BS-01B not analyzed	
1703124-33	13-Jan-17					Client ID: 555-BS-01C not analyzed	
1703124-34	13-Jan-17					Client ID: 555-BS-01D not analyzed	
1703124-35	13-Jan-17					Client ID: 555-BS-01E not analyzed	
1703124-36	13-Jan-17					Client ID: 555-BS-01F not analyzed	
1703124-37	13-Jan-17					Client ID: 555-BS-01G not analyzed	
1703124-38	13-Jan-17	sample homogenized	Beige	Stucco	Yes	Client ID: 555-BS-02A <b>Chrysotile</b> Non-Fibers	2 98
1703124-39	13-Jan-17					Client ID: 555-BS-02B not analyzed	
1703124-40	13-Jan-17					Client ID: 555-BS-02C not analyzed	
1703124-41	13-Jan-17					Client ID: 555-BS-02D not analyzed	
1703124-42	13-Jan-17					Client ID: 555-BS-02E not analyzed	
1703124-43	13-Jan-17	sample homogenized	Grey	Drywall Joint Compound	Yes	Client ID: 563-BS-01A <b>Chrysotile</b> Non-Fibers	1 99
1703124-44	13-Jan-17					Client ID: 563-BS-01B not analyzed	
1703124-45	13-Jan-17					Client ID: 563-BS-01C not analyzed	
1703124-46	13-Jan-17					Client ID: 563-BS-01D not analyzed	

Certificate of Analysis

Report Date: 20-Jan-2017

Client: Stantec Consulting Ltd. (Ottawa)

Order Date: 16-Jan-2017

Client PO: 122150275

Project Description: 122150275- 518, 550, 555, 563 + 574 Fort Town Dr.

**Asbestos, PLM Visual Estimation \*\*MDL - 0.5%\*\***

Paracel I.D.	Sample Date	Layers Analyzed	Colour	Description	Asbestos Detected:	Material Identification	% Content
1703124-47	13-Jan-17					Client ID: 563-BS-01E not analyzed	
1703124-48	13-Jan-17					Client ID: 563-BS-01F not analyzed	
1703124-49	13-Jan-17					Client ID: 563-BS-01G not analyzed	
1703124-50	13-Jan-17	sample homogenized	Beige	Stucco	Yes	Client ID: 563-BS-02A <b>Chrysotile</b> Non-Fibers	1 99
1703124-51	13-Jan-17					Client ID: 563-BS-02B not analyzed	
1703124-52	13-Jan-17					Client ID: 563-BS-02C not analyzed	
1703124-53	13-Jan-17					Client ID: 563-BS-02D not analyzed	
1703124-54	13-Jan-17					Client ID: 563-BS-02E not analyzed	
1703124-55	13-Jan-17	sample homogenized	White	Floor Tile	No	Client ID: 563-BS-03A (Tile) Non-Fibers	[AS-PRE] 100
1703124-56	13-Jan-17	sample homogenized	White	Floor Tile	No	Client ID: 563-BS-03B (Tile) Non-Fibers	[AS-PRE] 100
1703124-57	13-Jan-17	sample homogenized	White	Floor Tile	No	Client ID: 563-BS-03C (Tile) Non-Fibers	[AS-PRE] 100
1703124-58	13-Jan-17	sample homogenized	Beige	Floor Tile	No	Client ID: 563-BS-04A (Tile) Non-Fibers Other fibers	[AS-PRE] 97 3
1703124-59	13-Jan-17	sample homogenized	Beige	Floor Tile	No	Client ID: 563-BS-04B (Tile) Non-Fibers Other fibers	[AS-PRE] 97 3
1703124-60	13-Jan-17	sample homogenized	Beige	Floor Tile	No	Client ID: 563-BS-04C (Tile) Non-Fibers Other fibers	[AS-PRE] 97 3
1703124-61	13-Jan-17	sample homogenized	Grey	Drywall Joint Compound	Yes	Client ID: 574-BS-01A <b>Chrysotile</b> Non-Fibers	2 98

Certificate of Analysis  
 Client: **Stantec Consulting Ltd. (Ottawa)**  
 Client PO: **122150275**

Report Date: 20-Jan-2017  
 Order Date: 16-Jan-2017

Project Description: **122150275- 518, 550, 555, 563 + 574 Fort Town Dr.**

**Asbestos, PLM Visual Estimation    \*\*MDL - 0.5%\*\***

<i>Parcel I.D.</i>	<i>Sample Date</i>	<i>Layers Analyzed</i>	<i>Colour</i>	<i>Description</i>	<i>Asbestos Detected:</i>	<i>Material Identification</i>	<i>% Content</i>
1703124-62	13-Jan-17					Client ID: 574-BS-01B not analyzed	
1703124-63	13-Jan-17					Client ID: 574-BS-01C not analyzed	
1703124-64	13-Jan-17					Client ID: 574-BS-01D not analyzed	
1703124-65	13-Jan-17					Client ID: 574-BS-01E not analyzed	
1703124-66	13-Jan-17					Client ID: 574-BS-01F not analyzed	
1703124-67	13-Jan-17					Client ID: 574-BS-01G not analyzed	
1703124-68	13-Jan-17	sample homogenized	Grey	Stucco	Yes	Client ID: 574-BS-02A <b>Chrysotile</b> Non-Fibers	1 99
1703124-69	13-Jan-17					Client ID: 574-BS-02B not analyzed	
1703124-70	13-Jan-17					Client ID: 574-BS-02C not analyzed	
1703124-71	13-Jan-17					Client ID: 574-BS-02D not analyzed	
1703124-72	13-Jan-17					Client ID: 574-BS-02E not analyzed	
1703124-73	13-Jan-17	sample homogenized	White	Floor Tile	No	Client ID: 574-BS-03A (Tile) Non-Fibers	[AS-PRE] 100
1703124-74	13-Jan-17	sample homogenized	White	Floor Tile	No	Client ID: 574-BS-03B (Tile) Non-Fibers	[AS-PRE] 100
1703124-75	13-Jan-17	sample homogenized	White	Floor Tile	No	Client ID: 574-BS-03C (Tile) Non-Fibers	[AS-PRE] 100
1703124-76	13-Jan-17	sample homogenized	Beige	Floor Tile	No	Client ID: 574-BS-04A (Tile) Non-Fibers	[AS-PRE] 100
1703124-77	13-Jan-17	sample homogenized	Beige	Floor Tile	No	Client ID: 574-BS-04B (Tile) Non-Fibers	[AS-PRE] 100
1703124-78	13-Jan-17	sample homogenized	Beige	Floor Tile	No	Client ID: 574-BS-04C (Tile) Non-Fibers	[AS-PRE] 100

Certificate of Analysis

Report Date: 20-Jan-2017

Client: **Stantec Consulting Ltd. (Ottawa)**

Order Date: 16-Jan-2017

Client PO: 122150275

Project Description: 122150275- 518, 550, 555, 563 + 574 Fort Town Dr.

**Asbestos, PLM Visual Estimation    \*\*MDL - 0.5%\*\***

Parcel I.D.	Sample Date	Layers Analyzed	Colour	Description	Asbestos Detected:	Material Identification	% Content
1703124-79	13-Jan-17	sample homogenized	Black	Mastic	No	<b>Client ID: 574-BS-04A (Mastic)</b> [AS-PRE] Non-Fibers	100
1703124-80	13-Jan-17	sample homogenized	Black	Mastic	No	<b>Client ID: 574-BS-04B (Mastic)</b> [AS-PRE] Non-Fibers	100
1703124-81	13-Jan-17	sample homogenized	Black	Mastic	No	<b>Client ID: 574-BS-04C (Mastic)</b> [AS-PRE] Non-Fibers	100

\* MMVF: Man Made Vitreous Fibers: Fiberglass, Mineral Wool, Rockwool, Glasswool

\*\* Analytes in bold indicate asbestos mineral content.

**Analysis Summary Table**

Analysis	Method Reference/Description	Lab Location	NVLAP Lab Code *	Analysis Date
Asbestos, PLM Visual Estimation	by EPA 600/R-93/116	2 - Ottawa West Lab	200812-0	20-Jan-17

\* Reference to the NVLAP term does not permit the user of this report to claim product certification, approval, or endorsement by NVLAP, NIST, or any agency of the Federal Government.

**Qualifier Notes**

Sample Qualifiers :

AS-PRE: Due to the difficult nature of the bulk sample (interfering fibers/binders), additional NOB preparation was required prior to analysis

**Work Order Revisions / Comments**

None

## **ASBESTOS BUILDING MATERIALS ASSESSMENT**

Appendix C  
Summary of Occurrences of Asbestos-Containing Materials  
February 17, 2017

# Appendix C

## **Summary of Occurrences of Asbestos-Containing Materials**

## Summary of Occurrences of Asbestos-Containing Materials

Level	Room	Specific Location	ACM Location	ACM Type	Estimated Quantity	Sample Number	Original Sample?	Asbestos Content	Friable?	Visible?	Access.	ACM Condition	Comments/ Notes
1	518 Fort Town Drive	Kitchen	Walls and Ceiling	Drywall Joint-Fill Compound	110 sq.m	Ref: 518-BS-02A	No	1% Chrysotile	No	Yes	A	good	ACM
1	518 Fort Town Drive	Living Room	Walls and Ceiling	Drywall Joint-Fill Compound	100 sq.m	Ref: 518-BS-02A	No	1% Chrysotile	No	Yes	A	good	ACM
1	518 Fort Town Drive	Living Room	Ceiling	Stucco	35 sq.m	Ref: 518-BS-02A	No	1% Chrysotile	No	Yes	C	good	ACM
1	518 Fort Town Drive	Main Entrance Hallway	Walls and Ceiling	Drywall Joint-Fill Compound	35 sq.m	Ref: 518-BS-02A	No	1% Chrysotile	No	Yes	A	good	ACM
1	518 Fort Town Drive	Main Entrance Hallway	Ceiling	Stucco	6 sq.m	518-BS-02A	Yes	1% Chrysotile	No	Yes	C	good	ACM
1-2	518 Fort Town Drive	Stairwell	Walls	Drywall Joint-Fill Compound	30 sq.m	Ref: 518-BS-01A	No	1% Chrysotile	No	Yes	A	good	ACM
2	518 Fort Town Drive	East Bedroom	Ceiling	Stucco	15 sq.m	Ref: 518-BS-02A	No	1% Chrysotile	No	Yes	C	good	ACM
2	518 Fort Town Drive	East Bedroom	Walls and Ceiling	Drywall Joint-Fill Compound	65 sq.m	Ref: 518-BS-01A	No	1% Chrysotile	No	Yes	A	good	ACM
2	518 Fort Town Drive	Hallway	Ceiling	Stucco	5 sq.m	Ref: 518-BS-02A	No	1% Chrysotile	No	Yes	C	good	ACM
2	518 Fort Town Drive	North Bedroom	Ceiling	Stucco	15 sq.m	Ref: 518-BS-02A	No	1% Chrysotile	No	Yes	C	good	ACM
2	518 Fort Town Drive	North Bedroom	Walls and Ceiling	Drywall Joint-Fill Compound	60 sq.m	Ref: 518-BS-01A	No	1% Chrysotile	No	Yes	A	good	ACM

### Accessibility Classification

- A - Areas of the building within reach (from floor level) of all building users
- B - Frequently entered maintenance areas within reach of maintenance staff, without the need for a ladder
- C - Areas of the building above 2.4 m where use of a ladder is required to reach the asbestos
- D - Areas of the building behind inaccessible solid ceiling systems, walls, or mechanical equipment, etc., where demolition of the ceiling, wall, or equipment, etc., is required to reach the asbestos

### Visibility

- Yes - Suspect material is visible without opening hatches or lifting ceiling tiles
- No - Suspect material can only be viewed if access hatches are opened or ceiling tiles lifted.

\* Based on a non-intrusive inspection of visible surfaces within the room space.

- Notes:
- ACM - asbestos-containing material
  - PACM - presumed asbestos-containing material
  - Access. - accessibility
  - nq - not quantified
  - na - not applicable
  - ns - not sampled
  - ref - reference sample
  - F - friable
  - NF - non friable
  - RCA - recommend corrective action
  - BS - bulk sample

## Summary of Occurrences of Asbestos-Containing Materials

Level	Room	Specific Location	ACM Location	ACM Type	Estimated Quantity	Sample Number	Original Sample?	Asbestos Content	Friable? Visible?	Access.	ACM Condition	Comments/ Notes
2	518 Fort Town Drive	Northeast Bedroom	Ceiling	Stucco	15 sq.m	Ref: 518-BS-02A	No	1% Chrysotile	No Yes	C	good	ACM
2	518 Fort Town Drive	Northeast Bedroom	Walls and Ceiling	Drywall Joint-Fill Compound	65 sq.m	Ref: 518-BS-01A	No	1% Chrysotile	No Yes	A	good	ACM
2	518 Fort Town Drive	South Bedroom	Ceiling	Stucco	15 sq.m	Ref: 518-BS-02A	No	1% Chrysotile	No Yes	C	good	ACM
2	518 Fort Town Drive	South Bedroom	Walls and Ceiling	Drywall Joint-Fill Compound	65 sq.m	Ref: 518-BS-01A	No	1% Chrysotile	No Yes	A	good	ACM
2	518 Fort Town Drive	Washroom	Walls and Ceiling	Drywall Joint-Fill Compound	20 sq.m	Ref: 518-BS-01A	No	1% Chrysotile	No Yes	A	good	ACM
Exterior	518 Fort Town Drive	Walls	Walls	Brick Mortar	NQ	NS	No	PACM	No Yes	A	good (PACM)	PACM
Exterior	518 Fort Town Drive	Windows and Doors	Windows and Doors	Exterior Caulking - white	NQ	NS	No	PACM	No Yes	A	good (PACM)	PACM
1	550 Fort Town Drive	Hallway	Under Floor Tile	Mastic Associated with 12"x12' Vinyl Floor Tile - Beige with Grey Flecks	6 sq.m	NS	No	PACM	No No	D	unknown (PACM)	PACM
1	550 Fort Town Drive	Kitchen	Walls and Ceiling	Drywall Joint-Fill Compound	110 sq.m	Ref: 550-BS-01A	No	1% Chrysotile	No Yes	A	good	ACM
1	550 Fort Town Drive	Kitchen	Under Floor Tile	Mastic Associated with 12"x12' Vinyl Floor Tile - Beige with Grey Flecks	6 sq.m	NS	No	PACM	No No	D	unknown (PACM)	PACM
1	550 Fort Town Drive	Living Room	Under Floor Tile	Mastic Associated with 12"x12' Vinyl Floor Tile - Beige with Grey Flecks	35 sq.m	NS	No	PACM	No No	D	unknown (PACM)	PACM

### Accessibility Classification

- A - Areas of the building within reach (from floor level) of all building users
- B - Frequently entered maintenance areas within reach of maintenance staff, without the need for a ladder
- C - Areas of the building above 2.4 m where use of a ladder is required to reach the asbestos
- D - Areas of the building behind inaccessible solid ceiling systems, walls, or mechanical equipment, etc., where demolition of the ceiling, wall, or equipment, etc., is required to reach the asbestos

### Visibility

- Yes - Suspect material is visible without opening hatches or lifting ceiling tiles
- No - Suspect material can only be viewed if access hatches are opened or ceiling tiles lifted.

\* Based on a non-intrusive inspection of visible surfaces within the room space.

- Notes:
- ACM - asbestos-containing material
  - PACM - presumed asbestos-containing material
  - Access. - accessibility
  - nq - not quantified
  - na - not applicable
  - ns - not sampled
  - ref - reference sample
  - F - friable
  - NF - non friable
  - RCA - recommend corrective action
  - BS - bulk sample

## Summary of Occurrences of Asbestos-Containing Materials

Level	Room	Specific Location	ACM Location	ACM Type	Estimated Quantity	Sample Number	Original Sample?	Asbestos Content	Friable? Visible?	Access.	ACM Condition	Comments/ Notes
1	550 Fort Town Drive	Living Room	Ceiling	Stucco	35 sq.m	Ref: 550-BS-02A	No	1% Chrysotile	No Yes	C	good	ACM
1	550 Fort Town Drive	Living Room	Walls and Ceiling	Drywall Joint-Fill Compound	115 sq.m	Ref: 550-BS-01A	No	1% Chrysotile	No Yes	A	good	ACM
1	550 Fort Town Drive	Main Entrance Hallway	Walls and Ceiling	Drywall Joint-Fill Compound	40 sq.m	550-BS-01A	Yes	1% Chrysotile	No Yes	A	good	ACM
1	550 Fort Town Drive	Main Entrance Hallway	Ceiling	Stucco	6 sq.m	550-BS-02A	Yes	1% Chrysotile	No Yes	C	good	ACM
1-2	550 Fort Town Drive	Stairwell	Walls and Ceiling	Drywall Joint-Fill Compound	30 sq.m	Ref: 550-BS-01A	No	1% Chrysotile	No Yes	A	good	ACM
2	550 Fort Town Drive	East Bedroom	Walls and Ceiling	Drywall Joint-Fill Compound	70 sq.m	Ref: 550-BS-01A	No	1% Chrysotile	No Yes	A	good	ACM
2	550 Fort Town Drive	East Bedroom	Ceiling	Stucco	20 sq.m	Ref: 550-BS-02A	No	1% Chrysotile	No Yes	C	good	ACM
2	550 Fort Town Drive	Hallway	Ceiling	Stucco	6 sq.m	Ref: 550-BS-02A	No	1% Chrysotile	No Yes	C	good	ACM
2	550 Fort Town Drive	Hallway	Walls and Ceiling	Drywall Joint-Fill Compound	45 sq.m	550-BS-01A	Yes	1% Chrysotile	No Yes	A	good	ACM
2	550 Fort Town Drive	North Bedroom	Ceiling	Stucco	15 sq.m	Ref: 550-BS-02A	No	1% Chrysotile	No Yes	C	good	ACM
2	550 Fort Town Drive	North Bedroom	Walls and Ceiling	Drywall Joint-Fill Compound	65 sq.m	Ref: 550-BS-01A	No	1% Chrysotile	No Yes	A	good	ACM

### Accessibility Classification

- A - Areas of the building within reach (from floor level) of all building users
- B - Frequently entered maintenance areas within reach of maintenance staff, without the need for a ladder
- C - Areas of the building above 2.4 m where use of a ladder is required to reach the asbestos
- D - Areas of the building behind inaccessible solid ceiling systems, walls, or mechanical equipment, etc., where demolition of the ceiling, wall, or equipment, etc., is required to reach the asbestos

### Visibility

- Yes - Suspect material is visible without opening hatches or lifting ceiling tiles
- No - Suspect material can only be viewed if access hatches are opened or ceiling tiles lifted.

\* Based on a non-intrusive inspection of visible surfaces within the room space.

- Notes:
- ACM - asbestos-containing material
  - PACM - presumed asbestos-containing material
  - Access. - accessibility
  - nq - not quantified
  - na - not applicable
  - ns - not sampled
  - ref - reference sample
  - F - friable
  - NF - non friable
  - RCA - recommend corrective action
  - BS - bulk sample

## Summary of Occurrences of Asbestos-Containing Materials

Level	Room	Specific Location	ACM Location	ACM Type	Estimated Quantity	Sample Number	Original Sample?	Asbestos Content	Friable? Visible?	Access.	ACM Condition	Comments/ Notes
2	550 Fort Town Drive	Northeast Bedroom	Ceiling	Stucco	20 sq.m	Ref: 550-BS-02A	No	1% Chrysotile	No Yes	C	good	ACM
2	550 Fort Town Drive	Northeast Bedroom	Walls and Ceiling	Drywall Joint-Fill Compound	70 sq.m	Ref: 550-BS-01A	No	1% Chrysotile	No Yes	A	good	ACM
2	550 Fort Town Drive	South Bedroom	Walls and Ceiling	Drywall Joint-Fill Compound	70 sq.m	Ref: 550-BS-01A	No	1% Chrysotile	No Yes	A	good	ACM
2	550 Fort Town Drive	South Bedroom	Ceiling	Stucco	20 sq.m	Ref: 550-BS-02A	No	1% Chrysotile	No Yes	C	good	ACM
2	550 Fort Town Drive	Washroom	Walls and Ceiling	Drywall Joint-Fill Compound	20 sq.m	Ref: 550-BS-01A	No	1% Chrysotile	No Yes	A	good	ACM
B	550 Fort Town Drive	Stairwell	Walls	Drywall Joint-Fill Compound	15 sq.m	Ref: 550-BS-01A	No	1% Chrysotile	No Yes	A	good	ACM
Exterior	550 Fort Town Drive	Walls	Walls	Brick Mortar	NQ	NS	No	PACM	No Yes	A	good (PACM)	PACM
Exterior	550 Fort Town Drive	Windows and Doors	Windows and Doors	Exterior Caulking - white	NQ	NS	No	PACM	No Yes	A	good (PACM)	PACM
Interior	550 Fort Town Drive	Windows and Doors	Windows and Doors	Interior Caulking - white	NQ	NS	No	PACM	No Yes	A	good (PACM)	PACM
1	555 Fort Town Drive	Kitchen	Walls and Ceiling	Drywall Joint-Fill Compound	100 sq.m	Ref: 555-BS-01A	No	1% Chrysotile	No Yes	A	good	ACM
1	555 Fort Town Drive	Living Room	Ceiling	Stucco	30 sq.m	Ref: 555-BS-02A	No	2% Chrysotile	No Yes	C	good	ACM
1	555 Fort Town Drive	Living Room	Walls and Ceiling	Drywall Joint-Fill Compound	110 sq.m	Ref: 555-BS-01A	No	1% Chrysotile	No Yes	A	good	ACM

### Accessibility Classification

- A - Areas of the building within reach (from floor level) of all building users
- B - Frequently entered maintenance areas within reach of maintenance staff, without the need for a ladder
- C - Areas of the building above 2.4 m where use of a ladder is required to reach the asbestos
- D - Areas of the building behind inaccessible solid ceiling systems, walls, or mechanical equipment, etc., where demolition of the ceiling, wall, or equipment, etc., is required to reach the asbestos

### Visibility

- Yes - Suspect material is visible without opening hatches or lifting ceiling tiles
- No - Suspect material can only be viewed if access hatches are opened or ceiling tiles lifted.

\* Based on a non-intrusive inspection of visible surfaces within the room space.

- Notes:
- ACM - asbestos-containing material
  - PACM - presumed asbestos-containing material
  - Access. - accessibility
  - nq - not quantified
  - na - not applicable
  - ns - not sampled
  - ref - reference sample
  - F - friable
  - NF - non friable
  - RCA - recommend corrective action
  - BS - bulk sample

## Summary of Occurrences of Asbestos-Containing Materials

Level	Room	Specific Location	ACM Location	ACM Type	Estimated Quantity	Sample Number	Original Sample?	Asbestos Content	Friable? Visible?	Access.	ACM Condition	Comments/ Notes
1	555 Fort Town Drive	Main Entrance Hallway	Walls and Ceiling	Drywall Joint-Fill Compound	40 sq.m	555-BS-01A	Yes	1% Chrysotile	No Yes	A	poor	3 SQ.M CHIPPED ON CORNERS
1	555 Fort Town Drive	Main Entrance Hallway	Ceiling	Stucco	10 sq.m	Ref: 555- BS-02A	No	2% Chrysotile	No Yes	C	good	ACM
1-2	555 Fort Town Drive	Stairwell	Walls and Ceiling	Drywall Joint-Fill Compound	30 sq.m	Ref: 555-BS-01A	No	1% Chrysotile	No Yes	A	good	ACM
2	555 Fort Town Drive	Hallway	Walls and Ceiling	Drywall Joint-Fill Compound	30 sq.m	Ref: 555-BS-01A	No	1% Chrysotile	No Yes	A	good	ACM
2	555 Fort Town Drive	Hallway	Ceiling	Stucco	10 sq.m	555- BS-02A	Yes	2% Chrysotile	No Yes	C	good	ACM
2	555 Fort Town Drive	Northwest Bedroom	Ceiling	Stucco	20 sq.m	Ref: 555- BS-02A	No	2% Chrysotile	No Yes	C	good	ACM
2	555 Fort Town Drive	Northwest Bedroom	Walls and Ceiling	Drywall Joint-Fill Compound	60 sq.m	Ref: 555-BS-01A	No	1% Chrysotile	No Yes	A	good	ACM
2	555 Fort Town Drive	South Bedroom	Ceiling	Stucco	10 sq.m	Ref: 555- BS-02A	No	2% Chrysotile	No Yes	C	good	ACM
2	555 Fort Town Drive	South Bedroom	Walls and Ceiling	Drywall Joint-Fill Compound	60 sq.m	Ref: 555-BS-01A	No	1% Chrysotile	No Yes	A	good	ACM
2	555 Fort Town Drive	Southwest Bedroom	Ceiling	Stucco	15 sq.m	Ref: 555- BS-02A	No	2% Chrysotile	No Yes	C	good	ACM
2	555 Fort Town Drive	Southwest Bedroom	Walls and Ceiling	Drywall Joint-Fill Compound	60 sq.m	Ref: 555-BS-01A	No	1% Chrysotile	No Yes	A	good	ACM

### Accessibility Classification

- A - Areas of the building within reach (from floor level) of all building users
- B - Frequently entered maintenance areas within reach of maintenance staff, without the need for a ladder
- C - Areas of the building above 2.4 m where use of a ladder is required to reach the asbestos
- D - Areas of the building behind inaccessible solid ceiling systems, walls, or mechanical equipment, etc., where demolition of the ceiling, wall, or equipment, etc., is required to reach the asbestos

### Visibility

- Yes - Suspect material is visible without opening hatches or lifting ceiling tiles
- No - Suspect material can only be viewed if access hatches are opened or ceiling tiles lifted.

- Notes:
- ACM - asbestos-containing material
  - PACM - presumed asbestos-containing material
  - Access. - accessibility
  - nq - not quantified
  - na - not applicable
  - ns - not sampled
  - ref - reference sample
  - F - friable
  - NF - non friable
  - RCA - recommend corrective action
  - BS - bulk sample

\* Based on a non-intrusive inspection of visible surfaces within the room space.

## Summary of Occurrences of Asbestos-Containing Materials

Level	Room	Specific Location	ACM Location	ACM Type	Estimated Quantity	Sample Number	Original Sample?	Asbestos Content	Friable? Visible?	Access.	ACM Condition	Comments/ Notes
2	555 Fort Town Drive	Washroom	Walls and Ceiling	Drywall Joint-Fill Compound	20 sq.m	Ref: 555-BS-01A	No	1% Chrysotile	No Yes	A	poor	1 SQ.M WATER DAMAGE
Exterior	555 Fort Town Drive	Walls	Walls	Brick Mortar	NQ	NS	No	PACM	No Yes	A	good (PACM)	PACM
Exterior	555 Fort Town Drive	Windows and Doors	Windows and Doors	Exterior Caulking - white	NQ	NS	No	PACM	No Yes	A	good (PACM)	PACM
Interior	555 Fort Town Drive	Windows and Doors	Windows and Doors	Interior Caulking - white	NQ	NS	No	PACM	No Yes	A	good (PACM)	PACM
1	563 Fort Town Drive	Kitchen	Walls and Ceiling	Drywall Joint-Fill Compound	100 sq.m	Ref: 563-BS-01A	No	2% Chrysotile	No Yes	A	good	ACM
1	563 Fort Town Drive	Kitchen	Under Floor Tile	Mastic Associated with 12"x12' Vinyl Floor Tile - white with black flecks	30 sq.m	NS	No	PACM	No No	D	unknown (PACM)	PACM
1	563 Fort Town Drive	Living Room	Under Floor Tile	Mastic Associated with 12"x12' Vinyl Floor Tile - white with black flecks	35 sq.m	NS	No	PACM	No No	D	unknown (PACM)	PACM
1	563 Fort Town Drive	Living Room	Ceiling	Stucco	35 sq.m	Ref: 563-BS-02A	No	1% Chrysotile	No Yes	A	good	ACM
1	563 Fort Town Drive	Living Room	Walls and Ceiling	Drywall Joint-Fill Compound	115 sq.m	Ref: 563-BS-01A	No	2% Chrysotile	No Yes	A	good	ACM
1	563 Fort Town Drive	Main Entrance Hallway	Under Floor Tile	Mastic Associated with 12"x12' Vinyl Floor Tile - white with black flecks	6 sq.m	NS	No	PACM	No No	D	unknown (PACM)	PACM

### Accessibility Classification

- A - Areas of the building within reach (from floor level) of all building users
- B - Frequently entered maintenance areas within reach of maintenance staff, without the need for a ladder
- C - Areas of the building above 2.4 m where use of a ladder is required to reach the asbestos
- D - Areas of the building behind inaccessible solid ceiling systems, walls, or mechanical equipment, etc., where demolition of the ceiling, wall, or equipment, etc., is required to reach the asbestos

### Visibility

- Yes - Suspect material is visible without opening hatches or lifting ceiling tiles
- No - Suspect material can only be viewed if access hatches are opened or ceiling tiles lifted.

\* Based on a non-intrusive inspection of visible surfaces within the room space.

- Notes:
- ACM - asbestos-containing material
  - PACM - presumed asbestos-containing material
  - Access. - accessibility
  - nq - not quantified
  - na - not applicable
  - ns - not sampled
  - ref - reference sample
  - F - friable
  - NF - non friable
  - RCA - recommend corrective action
  - BS - bulk sample

## Summary of Occurrences of Asbestos-Containing Materials

Level	Room	Specific Location	ACM Location	ACM Type	Estimated Quantity	Sample Number	Original Sample?	Asbestos Content	Friable? Visible?	Access.	ACM Condition	Comments/ Notes
1	563 Fort Town Drive	Main Entrance Hallway	Walls and Ceiling	Drywall Joint-Fill Compound	35 sq.m	Ref: 563-BS-01A	No	2% Chrysotile	No Yes	A	good	ACM
1	563 Fort Town Drive	Main Entrance Hallway	Ceiling	Stucco	35 sq.m	563-BS-02A	Yes	1% Chrysotile	No Yes	A	good	ACM
1-2	563 Fort Town Drive	Stairwell	Walls and Ceiling	Drywall Joint-Fill Compound	35 sq.m	Ref: 563-BS-01A	No	1% Chrysotile	No Yes	A	good	ACM
2	563 Fort Town Drive	Hallway	Ceiling	Stucco	10 sq.m	Ref: 563-BS-02A	No	1% Chrysotile	No Yes	C	good	ACM
2	563 Fort Town Drive	Hallway	Under Floor Tile	Mastic Associated with 12"x12' Vinyl Floor Tile - beige with dark beige streaks	8 sq.m	NS	No	PACM	No No	D	unknown (PACM)	PACM
2	563 Fort Town Drive	Hallway	Walls and Ceiling	Drywall Joint-Fill Compound	35 sq.m	563-BS-01A	Yes	1% Chrysotile	No Yes	A	good	ACM
2	563 Fort Town Drive	North Bedroom	Ceiling	Stucco	10 sq.m	Ref: 563-BS-02A	No	1% Chrysotile	No Yes	C	good	ACM
2	563 Fort Town Drive	North Bedroom	Under Floor Tile	Mastic Associated with 12"x12' Vinyl Floor Tile - beige with dark beige streaks	10 sq.m	NS	No	PACM	No No	D	unknown (PACM)	PACM
2	563 Fort Town Drive	North Bedroom	Walls and Ceiling	Drywall Joint-Fill Compound	60 sq.m	Ref: 563-BS-01A	No	1% Chrysotile	No Yes	A	good	ACM
2	563 Fort Town Drive	Northeast Bedroom	Ceiling	Stucco	15 sq.m	Ref: 563-BS-02A	No	1% Chrysotile	No Yes	C	good	ACM

### Accessibility Classification

- A - Areas of the building within reach (from floor level) of all building users
- B - Frequently entered maintenance areas within reach of maintenance staff, without the need for a ladder
- C - Areas of the building above 2.4 m where use of a ladder is required to reach the asbestos
- D - Areas of the building behind inaccessible solid ceiling systems, walls, or mechanical equipment, etc., where demolition of the ceiling, wall, or equipment, etc., is required to reach the asbestos

### Visibility

- Yes - Suspect material is visible without opening hatches or lifting ceiling tiles
- No - Suspect material can only be viewed if access hatches are opened or ceiling tiles lifted.

\* Based on a non-intrusive inspection of visible surfaces within the room space.

- Notes:
- ACM - asbestos-containing material
  - PACM - presumed asbestos-containing material
  - Access. - accessibility
  - nq - not quantified
  - na - not applicable
  - ns - not sampled
  - ref - reference sample
  - F - friable
  - NF - non friable
  - RCA - recommend corrective action
  - BS - bulk sample

## Summary of Occurrences of Asbestos-Containing Materials

Level	Room	Specific Location	ACM Location	ACM Type	Estimated Quantity	Sample Number	Original Sample?	Asbestos Content	Friable? Visible?	Access.	ACM Condition	Comments/ Notes
2	563 Fort Town Drive	Northeast Bedroom	Under Floor Tile	Mastic Associated with 12"x12' Vinyl Floor Tile - beige with dark beige streaks	15 sq.m	NS	No	PACM	No No	D	unknown (PACM)	PACM
2	563 Fort Town Drive	Northeast Bedroom	Walls and Ceiling	Drywall Joint-Fill Compound	65 sq.m	Ref: 563-BS-01A	No	1% Chrysotile	No Yes	A	good	ACM
2	563 Fort Town Drive	South Bedroom	Ceiling	Stucco	10 sq.m	Ref: 563-BS-02A	No	1% Chrysotile	No Yes	C	good	ACM
2	563 Fort Town Drive	South Bedroom	Under Floor Tile	Mastic Associated with 12"x12' Vinyl Floor Tile - beige with dark beige streaks	10 sq.m	NS	No	PACM	No No	D	unknown (PACM)	PACM
2	563 Fort Town Drive	South Bedroom	Walls and Ceiling	Drywall Joint-Fill Compound	60 sq.m	Ref: 563-BS-01A	No	1% Chrysotile	No Yes	A	good	ACM
2	563 Fort Town Drive	Southeast Bedroom	Ceiling	Stucco	15 sq.m	Ref: 563-BS-02A	No	1% Chrysotile	No Yes	C	good	ACM
2	563 Fort Town Drive	Southeast Bedroom	Walls and Ceiling	Drywall Joint-Fill Compound	65 sq.m	Ref: 563-BS-01A	No	1% Chrysotile	No Yes	A	good	ACM
2	563 Fort Town Drive	Southeast Bedroom	Under Floor Tile	Mastic Associated with 12"x12' Vinyl Floor Tile - beige with dark beige streaks	15 sq.m	NS	No	PACM	No No	D	unknown (PACM)	PACM
B	563 Fort Town Drive	Stairwell	Walls	Drywall Joint-Fill Compound	20 sq.m	Ref: 563-BS-01A	No	1% Chrysotile	No Yes	A	good	ACM
Exterior	563 Fort Town Drive	Walls	Walls	Brick Mortar	NQ	NS	No	PACM	No Yes	A	good (PACM)	PACM

### Accessibility Classification

- A - Areas of the building within reach (from floor level) of all building users
- B - Frequently entered maintenance areas within reach of maintenance staff, without the need for a ladder
- C - Areas of the building above 2.4 m where use of a ladder is required to reach the asbestos
- D - Areas of the building behind inaccessible solid ceiling systems, walls, or mechanical equipment, etc., where demolition of the ceiling, wall, or equipment, etc., is required to reach the asbestos

### Visibility

- Yes - Suspect material is visible without opening hatches or lifting ceiling tiles
- No - Suspect material can only be viewed if access hatches are opened or ceiling tiles lifted.

\* Based on a non-intrusive inspection of visible surfaces within the room space.

- Notes:
- ACM - asbestos-containing material
  - PACM - presumed asbestos-containing material
  - Access. - accessibility
  - nq - not quantified
  - na - not applicable
  - ns - not sampled
  - ref - reference sample
  - F - friable
  - NF - non friable
  - RCA - recommend corrective action
  - BS - bulk sample

## Summary of Occurrences of Asbestos-Containing Materials

Level	Room	Specific Location	ACM Location	ACM Type	Estimated Quantity	Sample Number	Original Sample?	Asbestos Content	Friable? Visible?	Access.	ACM Condition	Comments/ Notes
Exterior	563 Fort Town Drive	Windows and Doors	Windows and Doors	Exterior Caulking - white	NQ	NS	No	PACM	No Yes	A	good (PACM)	PACM
1	574 Fort Town Drive	Kitchen	Walls and Ceiling	Drywall Joint-Fill Compound	80 sq.m	574-BS-01A	Yes	2% Chrysotile	No Yes	A	poor	<1 SQ.M CHIPPED
1	574 Fort Town Drive	Living Room	Under Floor Tile	Mastic Associated with 12"x12' Vinyl Floor Tile - white with black flecks	30 sq.m	NS	No	PACM	No No	D	unknown (PACM)	PACM
1	574 Fort Town Drive	Living Room and Main Entrance	Ceiling	Stucco	35 sq.m	Ref: 574-BS-02A	No	1% Chrysotile	No Yes	A	good	ACM
1	574 Fort Town Drive	Living Room and Main Entrance	Walls and Ceiling	Drywall Joint-Fill Compound	110 sq.m	Ref: 574-BS-01A	No	2% Chrysotile	No Yes	A	good	ACM
1-2	574 Fort Town Drive	Stairwell	Walls and Ceiling	Drywall Joint-Fill Compound	20 sq.m	Ref: 574-BS-01A	No	2% Chrysotile	No Yes	A	good	ACM
2	574 Fort Town Drive	Hallway	Ceiling	Stucco	6 sq.m	574-BS-02A	Yes	1% Chrysotile	No Yes	A	good	ACM
2	574 Fort Town Drive	Hallway	Walls and Ceiling	Drywall Joint-Fill Compound	20 sq.m	Ref: 574-BS-01A	No	2% Chrysotile	No Yes	A	good	ACM
2	574 Fort Town Drive	Northwest Bedroom	Ceiling	Stucco	15 sq.m	Ref: 574-BS-02A	No	1% Chrysotile	No Yes	A	good	ACM
2	574 Fort Town Drive	Northwest Bedroom	Walls and Ceiling	Drywall Joint-Fill Compound	45 sq.m	Ref: 574-BS-01A	No	2% Chrysotile	No Yes	A	good	ACM
2	574 Fort Town Drive	Southwest Bedroom	Ceiling	Stucco	15 sq.m	Ref: 574-BS-02A	No	1% Chrysotile	No Yes	A	good	ACM

### Accessibility Classification

- A - Areas of the building within reach (from floor level) of all building users
- B - Frequently entered maintenance areas within reach of maintenance staff, without the need for a ladder
- C - Areas of the building above 2.4 m where use of a ladder is required to reach the asbestos
- D - Areas of the building behind inaccessible solid ceiling systems, walls, or mechanical equipment, etc., where demolition of the ceiling, wall, or equipment, etc., is required to reach the asbestos

### Visibility

- Yes - Suspect material is visible without opening hatches or lifting ceiling tiles
- No - Suspect material can only be viewed if access hatches are opened or ceiling tiles lifted.

\* Based on a non-intrusive inspection of visible surfaces within the room space.

- Notes:
- ACM - asbestos-containing material
  - PACM - presumed asbestos-containing material
  - Access. - accessibility
  - nq - not quantified
  - na - not applicable
  - ns - not sampled
  - ref - reference sample
  - F - friable
  - NF - non friable
  - RCA - recommend corrective action
  - BS - bulk sample

## Summary of Occurrences of Asbestos-Containing Materials

Level	Room	Specific Location	ACM Location	ACM Type	Estimated Quantity	Sample Number	Original Sample?	Asbestos Content	Friable?	Visible?	Access.	ACM Condition	Comments/ Notes
2	574 Fort Town Drive	Southwest Bedroom	Walls and Ceiling	Drywall Joint-Fill Compound	45 sq.m	Ref: 574-BS-01A	No	2% Chrysotile	No	Yes	A	good	ACM
2	574 Fort Town Drive	Storage	Walls and Ceiling	Drywall Joint-Fill Compound	12 sq.m	Ref: 574-BS-01A	No	2% Chrysotile	No	Yes	A	good	ACM
2	574 Fort Town Drive	Washroom	Walls and Ceiling	Drywall Joint-Fill Compound	20 sq.m	Ref: 574-BS-01A	No	2% Chrysotile	No	Yes	A	good	ACM
Exterior	574 Fort Town Drive	Walls	Walls	Brick Mortar	NQ	NS	No	PACM	No	Yes	A	good (PACM)	PACM
Exterior	574 Fort Town Drive	Windows and Doors	Windows and Doors	Interior Caulking - white	NQ	NS	No	PACM	No	Yes	A	good (PACM)	PACM

### Accessibility Classification

- A - Areas of the building within reach (from floor level) of all building users
- B - Frequently entered maintenance areas within reach of maintenance staff, without the need for a ladder
- C - Areas of the building above 2.4 m where use of a ladder is required to reach the asbestos
- D - Areas of the building behind inaccessible solid ceiling systems, walls, or mechanical equipment, etc., where demolition of the ceiling, wall, or equipment, etc., is required to reach the asbestos

### Visibility

- Yes - Suspect material is visible without opening hatches or lifting ceiling tiles
- No - Suspect material can only be viewed if access hatches are opened or ceiling tiles lifted.

\* Based on a non-intrusive inspection of visible surfaces within the room space.

- Notes:
- ACM - asbestos-containing material
  - PACM - presumed asbestos-containing material
  - Access. - accessibility
  - nq - not quantified
  - na - not applicable
  - ns - not sampled
  - ref - reference sample
  - F - friable
  - NF - non friable
  - RCA - recommend corrective action
  - BS - bulk sample

# **ASBESTOS BUILDING MATERIALS ASSESSMENT**

Appendix D  
Selected Site Photographs  
February 17, 2017

## Appendix D **Selected Site Photographs**

## ASBESTOS BUILDING MATERIALS ASSESSMENT

Appendix D  
Selected Site Photographs  
February 17, 2017



Photo 1: Asbestos-containing drywall joint-fill compound observed to be in poor condition on wall in the washroom at 555 Fort Town Drive.



Photo 2: Asbestos-containing drywall joint-fill compound observed to be in poor condition on the kitchen wall at 574 Fort Town Drive.



Photo 3: Asbestos-containing drywall joint-fill compound and stucco observed at 550 Fort Town Drive.

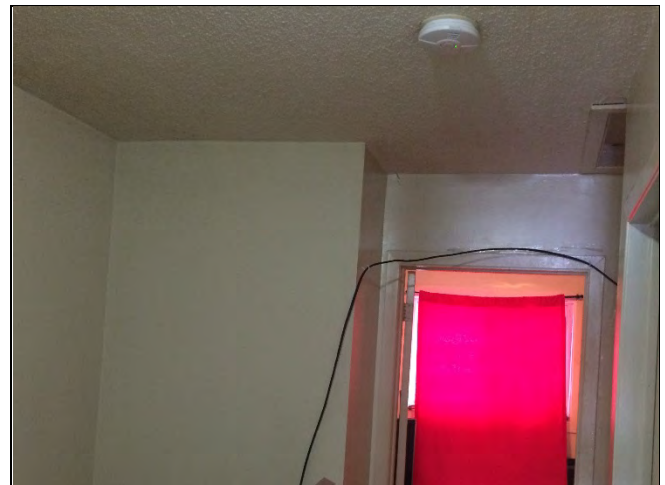


Photo 4: Asbestos-containing drywall joint-fill compound and stucco observed on walls and ceiling at 518 Fort Town Drive.

## ASBESTOS BUILDING MATERIALS ASSESSMENT

Appendix D  
Selected Site Photographs  
February 17, 2017



Photo 5: Asbestos-containing stucco and drywall joint-fill compound observed at 563 Fort Town Drive.



Photo 6: Presumed asbestos-containing brick mortar observed to be present on the exterior walls.



Photo 7: Presumed asbestos-containing exterior caulking – white observed on the exterior windows and doors at 518 Fort Town Drive.