

Agriculture Area Review (AAR)

Public Information Session

December 12, 2022 at 4pm



PLANSCAPE

BUILDING COMMUNITY THROUGH PLANNING



SOIL RESOURCE GROUP

Agenda



- Project Team Introductions
- Description of the Project
- Public Participation
- Project Timelines and Deliverables

Introductions

Counties of Leeds and Grenville:

- Cherie Mills, Manager of Planning Services
- Elaine Mallory, Planner 1

Consultant Team:

- Margaret Walton, Senior Associate – Planscape Inc.
- Debbie Vandenakker, Senior Planner – Planscape Inc.
- Don King, Research Agronomist – The Soil Resource Group
- Greg Wall, Senior Soil Scientist – The Soil Resource Group
- Don Hodgson, Pedologist (GIS) – The Soil Resource Group



Project Description



- When the Counties Official Plan was approved, it identified that a comprehensive Land Evaluation and Area Review (LEAR) or equivalent study to assist in identifying and designating prime agricultural areas in the Counties needed to be completed prior to the next OP review (in 2026).
- This Agricultural Area Review is being undertaken to satisfy the provincial requirement.
- This project will identify and evaluate the candidate agricultural lands outside of the current Official Plan Agricultural Area designation and ultimately provide a map of the Counties agricultural system as the basis for an updated Counties Official Plan.



Project Workplan



Stage 1. Project Introduction (* we are here *)

- Introduce the project to the public, Advisory Committee and all stakeholders to review workplan, timing and deliverables. Feedback sought on any additional information that should be used (including community values, important known farmland etc.).

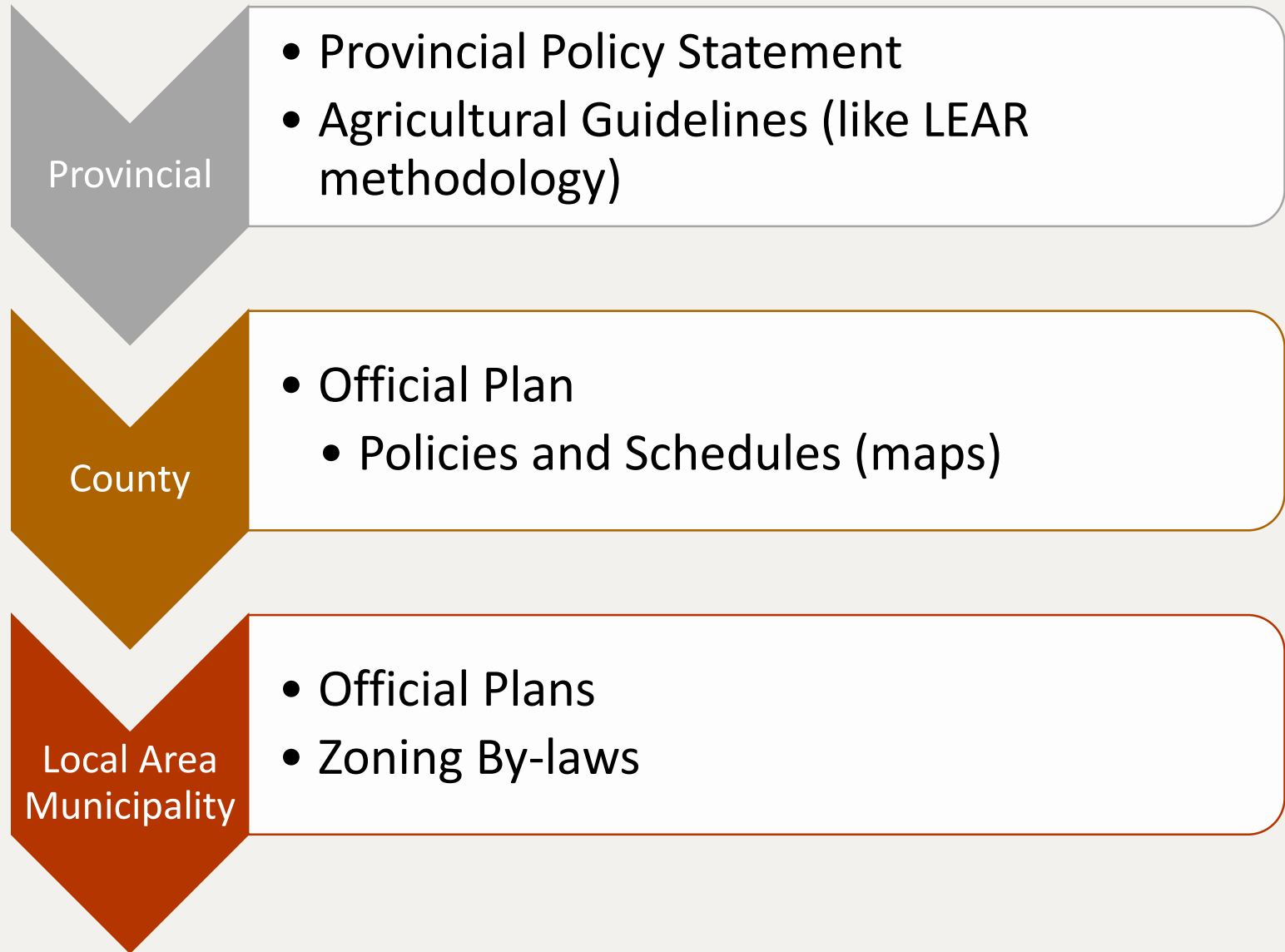
Stage 2. Technical Analysis and Candidate Agricultural Areas

- Undertake a modified LEAR methodology to rank the lands (more on this later)
- A map of candidate lands will be produced from the analysis and consulted on with stakeholders (public and agricultural community).

Stage 3. Report with Recommendations and Mapping

- A recommendations report will be produced, consulted on and presented to stakeholders and the Council Planning Advisory Committee.
- An Official Plan Amendment and Official Plan Schedule (map) will be produced.

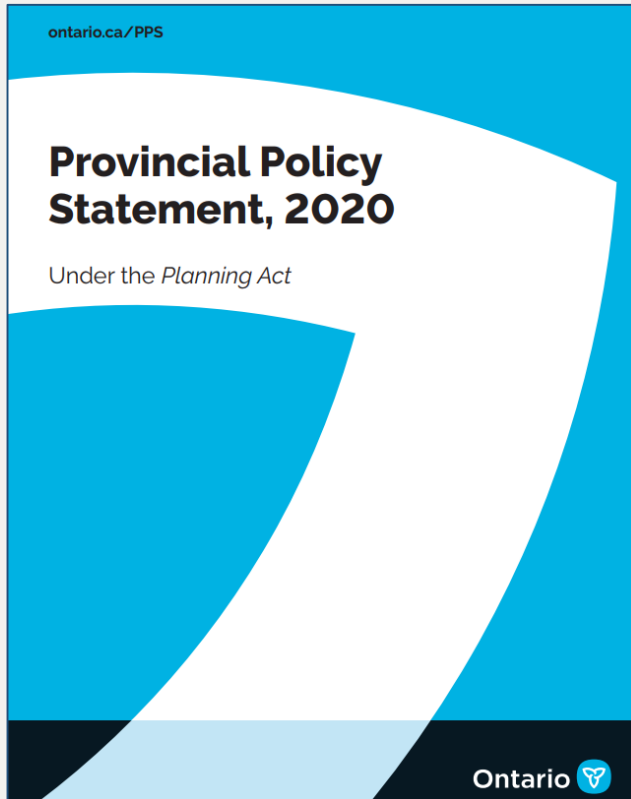
Agricultural Planning Hierarchy



PLANSCAPE

BUILDING COMMUNITY THROUGH PLANNING

Provincial Policy

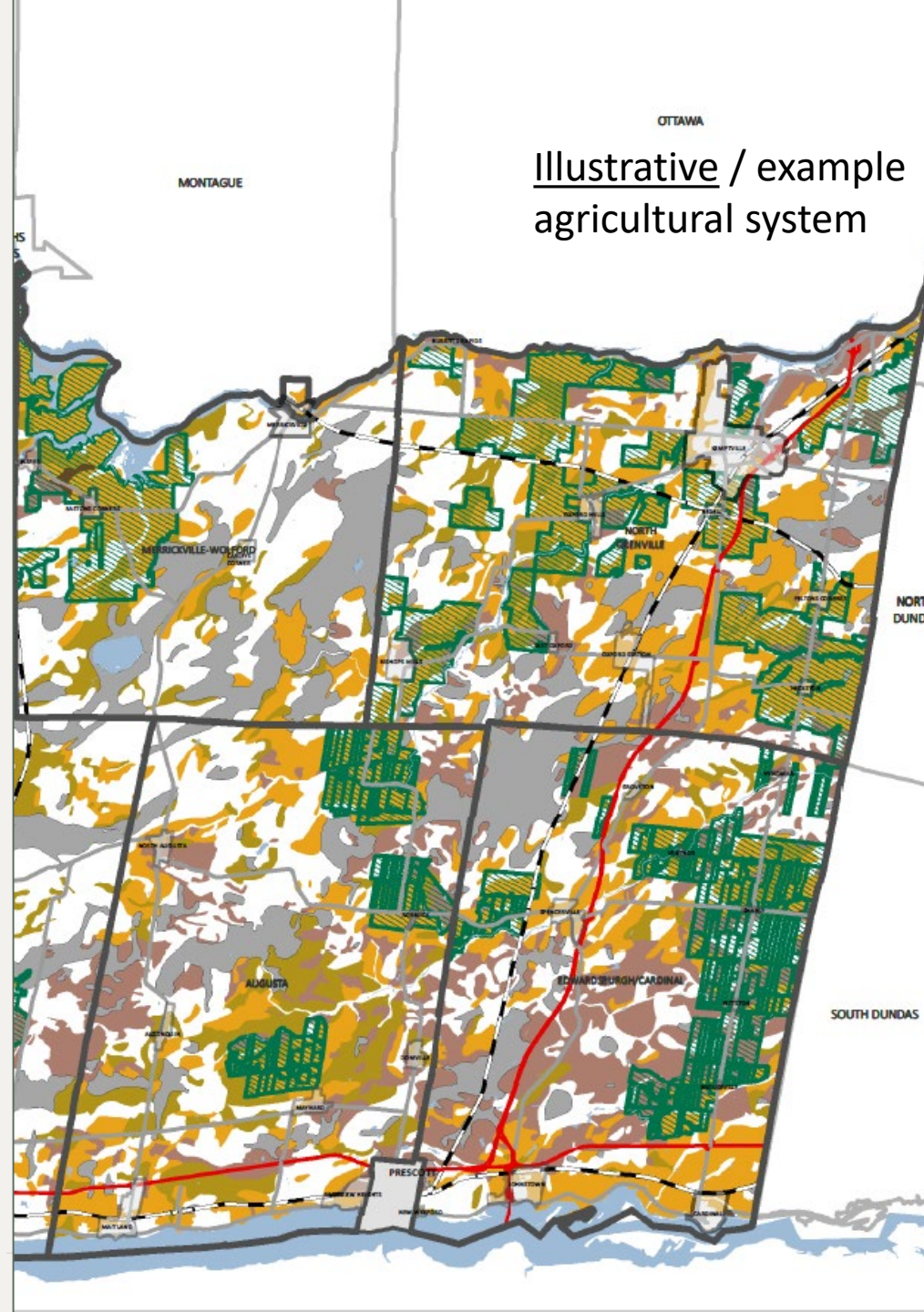


- **Prime agricultural areas** shall be protected for long-term use for agriculture. Prime agricultural areas are areas where prime agricultural lands predominate. Specialty crop areas shall be given the highest priority for protection, followed by Canada Land Inventory Class 1, 2, and 3 lands, and any associated Class 4 through 7 lands within the prime agricultural area, in this order of priority.
- Planning authorities shall designate **prime agricultural areas** and **specialty crop areas** in accordance with guidelines developed by the Province, as amended from time to time.
- Planning authorities are encouraged to use an **agricultural system** approach to maintain and enhance the geographic continuity of the agricultural land base and the functional and economic connections to the agri-food network.

Provincial Policy

Agricultural System: A system comprised of a group of inter-connected elements that collectively create a viable, thriving agricultural sector. It has two components:


- a) An agricultural land base comprised of prime agricultural areas, including specialty crop areas, and rural lands that together create a continuous productive land base for agriculture; and
- a) An agri-food network which includes infrastructure, services, and assets important to the viability of the agri-food sector





COUNTY OFFICIAL PLAN DESIGNATIONS


 PRIME AGRICULTURAL AREA

CANADA LAND INVENTORY (CLI)

 CLASS 1
SOILS IN THIS CLASS HAVE NO SIGNIFICANT LIMITATIONS IN USE FOR CROPS

 CLASS 2
SOILS IN THIS CLASS HAVE MODERATE LIMITATIONS THAT RESTRICT THE RANGE OF CROPS OR REQUIRE MODERATE CONSERVATION PRACTICES

 CLASS 3
SOILS IN THIS CLASS HAVE MODERATELY SEVERE LIMITATIONS THAT RESTRICT THE RANGE OF CROPS OR REQUIRE SPECIAL CONSERVATION PRACTICES

 CLASS 4
SOILS IN THIS CLASS HAVE SEVERE LIMITATIONS THAT RESTRICT THE RANGE OF CROPS OR REQUIRE SPECIAL CONSERVATION PRACTICES

 ORGANIC SOILS
NOT PLACED IN CAPABILITY CLASSES

What is a LEAR?



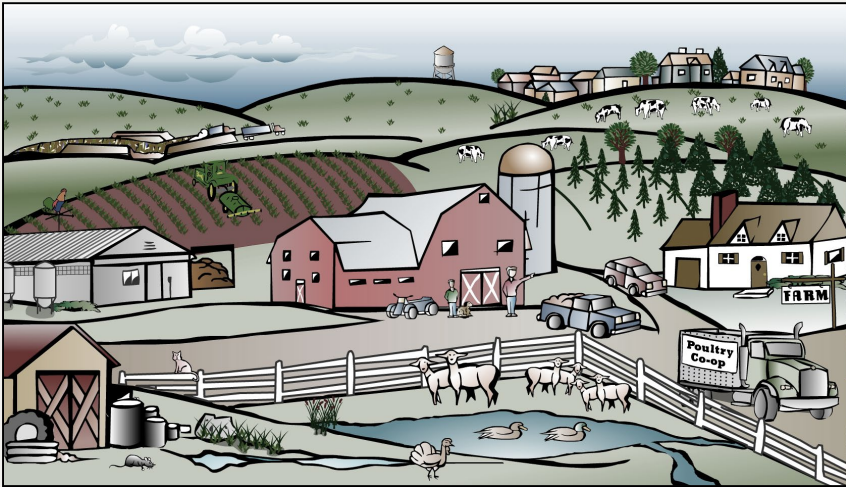
- A LEAR stands for Land Evaluation Area Revue.
- A Numerical rating system designed to determine the long-term agricultural potential of land and assist in identifying prime agricultural areas.
- A planning tool that assists in policy development and land-use decision-making... it is NOT A STAND-ALONE TECHNIQUE.
- A LEAR should be undertaken as apart of a larger agricultural system identification project – it is not intended for use on a site by sit basis.

What is a LEAR?



- The Land Evaluation (LE) portion of the project will be done by The Soil Resources Group, soil specialists who will evaluate and score lands according to the quality of the soil.
- Results of the LE will be mapped.
- The Area Review (AR) portion will be undertaken by Planscape.
- AR factors will be evaluated, assigned a weighted score and then mapped according to the score.
- The lands will be evaluated in 100-acre (40 ha) blocks with non rural areas (settlements, employment lands) removed.
- The results of the LE and AR evaluations will be combined to produce a score for each 100-acre (40 ha) parcel.
- A scoring threshold will be set and the lands that score above the threshold will be mapped as Prime Agriculture.
- The result will be a map of the County agricultural system that represents lands that are viable for agriculture and emphasize the importance of creating a system wherever possible.

Land Evaluation (LE) Study Method



A Guide to the Land Evaluation and Area Review (LEAR) System for Agriculture, OMAFRA, 2002

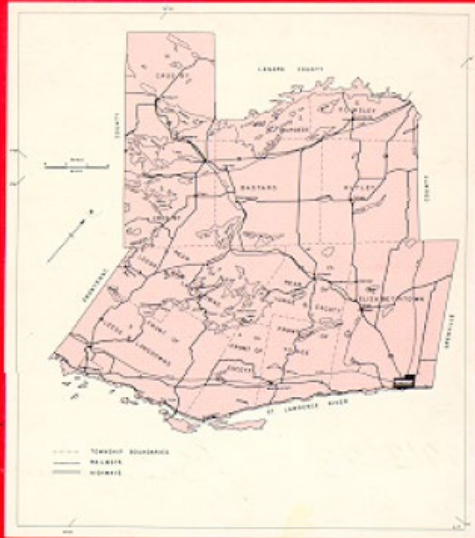
- The LE component provides a method of determining the importance of the study area's soil resources for agriculture.

LE Data Requirements



- Soils of Leeds County, Ontario Soil Survey Report No. 41
- Soil Survey of Grenville County, Ontario Soil Survey Report No. 12
- Soil Capability for Agriculture, Canada Land Inventory (CLI)

SOILS OF LEEDS COUNTY

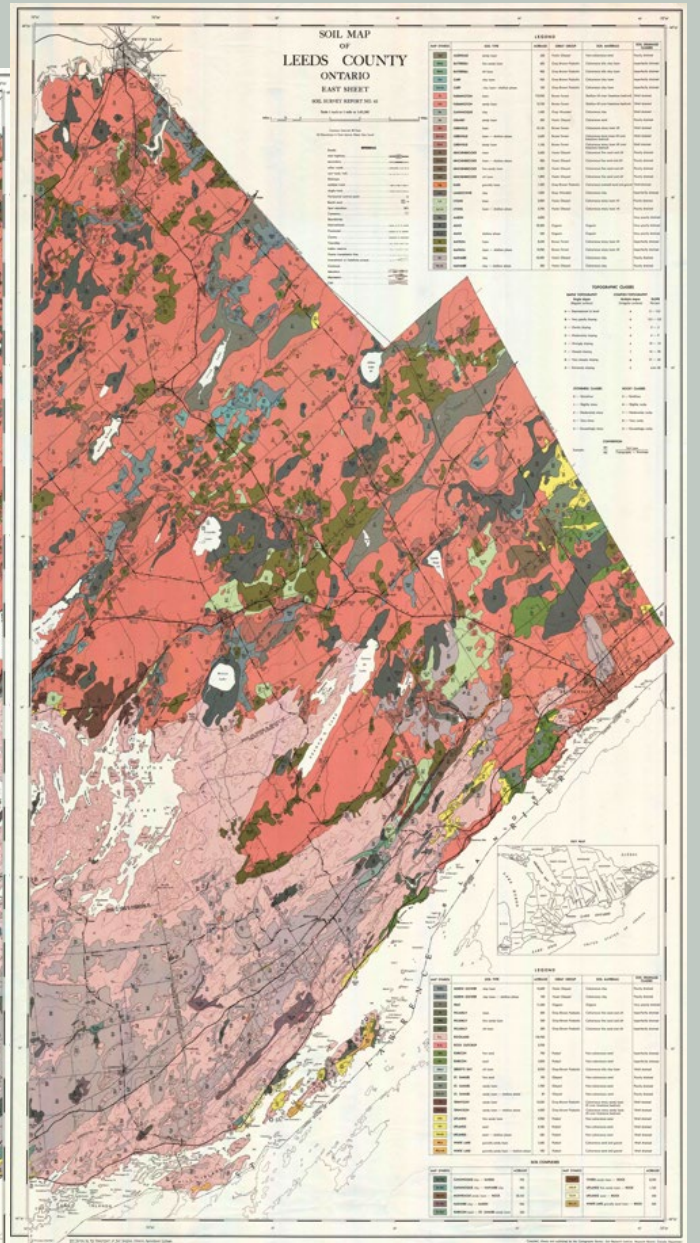
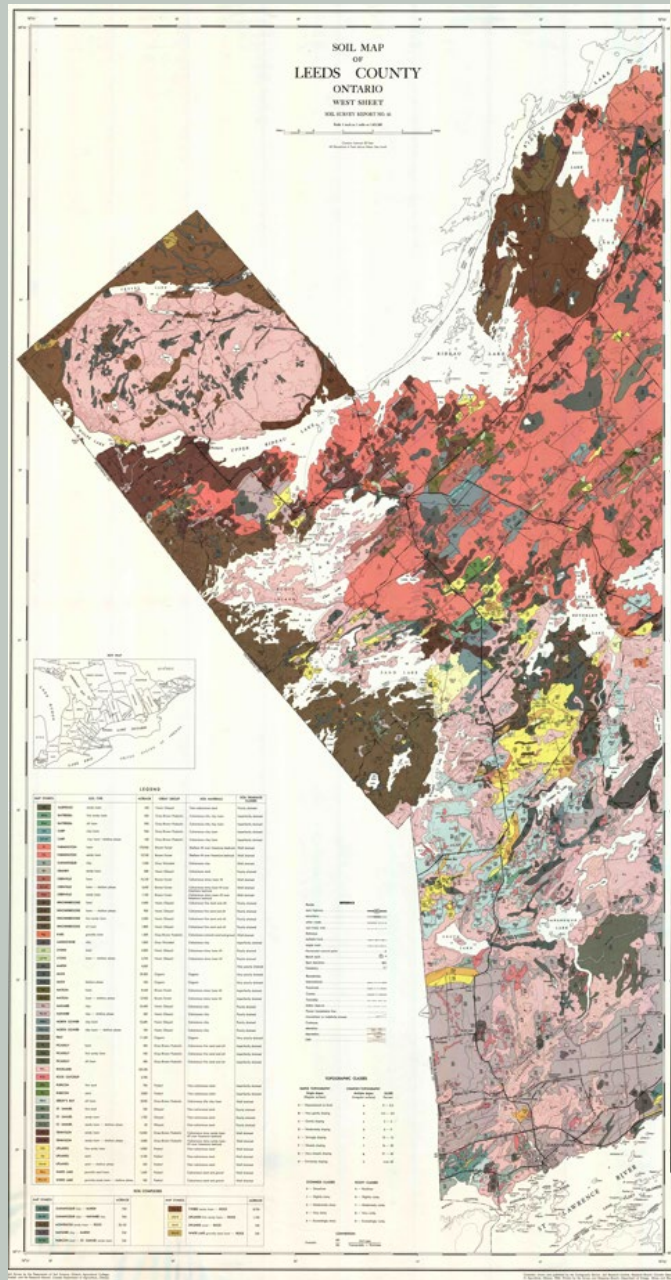


Report No. 41 of the Ontario Soil Survey

Prepared jointly by The Research Branch,
Canada Department of Agriculture and the Ontario Agricultural College
ONTARIO DEPARTMENT OF AGRICULTURE AND FOOD, TORONTO
CANADA DEPARTMENT OF AGRICULTURE, OTTAWA

631.47713 93

SAINTE LAWRENCE RIVER COUNTIES
LEEDS



Agricultural Soil Capability Classification

	Leeds	Grenville
Prime agr land CLI 1-3	50,161 ha (123,950 acres)	59,282 ha (146,488 acres)

- Soil classification interpretation in 1960s
- 7 class system (Canada Land Inventory - CLI)
- Within Leeds soil report, Grenville updated after

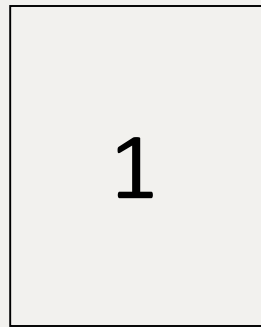


PLANSCAPE
BUILDING COMMUNITY THROUGH PLANNING

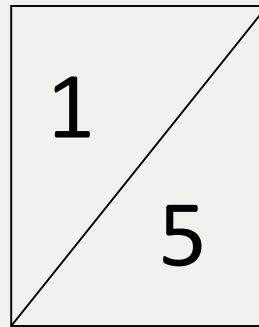
Land Evaluation (LE) Scores

Soil Capability Class	Score (LE)
1	1
2	0.8
3	0.65
4	0.55
5	0.5
6	0.4
7	0

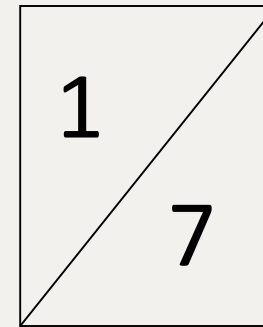
Unit of Evaluation LE Calculation



LE = 1



LE = 0.75



LE = 0.5

LE Score – Weighted Average of LE Values

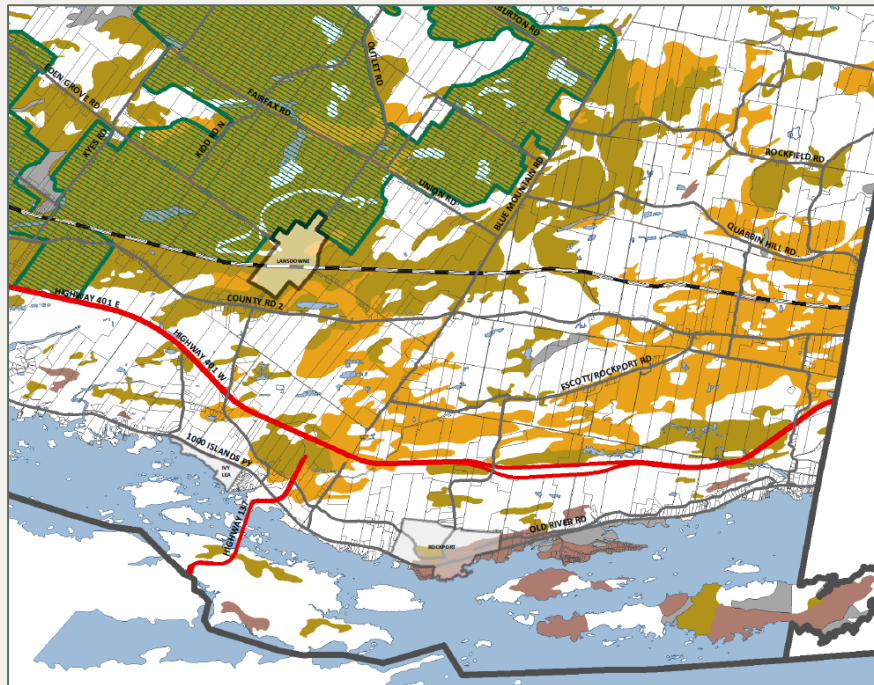
Leeds and Grenville LE Approach



Next Steps:

- LE Scores
- LE Weighting
- Data confirmations
- Draft LE mapping

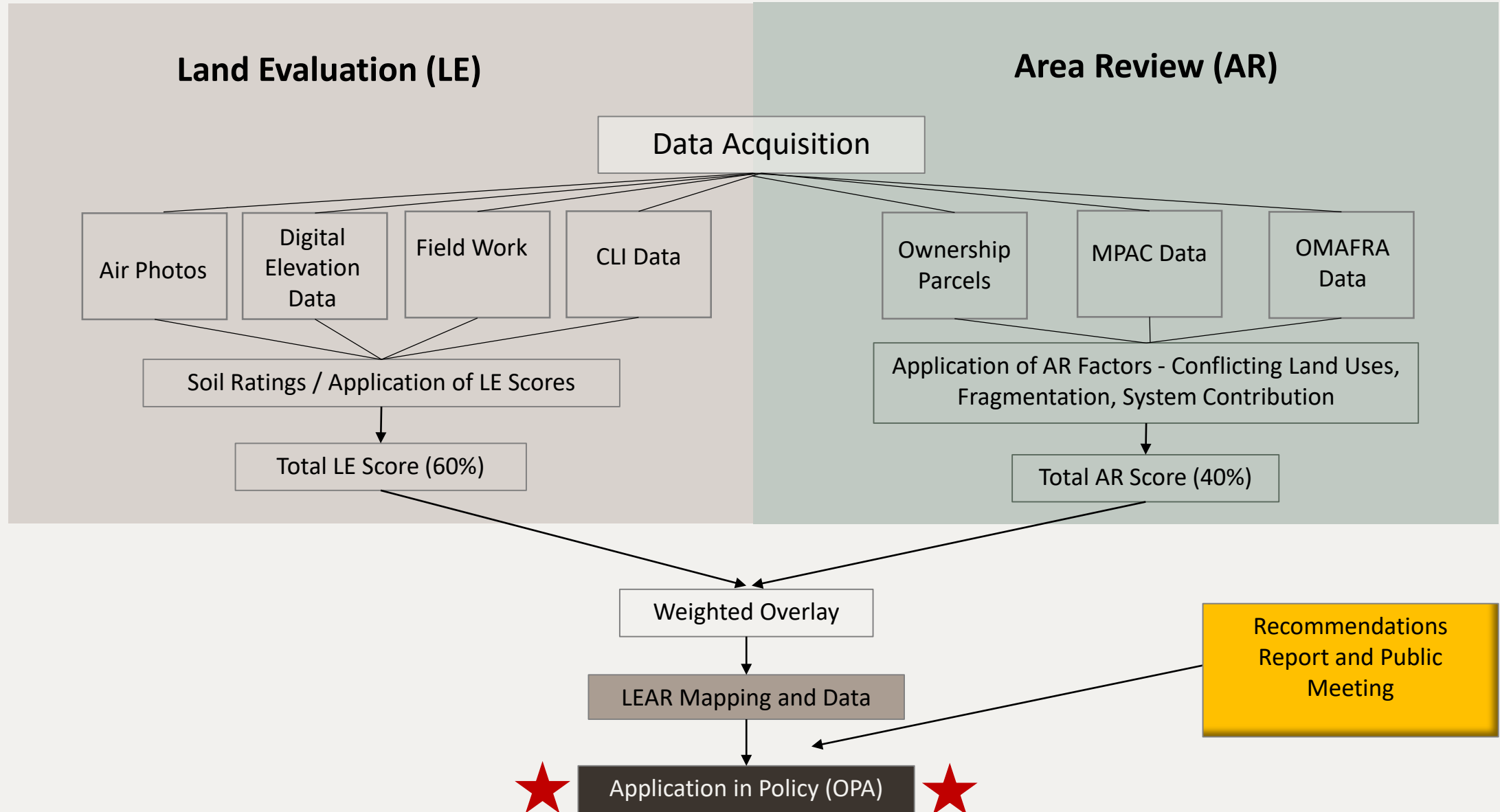
Area Review (AR) Process



Objectives:

- Determine those non-physical factors that affect long-term agricultural production;
- Be consistently applicable within a study area
- Identify and evaluate factors which could include:
 - Conflicting Lands Uses
 - Fragmentation of Land
 - System Contribution

Process Summary



Project Schedule



Consultation



- We encourage the public to attend the public information session / meetings (December 2022, May 2023, September 2023)
- Use the project website to keep up to date on the project and share your ideas with us: [Agriculture Area Review - Leeds & Grenville \(leedsgrenville.com\)](https://leedsgrenville.com)
- An Agricultural Advisory Committee with local municipalities and agricultural representatives has been formed. They will be consulted at key points throughout the project.
- The Counties Planning Advisory Committee will be consulted at key intervals in the project.
- The final report, Official Plan Amendment (OPA) and Schedule will be presented to the public at a Statutory Public Meeting.
- The Final documents, report and mapping will be prepared following the final Statutory Public Meeting and presented to the Planning Advisory Committee and Council for approval.



Thank you for attending!

Please contact the project team by phone or email if you have questions, concerns or suggestions regarding this project.

Elaine Mallory, Planner 1
613-342-3840, ext. 2422
elaine.mallory@uclg.on.ca

