

Limerick Forest INTERPRETIVE CENTRE TRAILS

Limerick Forest is comprised of ~ 6092 hectares of plantation, wetland and natural forest scattered throughout Leeds Grenville. The forest is owned and managed by the Counties in cooperation with the Friends of Limerick Forest.

Limerick Forest is open to a wide range of recreational activities with many trails located throughout the forest. The trails in this immediate area are intended for walking. Those looking for trails more suitable for ATV's, motorcycles or mountain bikes, should proceed south to the two parking lots on Forsythe Road (see map below). Please exercise caution on the trails and respect other forest users. This is your forest so please take care of it and remember:

- Interpretive Centre trails are "non-motorized"
- No Hunting Zone
- All other trails are multi-use
- Dumping or littering is strictly prohibited
- Camping and/or camp fires are by permit only
- Use of the forest is at your own risk

Individuals who may require transportation to the accessible trails are permitted to pass through the entrance gate with a vehicle.

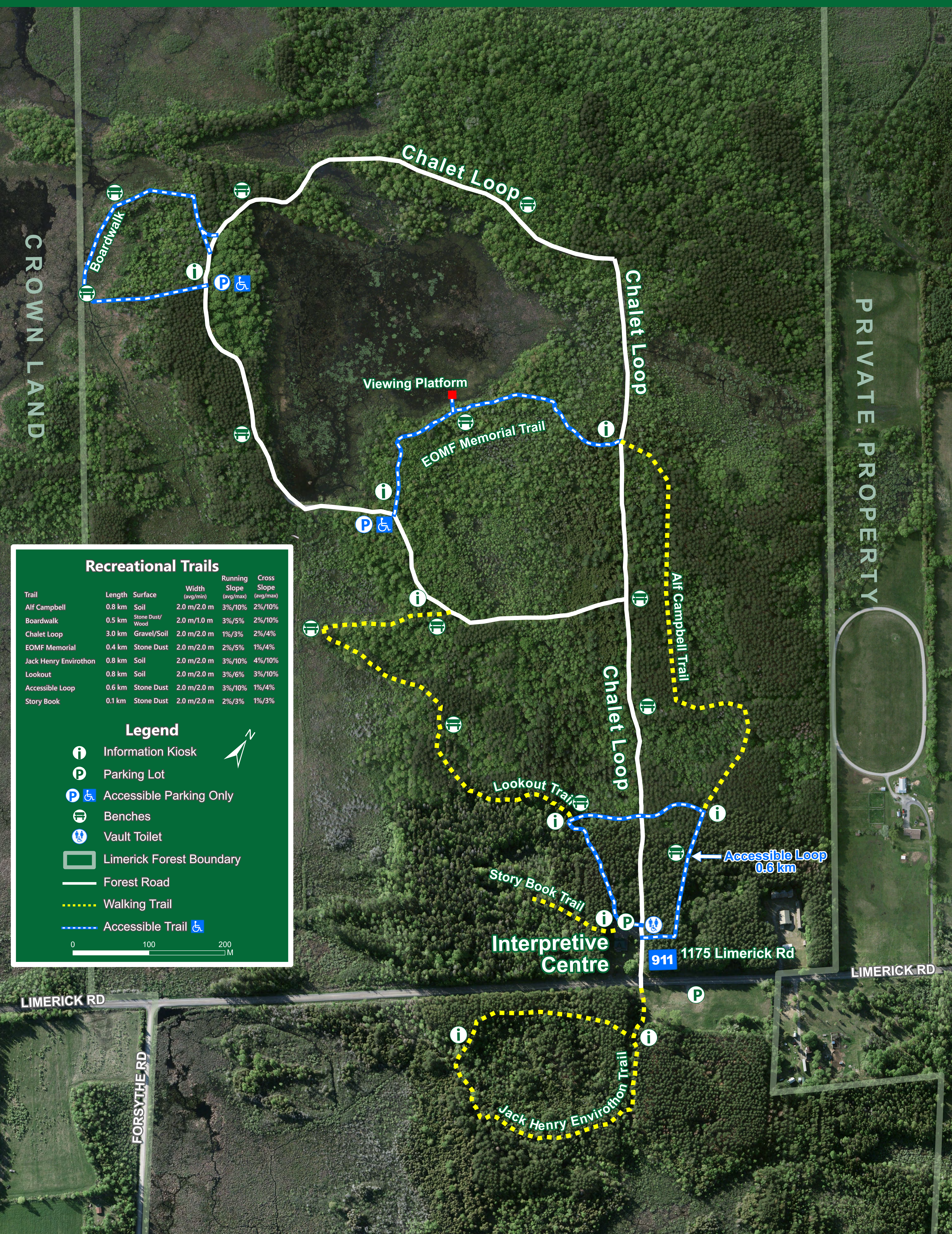
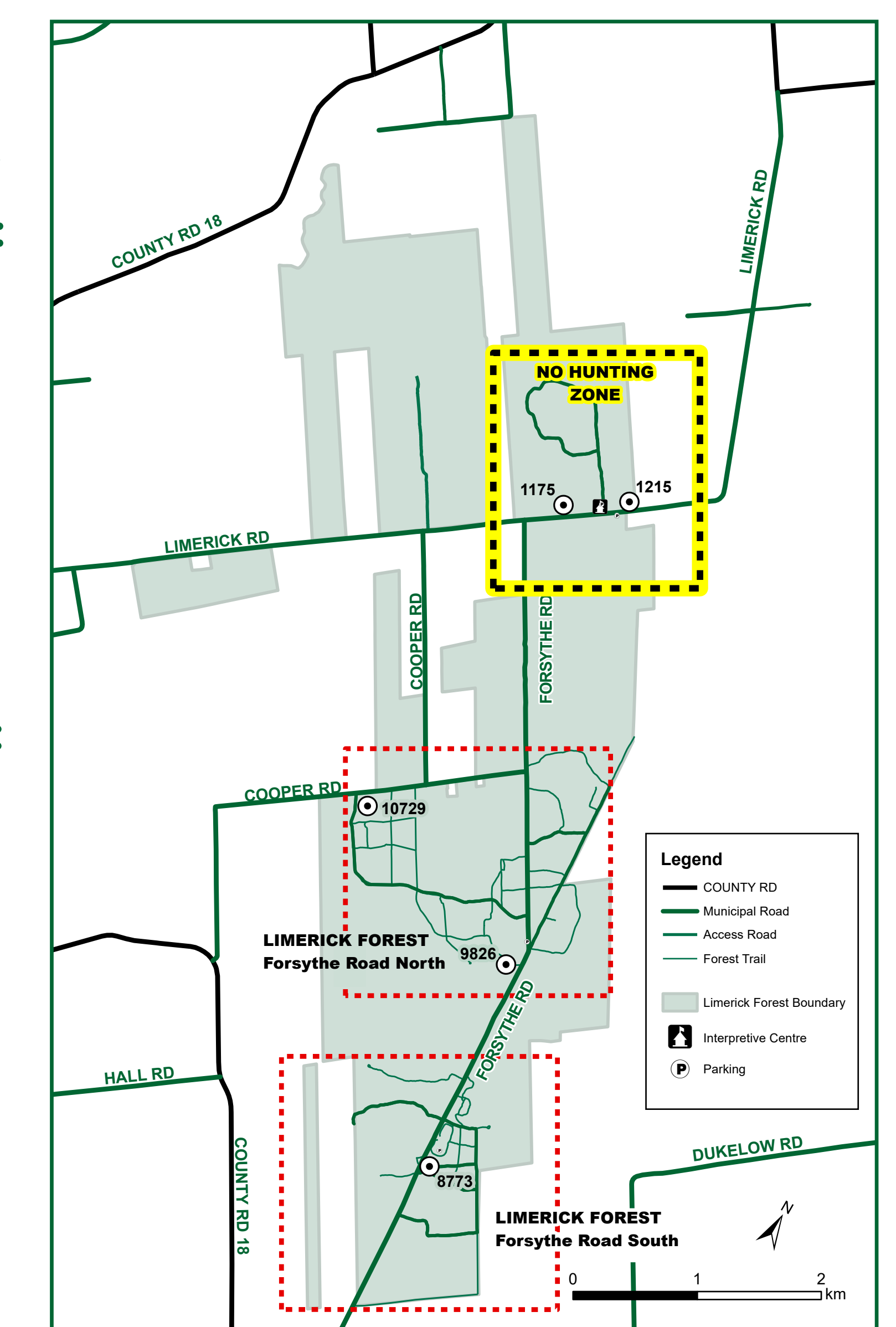
For further assistance or to report any unauthorized activities please contact:

Forest Manager
25 Central Ave West,
Brockville, ON
K6V 4N6
Phone: (613) 342-3840

To report an Emergency or Forest Fire:
Call 911

Your Location is the
Limerick Forest Interpretive Centre,
1175 Limerick Road, North Grenville

www.limerickforest.ca



Recreational Trails					
Trail	Length	Surface	Width (avg/min)	Running Slope (avg/max)	Cross Slope (avg/max)
Alf Campbell	0.8 km	Soil	2.0 m/2.0 m	3%/10%	2%/10%
Boardwalk	0.5 km	Stone Dust/Wood	2.0 m/1.0 m	3%/5%	2%/10%
Chalet Loop	3.0 km	Gravel/Soil	2.0 m/2.0 m	1%/3%	2%/4%
EOMF Memorial	0.4 km	Stone Dust	2.0 m/2.0 m	2%/5%	1%/4%
Jack Henry Envirothon	0.8 km	Soil	2.0 m/2.0 m	3%/10%	4%/10%
Lookout	0.8 km	Soil	2.0 m/2.0 m	3%/6%	3%/10%
Accessible Loop	0.6 km	Stone Dust	2.0 m/2.0 m	3%/10%	1%/4%
Story Book	0.1 km	Stone Dust	2.0 m/2.0 m	2%/3%	1%/3%

Legend

- Information Kiosk
- Parking Lot
- Accessible Parking Only
- Benches
- Vault Toilet
- Limerick Forest Boundary
- Forest Road
- Walking Trail
- Accessible Trail

0 100 200 300 M

