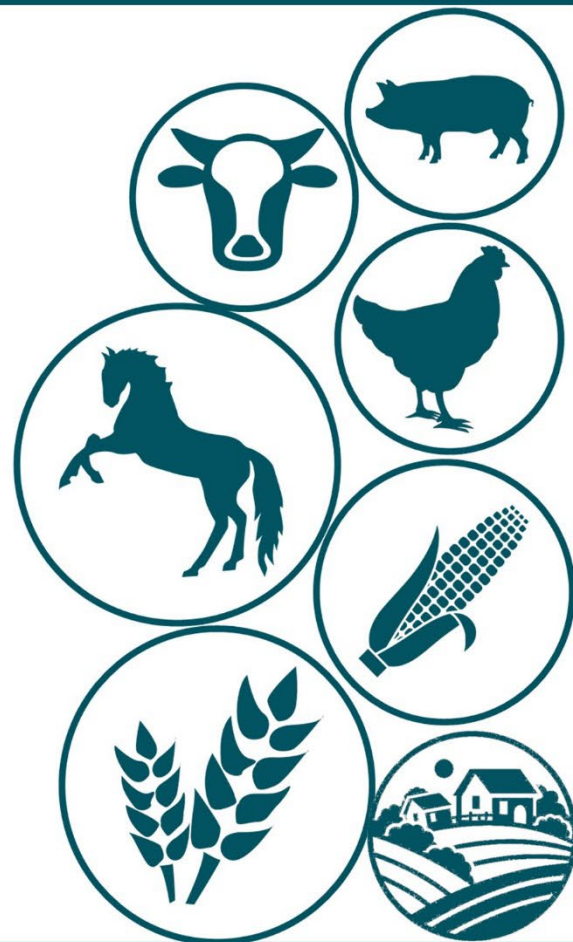




# THE UNITED COUNTIES OF LEEDS and GRENVILLE

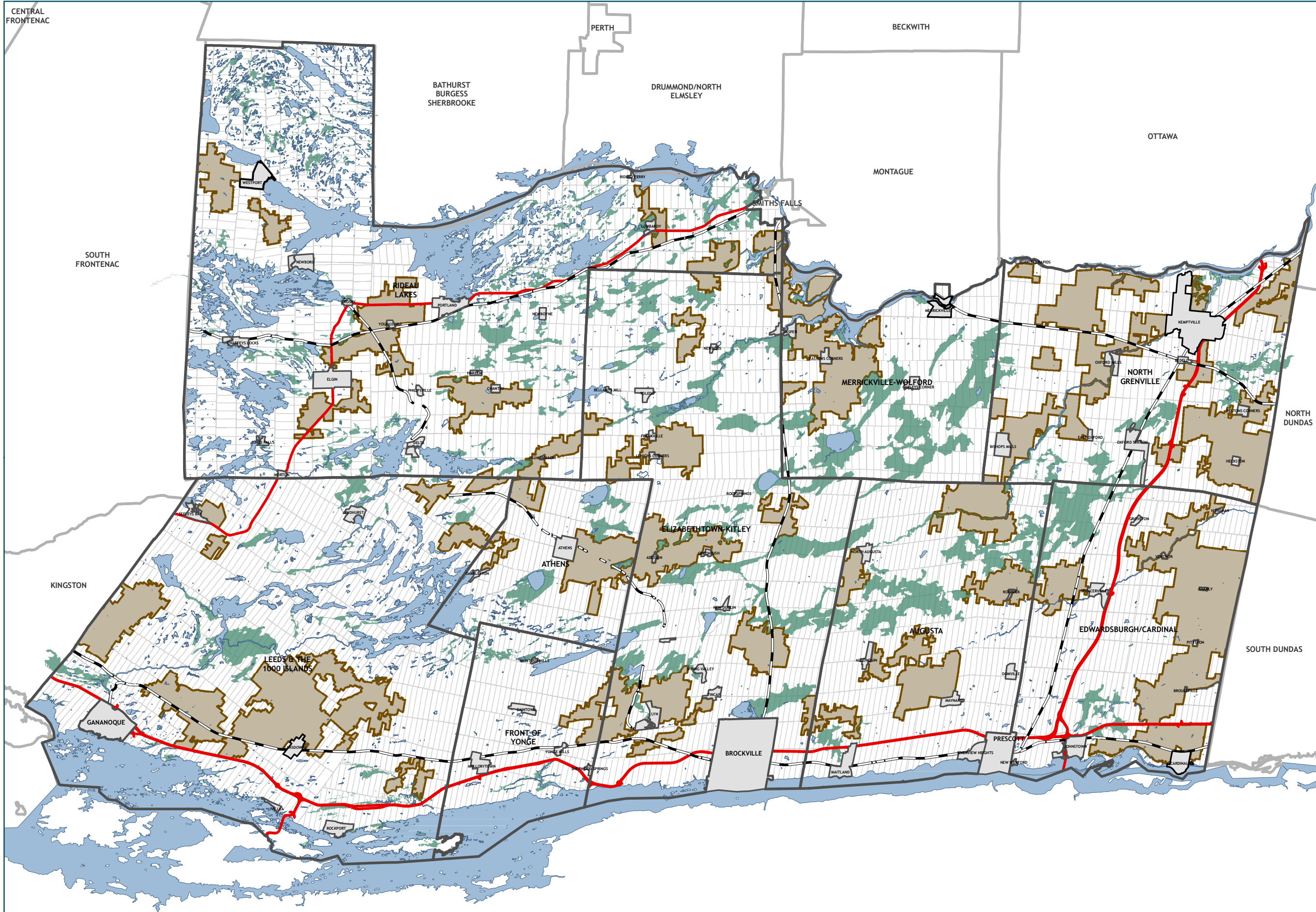
AGRICULTURAL AREA REVIEW STUDY

APPENDIX C - AGRICULTURAL AREA  
RECOMMENDATION MAPS



Leeds  
Grenville

# APPENDIX C1 - COUNY RECOMMENDED AGRICULTURAL AREA MAP

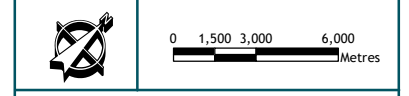


- RECOMMENDATION**
- Prime Agriculture
- NATURAL FEATURES**
- Provincially Significant Wetlands
  - Active/Abandoned Railway

The information displayed on this map has been compiled from various sources. While every effort has been made to accurately depict the information, this map should not be relied on as being a precise indicator of locations.

Copyright United Counties of Leeds and Grenville, 2024.  
All rights reserved.

May not be reproduced without permission.  
This is not survey data.



# APPENDIX C2 - TOWNSHIP OF AUGUSTA - RECOMMENDED AGRICULTURAL AREA MAP



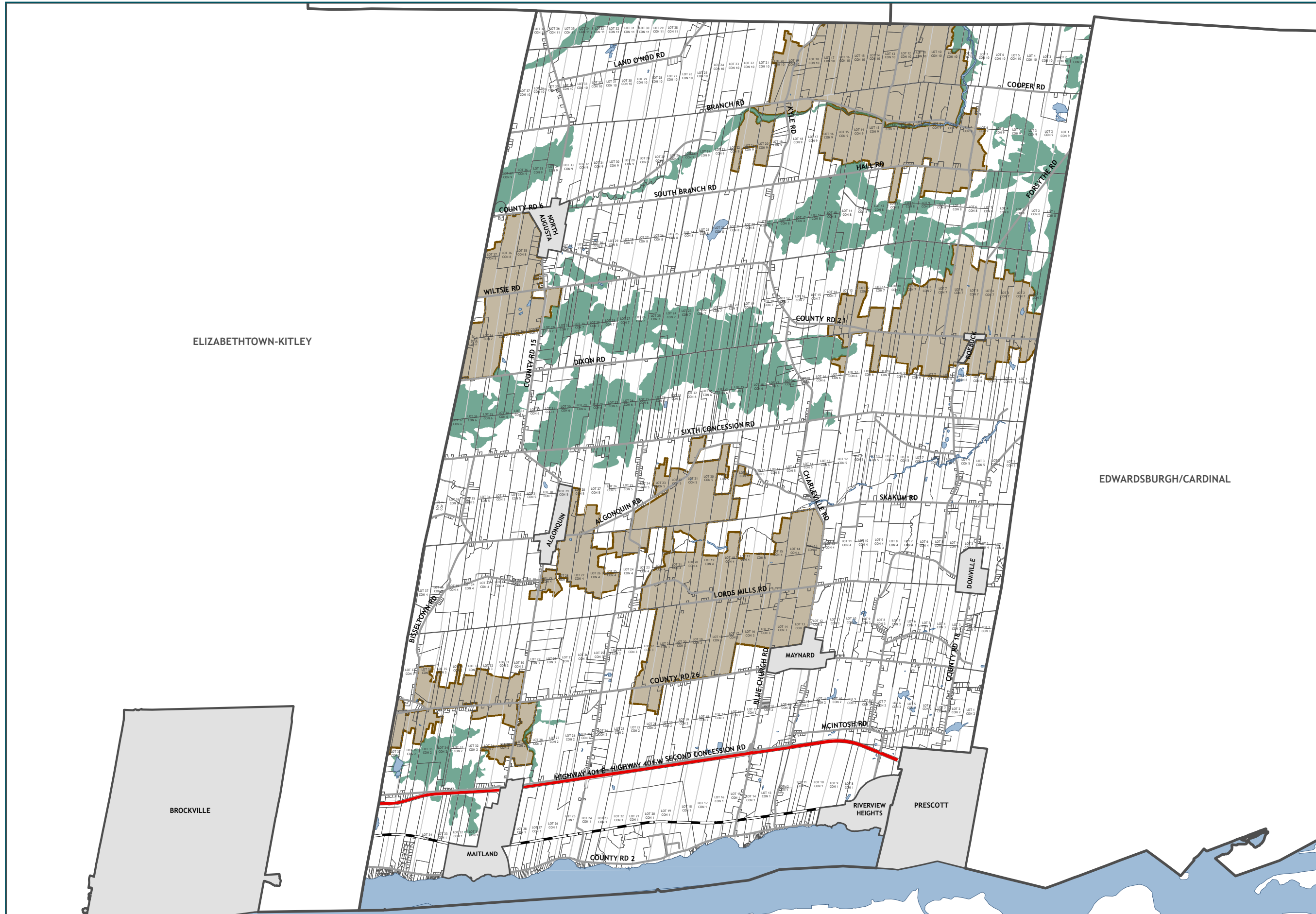
## RECOMMENDATION

Prime Agriculture

## NATURAL FEATURES

Provincially Significant Wetlands

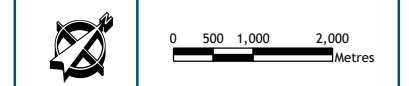
Active/Abandoned Railway



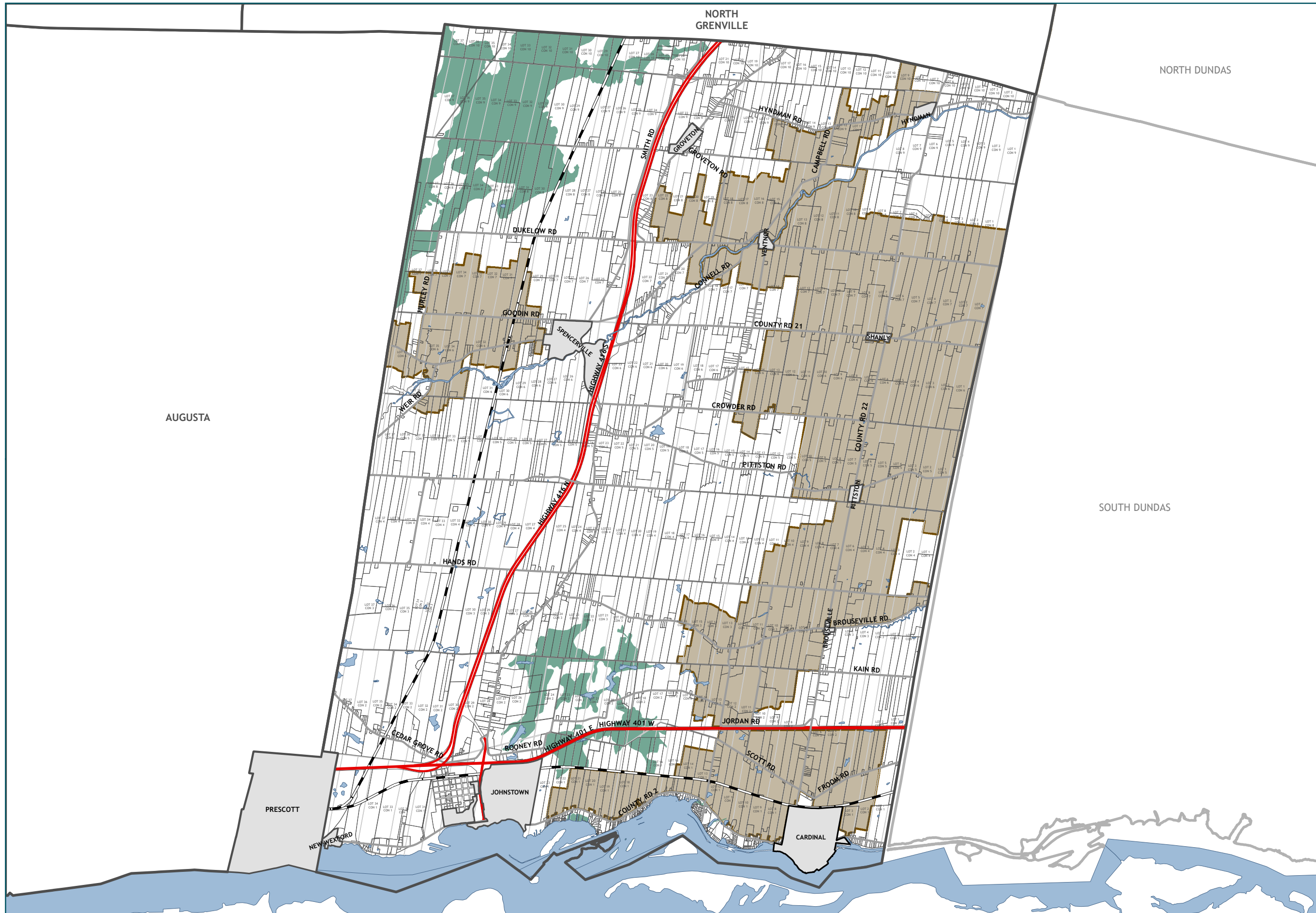
The information displayed on this map has been compiled from various sources. While every effort has been made to accurately depict the information, this map should not be relied on as being a precise indicator of locations.

Copyright United Counties of Leeds and Grenville, 2024. All rights reserved.

May not be reproduced without permission. This is not survey data.



# APPENDIX C3 - TOWNSHIP OF EDWARDSBURGH-CARDINAL - RECOMMENDED AGRICULTURAL AREA MAP



## RECOMMENDATION

Prime Agriculture

## NATURAL FEATURES

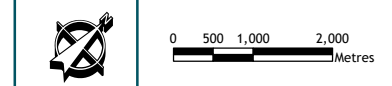
Provincially Significant Wetlands

Active/Abandoned Railway

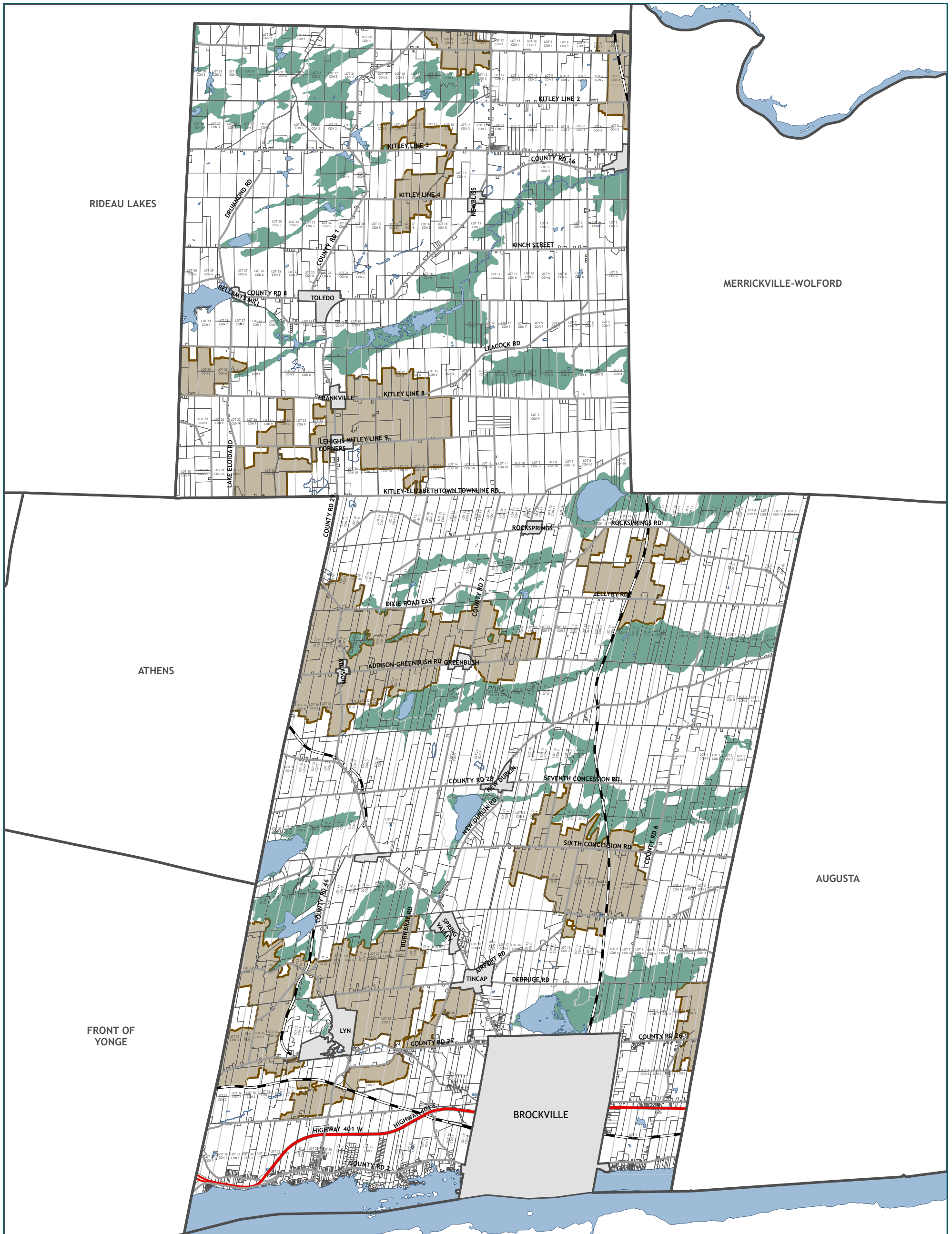
The information displayed on this map has been compiled from various sources. While every effort has been made to accurately depict the information, this map should not be relied on as being a precise indicator of locations.

Copyright  
United Counties of Leeds and Grenville, 2024.  
All rights reserved.

May not be reproduced without permission.  
This is not survey data.



# APPENDIX C4 - TOWNSHIP OF ELIZABETHTOWN-KITLEY - RECOMMENDED AGRICULTURAL AREA MAP



## RECOMMENDATION

Prime Agriculture

## NATURAL FEATURES

Provincially Significant Wetlands

Active/Abandoned Railway



The information displayed on this map has been compiled from various sources. While every effort has been made to accurately depict the information, this map should not be relied on as being a precise indicator of locations.

Copyright  
United Counties of Leeds and Grenville, 2024.  
All rights reserved.

May not be reproduced without permission.  
This is not survey data.



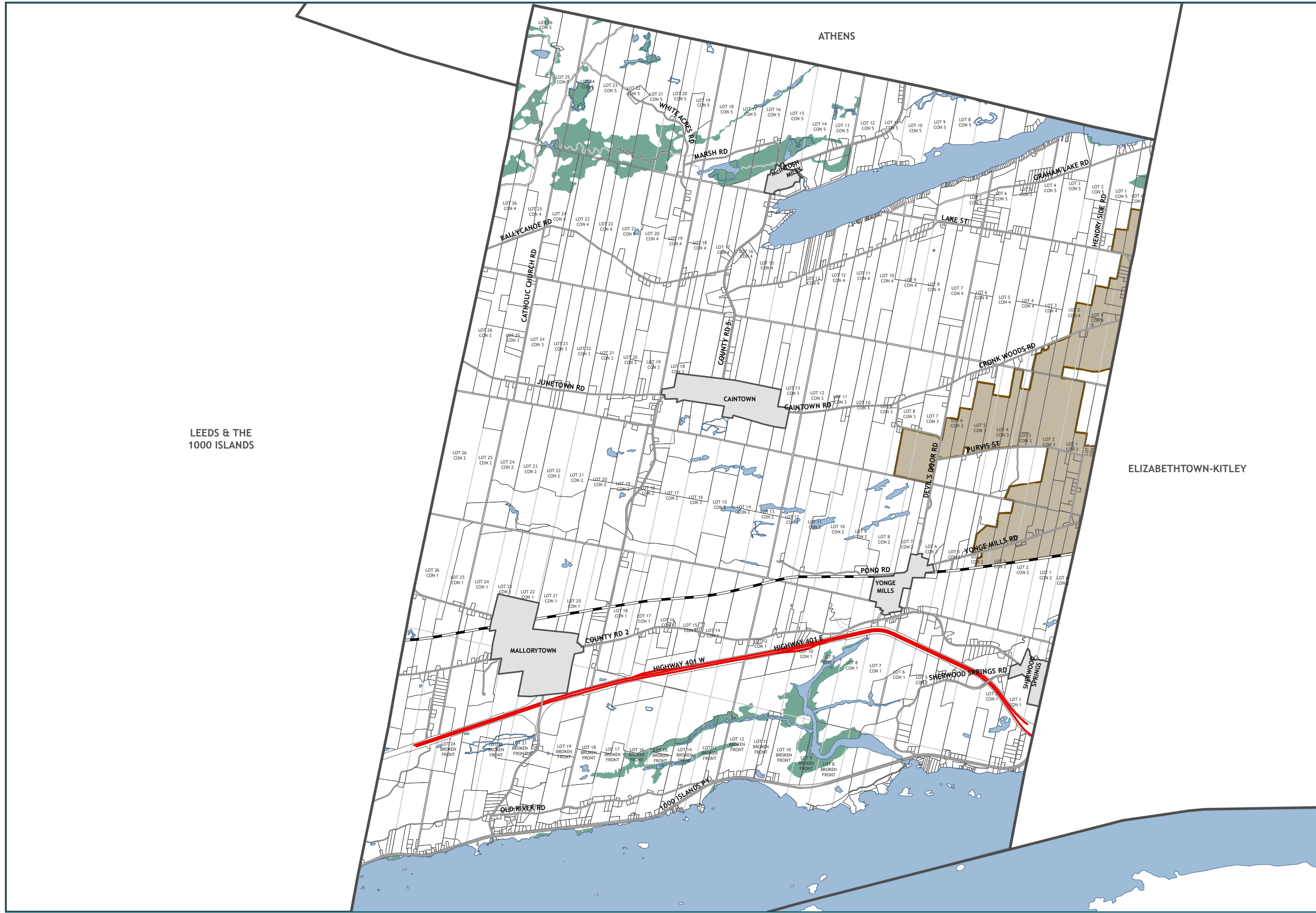
0 750 1,500 3,000  
Metres



# APPENDIX C5 - TOWNSHIP OF FRONT OF YONGE - RECOMMENDED AGRICULTURAL AREA MAP



- RECOMMENDATION**
- Prime Agriculture
- NATURAL FEATURES**
- Provincially Significant Wetlands
  - Active/Abandoned Railway



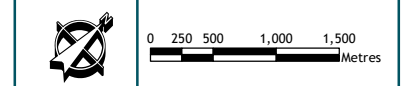
LEEDS & THE 1000 ISLANDS

ELIZABETHTOWN-KITLEY

The information displayed on this map has been compiled from various sources. While every effort has been made to accurately depict the information, this map should not be relied on as being a precise indicator of locations.

Copyright United Counties of Leeds and Grenville, 2024. All rights reserved.

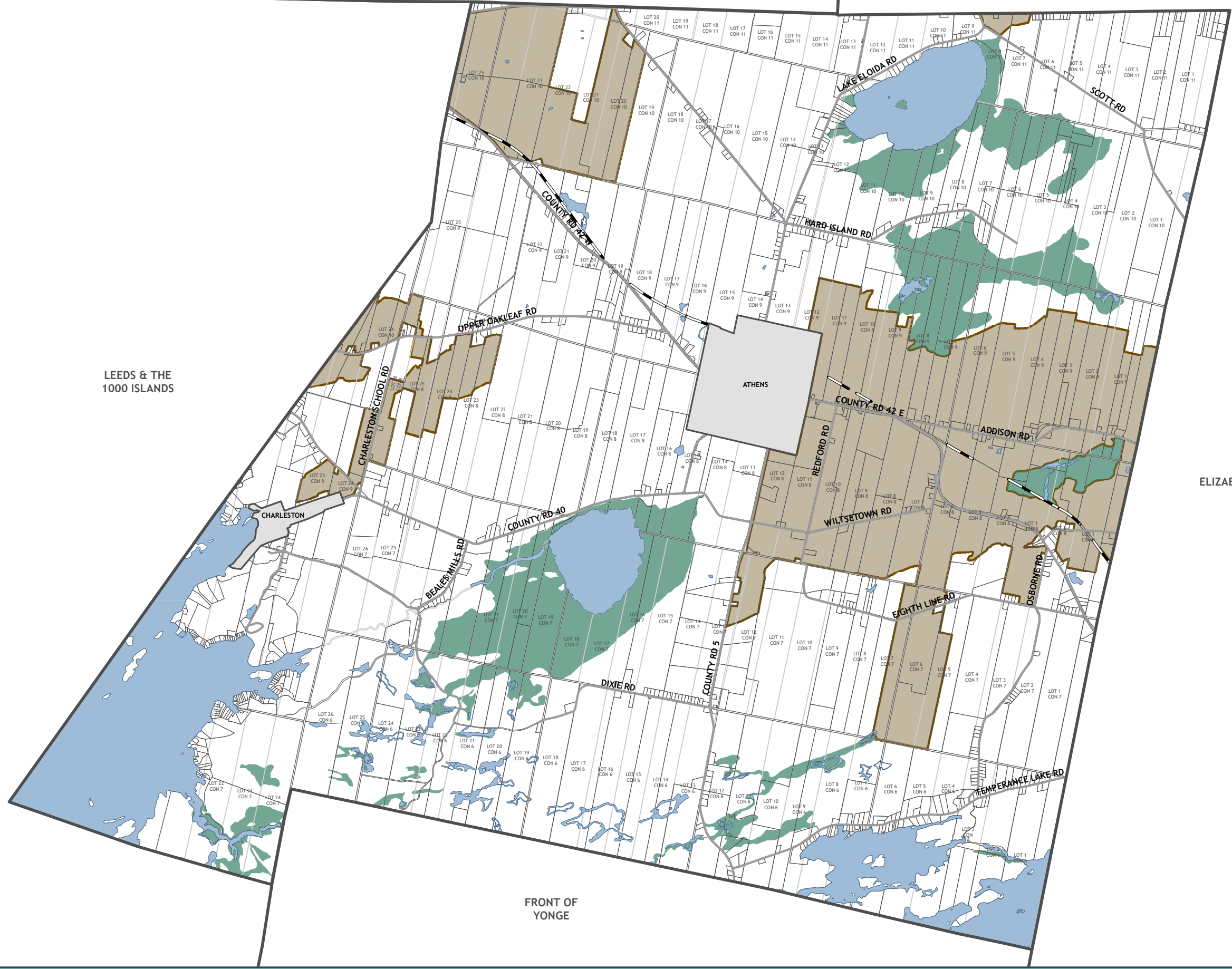
May not be reproduced without permission. This is not survey data.



# APPENDIX C6 - TOWNSHIP OF ATHENS - RECOMMENDED AGRICULTURAL AREA MAP



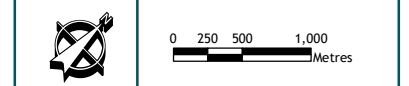
- RECOMMENDATION**
- Prime Agriculture
- NATURAL FEATURES**
- Provincially Significant Wetlands
  - Active/Abandoned Railway



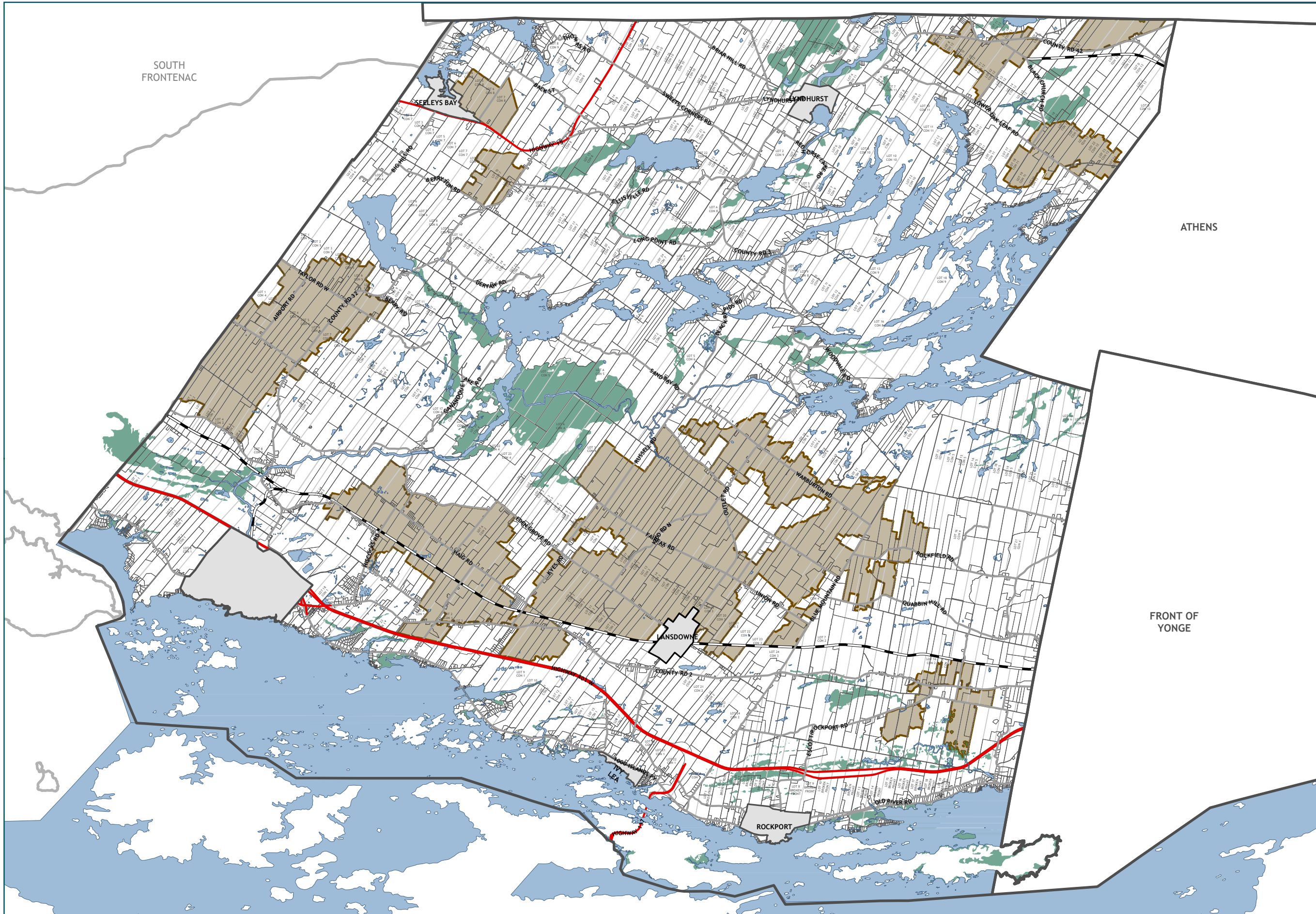
The information displayed on this map has been compiled from various sources. While every effort has been made to accurately depict the information, this map should not be relied on as being a precise indicator of locations.

Copyright  
 United Counties of Leeds and Grenville, 2024.  
 All rights reserved.

May not be reproduced without permission.  
 This is not survey data.



# APPENDIX C7 - TOWNSHIP OF LEEDS and the THOUSAND ISLANDS - RECOMMENDED AGRICULTURAL AREA MAP

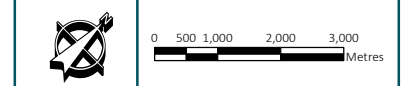


- RECOMMENDATION**
- Prime Agriculture
- NATURAL FEATURES**
- Provincially Significant Wetlands
  - Active/Abandoned Railway

The information displayed on this map has been compiled from various sources. While every effort has been made to accurately depict the information, this map should not be relied on as being a precise indicator of locations.

Copyright United Counties of Leeds and Grenville, 2024. All rights reserved.

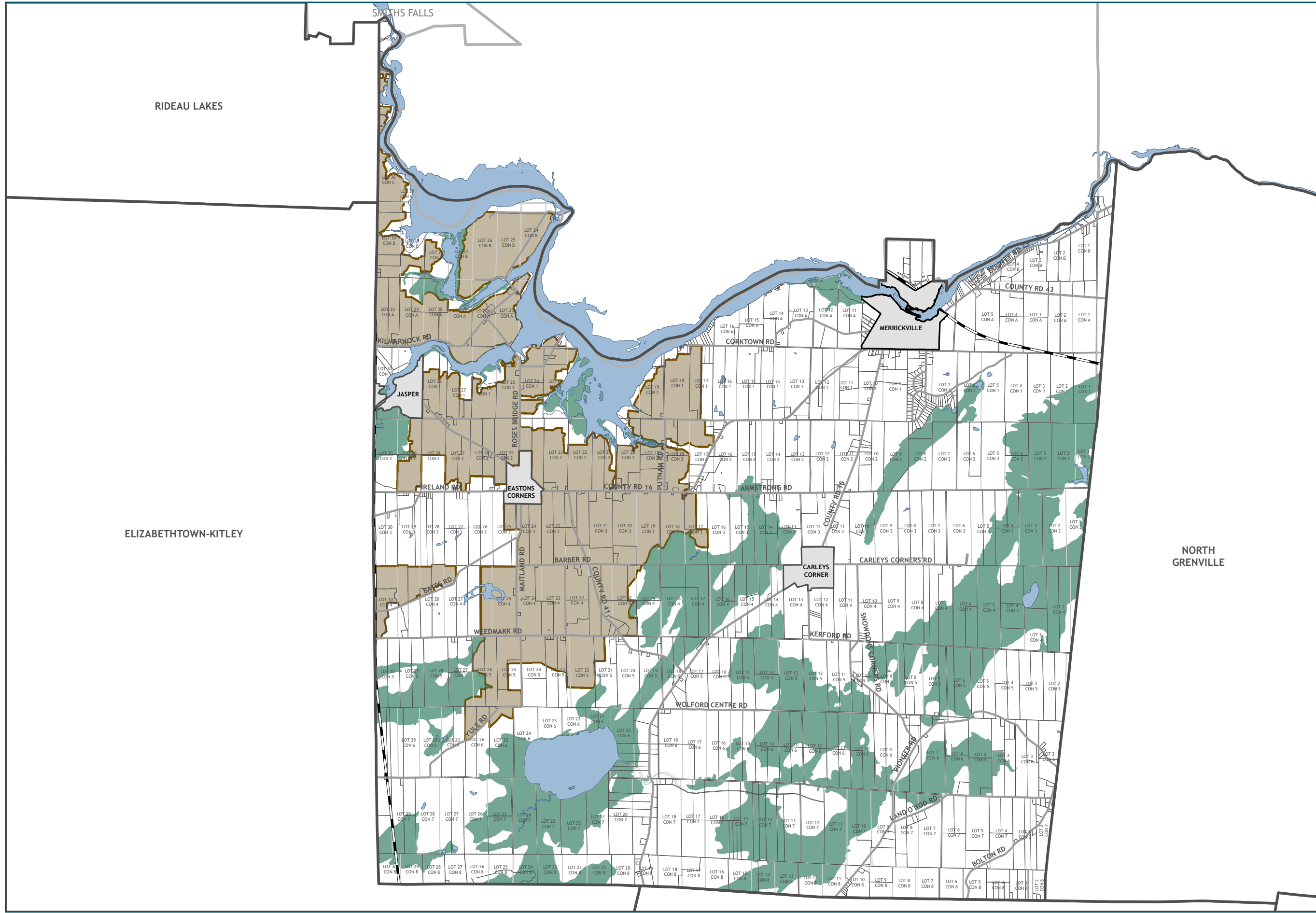
May not be reproduced without permission. This is not survey data.



# APPENDIX C8 - TOWNSHIP OF MERRICKVILLE-WOLFORD - RECOMMENDED AGRICULTURAL AREA MAP



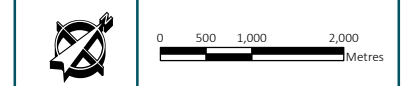
- RECOMMENDATION**
- Prime Agriculture
- NATURAL FEATURES**
- Provincially Significant Wetlands
  - Active/Abandoned Railway



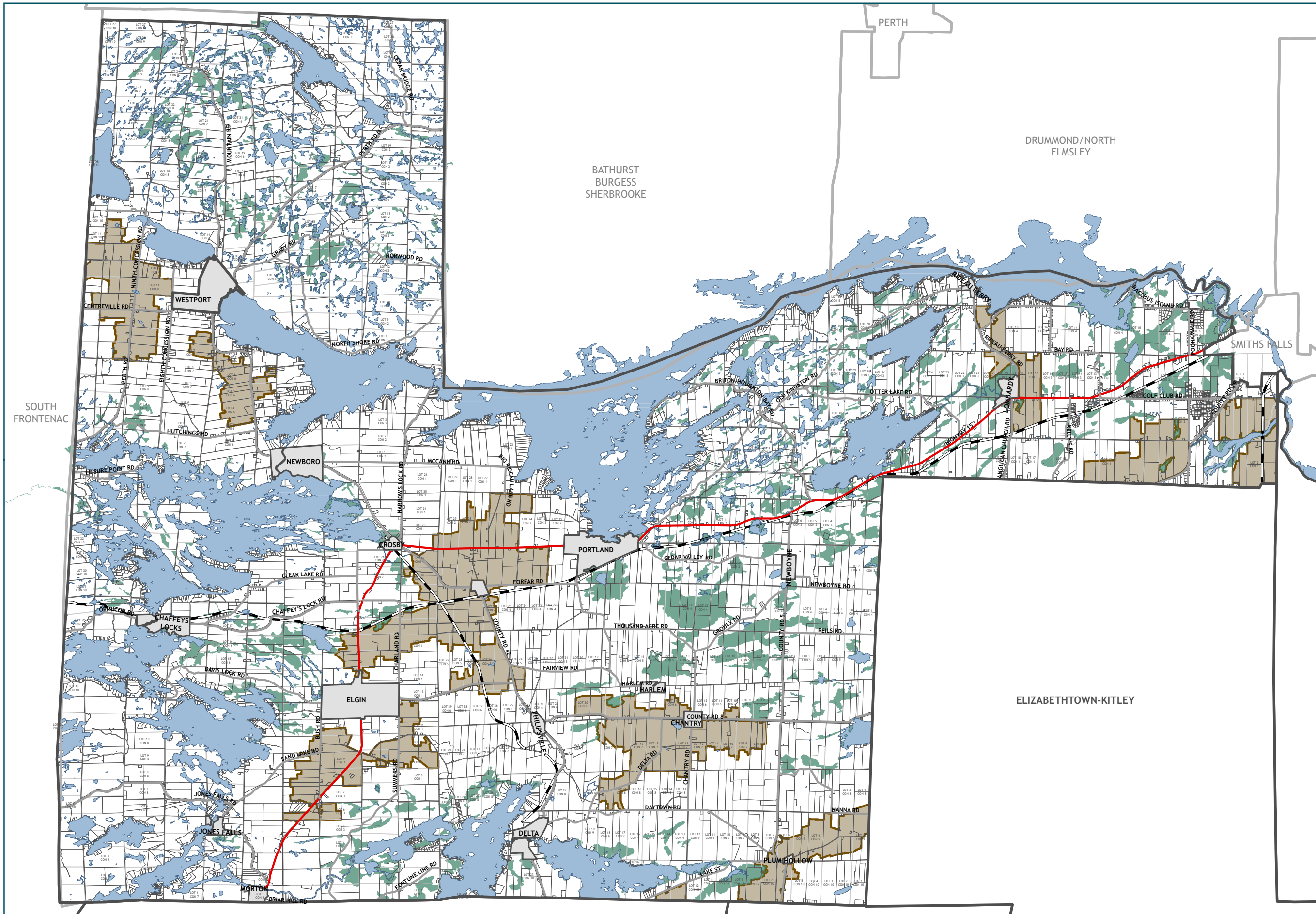
The information displayed on this map has been compiled from various sources. While every effort has been made to accurately depict the information, this map should not be relied on as being a precise indicator of locations.

Copyright  
 United Counties of Leeds and Grenville, 2024.  
 All rights reserved.

May not be reproduced without permission.  
 This is not survey data.



# APPENDIX C9 - TOWNSHIP OF RIDEAU LAKES - RECOMMENDED AGRICULTURAL AREA MAP

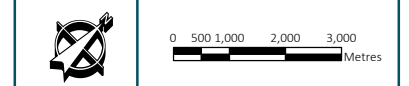


- RECOMMENDATION**
- Prime Agriculture
- NATURAL FEATURES**
- Provincially Significant Wetlands
  - Active/Abandoned Railway

The information displayed on this map has been compiled from various sources. While every effort has been made to accurately depict the information, this map should not be relied on as being a precise indicator of locations.

Copyright United Counties of Leeds and Grenville, 2024. All rights reserved.

May not be reproduced without permission. This is not survey data.



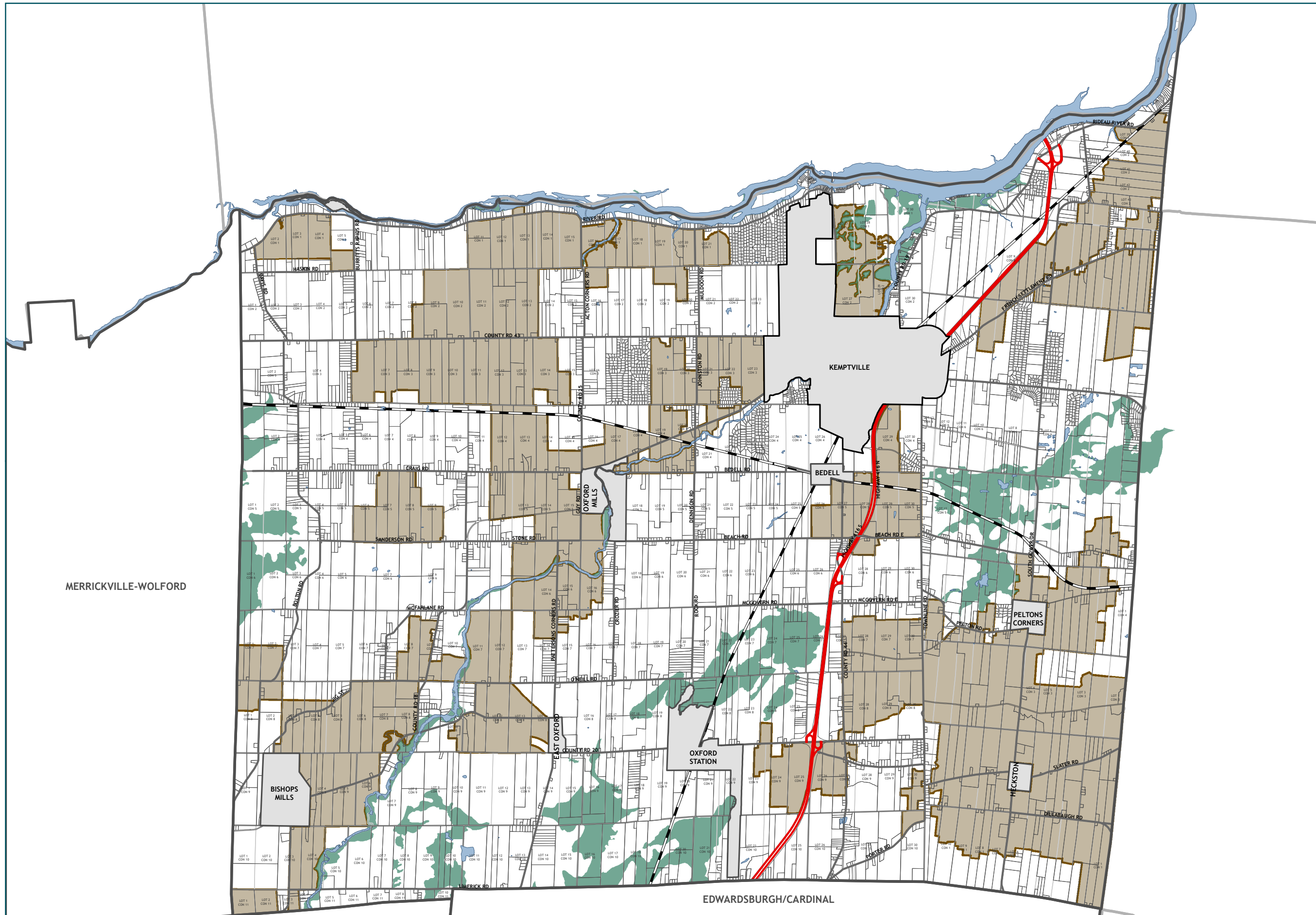
# APPENDIX C10 - MUNICIPALITY OF NORTH GRENVILLE - RECOMMENDED AGRICULTURAL AREA MAP



**RECOMMENDATION**  
 Prime Agriculture

**NATURAL FEATURES**  
 Provincially Significant Wetlands

Active/Abandoned Railway



*The information displayed on this map has been compiled from various sources. While every effort has been made to accurately depict the information, this map should not be relied on as being a precise indicator of locations.*

*Copyright  
 United Counties of Leeds and Grenville, 2024.  
 All rights reserved.*

*May not be reproduced without permission.  
 This is not survey data.*

