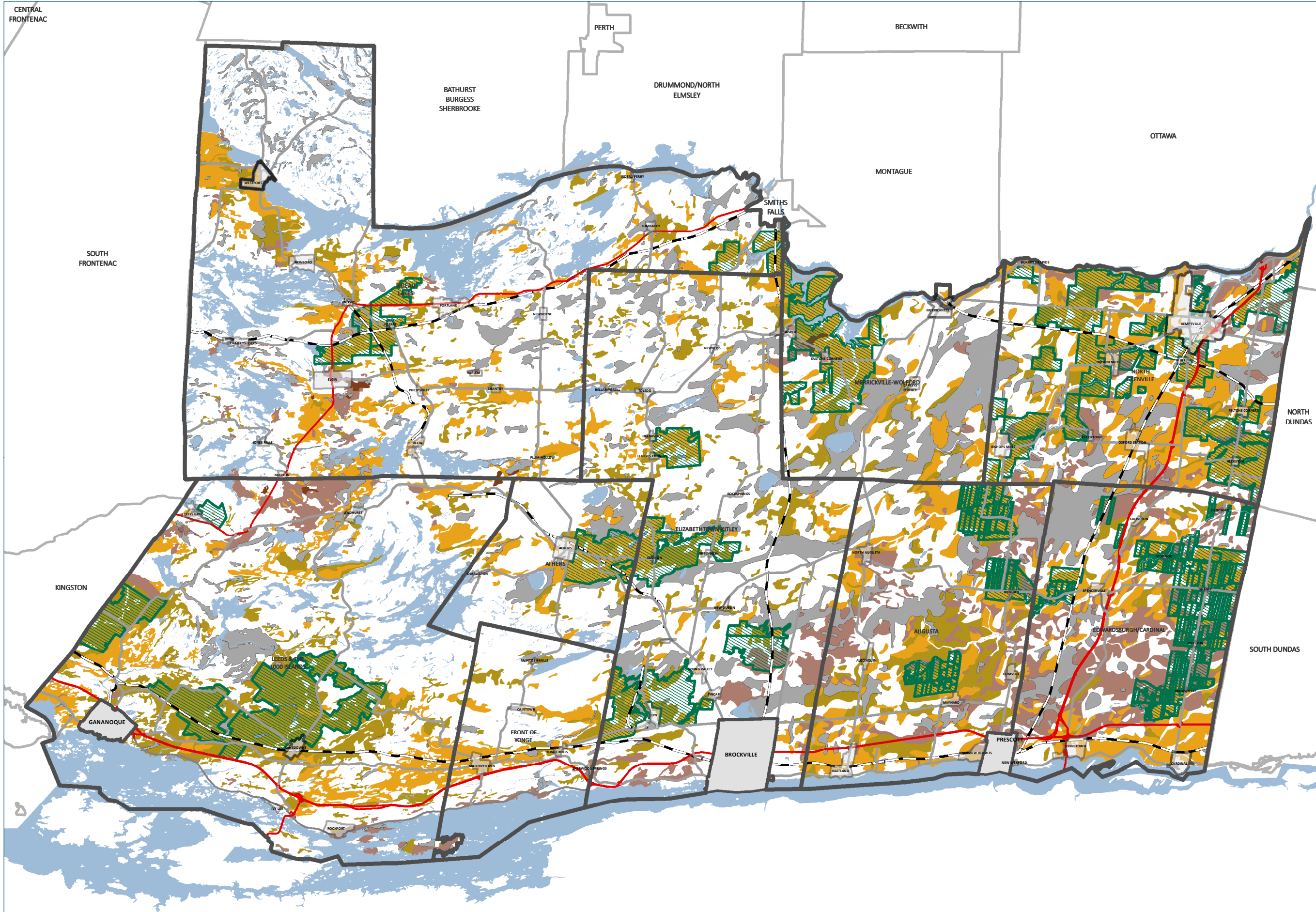


# LEEDS & GRENVILLE CANADA LAND INVENTORY INFORMATION



### COUNTY OFFICIAL PLAN DESIGNATIONS

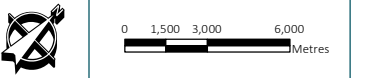
PRIME AGRICULTURAL AREA

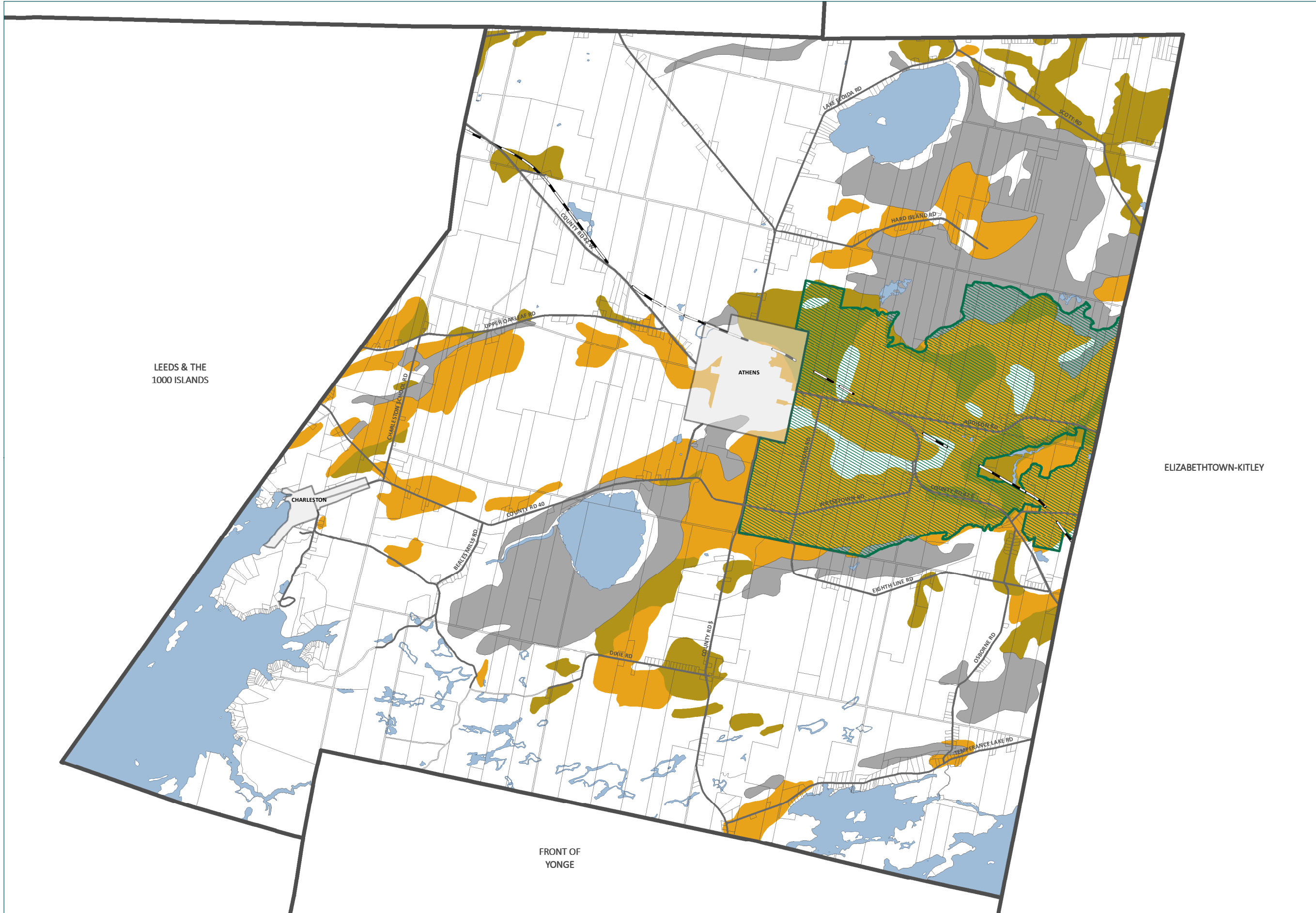
### CANADA LAND INVENTORY (CLI)

- CLASS 1  
SOILS IN THIS CLASS HAVE NO SIGNIFICANT LIMITATIONS IN USE FOR CROPS
- CLASS 2  
SOILS IN THIS CLASS HAVE MODERATE LIMITATIONS THAT RESTRICT THE RANGE OF CROPS OR REQUIRE MODERATE CONSERVATION PRACTICES
- CLASS 3  
SOILS IN THIS CLASS HAVE MODERATELY SEVERE LIMITATIONS THAT RESTRICT THE RANGE OF CROPS OR REQUIRE SPECIAL CONSERVATION PRACTICES
- CLASS 4  
SOILS IN THIS CLASS HAVE SEVERE LIMITATIONS THAT RESTRICT THE RANGE OF CROPS OR REQUIRE SPECIAL CONSERVATION PRACTICES
- ORGANIC SOILS  
NOT PLACED IN CAPABILITY CLASSES



*The information displayed on this map has been compiled from various sources. While every effort has been made to accurately depict the information, this map should not be relied on as being a precise indicator of locations. Copyright United Counties of Leeds and Grenville, 2022. All rights reserved. May not be reproduced without permission. This is not survey data.*





COUNTY OFFICIAL PLAN DESIGNATIONS

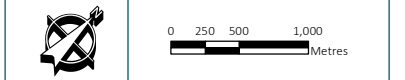
PRIME AGRICULTURAL AREA

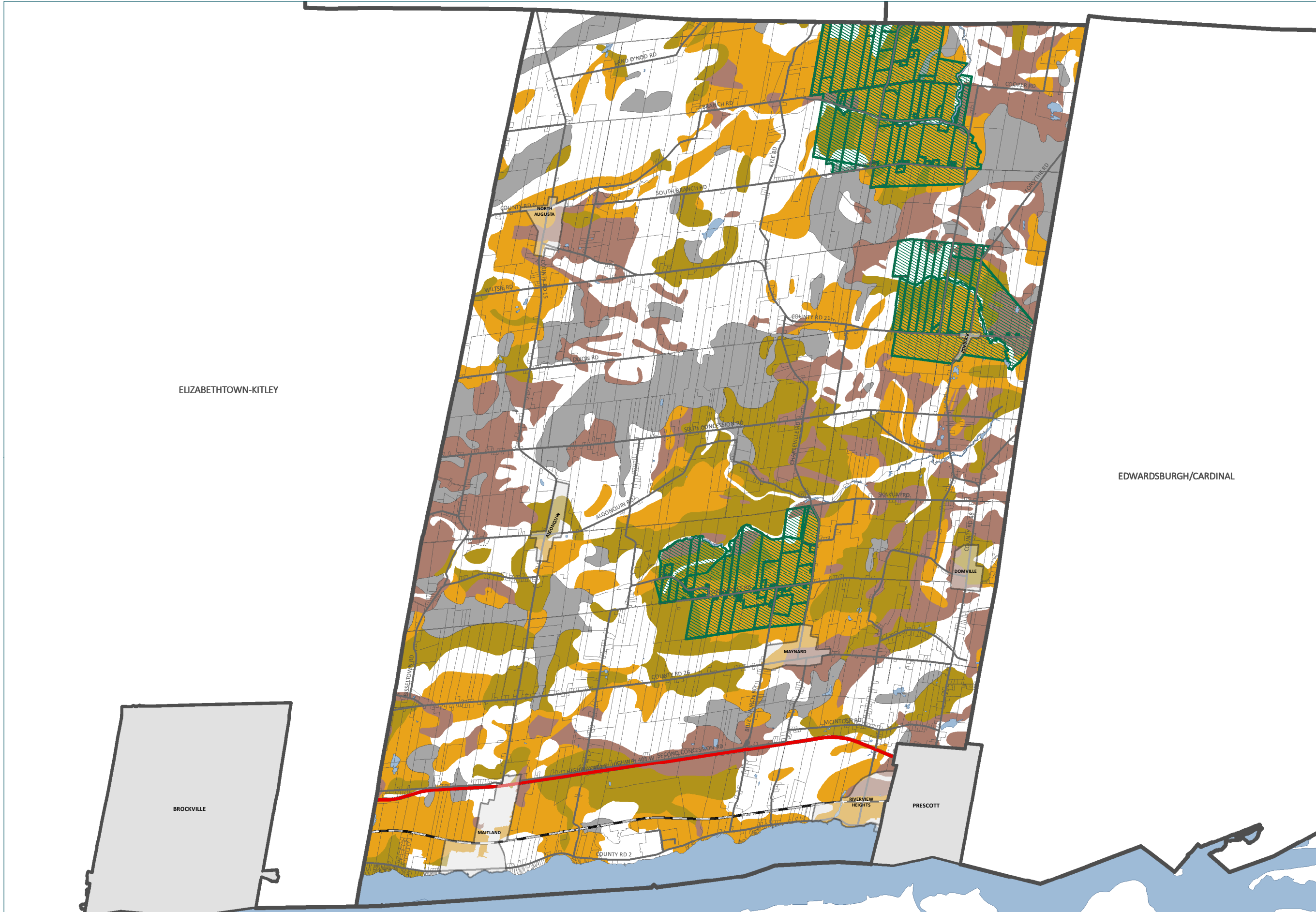
CANADA LAND INVENTORY (CLI)

- CLASS 1  
SOILS IN THIS CLASS HAVE NO SIGNIFICANT LIMITATIONS IN USE FOR CROPS
- CLASS 2  
SOILS IN THIS CLASS HAVE MODERATE LIMITATIONS THAT RESTRICT THE RANGE OF CROPS OR REQUIRE MODERATE CONSERVATION PRACTICES
- CLASS 3  
SOILS IN THIS CLASS HAVE MODERATELY SEVERE LIMITATIONS THAT RESTRICT THE RANGE OF CROPS OR REQUIRE SPECIAL CONSERVATION PRACTICES
- CLASS 4  
SOILS IN THIS CLASS HAVE SEVERE LIMITATIONS THAT RESTRICT THE RANGE OF CROPS OR REQUIRE SPECIAL CONSERVATION PRACTICES
- ORGANIC SOILS  
NOT PLACED IN CAPABILITY CLASSES



The information displayed on this map has been compiled from various sources. While every effort has been made to accurately depict the information, this map should not be relied on as being a precise indicator of locations. Copyright United Counties of Leeds and Grenville, 2022. All rights reserved. May not be reproduced without permission. This is not survey data.





COUNTY OFFICIAL PLAN DESIGNATIONS

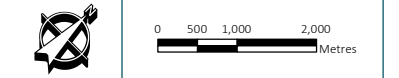
PRIME AGRICULTURAL AREA

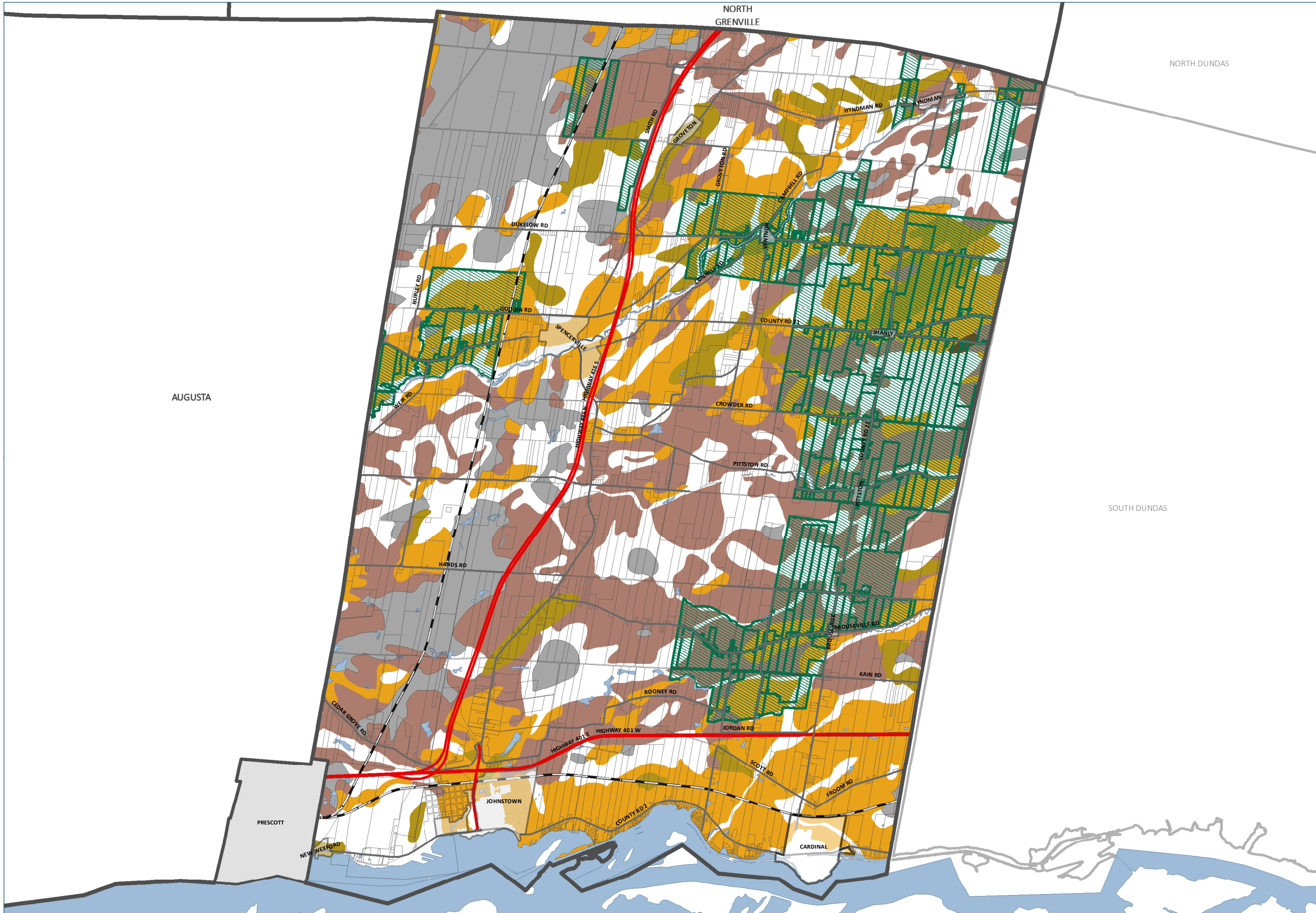
CANADA LAND INVENTORY (CLI)

- CLASS 1**  
SOILS IN THIS CLASS HAVE NO SIGNIFICANT LIMITATIONS IN USE FOR CROPS
- CLASS 2**  
SOILS IN THIS CLASS HAVE MODERATE LIMITATIONS THAT RESTRICT THE RANGE OF CROPS OR REQUIRE MODERATE CONSERVATION PRACTICES
- CLASS 3**  
SOILS IN THIS CLASS HAVE MODERATELY SEVERE LIMITATIONS THAT RESTRICT THE RANGE OF CROPS OR REQUIRE SPECIAL CONSERVATION PRACTICES
- CLASS 4**  
SOILS IN THIS CLASS HAVE SEVERE LIMITATIONS THAT RESTRICT THE RANGE OF CROPS OR REQUIRE SPECIAL CONSERVATION PRACTICES
- ORGANIC SOILS**  
NOT PLACED IN CAPABILITY CLASSES



The information displayed on this map has been compiled from various sources. While every effort has been made to accurately depict the information, this map should not be relied on as being a precise indicator of locations. Copyright United Counties of Leeds and Grenville, 2022. All rights reserved. May not be reproduced without permission. This is not survey data.





COUNTY OFFICIAL PLAN DESIGNATIONS

PRIME AGRICULTURAL AREA

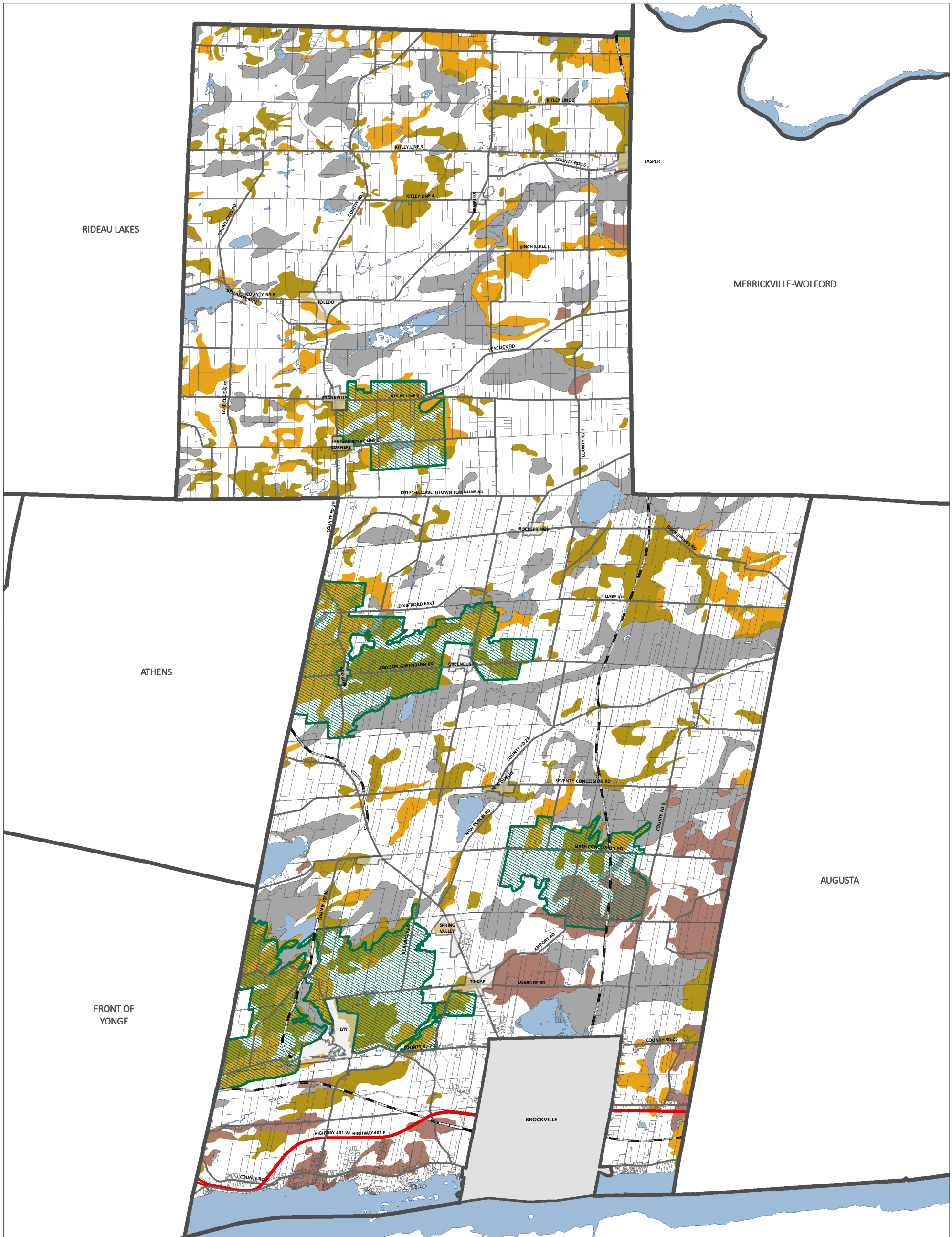
CANADA LAND INVENTORY (CLI)

- CLASS 1**  
SOILS IN THIS CLASS HAVE NO SIGNIFICANT LIMITATIONS IN USE FOR CROPS
- CLASS 2**  
SOILS IN THIS CLASS HAVE MODERATE LIMITATIONS THAT RESTRICT THE RANGE OF CROPS OR REQUIRE MODERATE CONSERVATION PRACTICES
- CLASS 3**  
SOILS IN THIS CLASS HAVE MODERATELY SEVERE LIMITATIONS THAT RESTRICT THE RANGE OF CROPS OR REQUIRE SPECIAL CONSERVATION PRACTICES
- CLASS 4**  
SOILS IN THIS CLASS HAVE SEVERE LIMITATIONS THAT RESTRICT THE RANGE OF CROPS OR REQUIRE SPECIAL CONSERVATION PRACTICES
- ORGANIC SOILS**  
NOT PLACED IN CAPABILITY CLASSES



The information displayed on this map has been compiled from various sources. While every effort has been made to accurately depict the information, this map should not be relied on as being a precise indicator of locations. Copyright United Counties of Leeds and Grenville, 2022. All rights reserved. May not be reproduced without permission. This is not survey data.





COUNTY OFFICIAL PLAN DESIGNATIONS

PRIME AGRICULTURAL AREA

CANADA LAND INVENTORY (CLI)

- CLASS 1  
SOILS IN THIS CLASS HAVE NO SIGNIFICANT LIMITATIONS IN USE FOR CROPS
- CLASS 2  
SOILS IN THIS CLASS HAVE MODERATE LIMITATIONS THAT RESTRICT THE RANGE OF CROPS OR REQUIRE MODERATE CONSERVATION PRACTICES
- CLASS 3  
SOILS IN THIS CLASS HAVE MODERATELY SEVERE LIMITATIONS THAT RESTRICT THE RANGE OF CROPS OR REQUIRE SPECIAL CONSERVATION PRACTICES

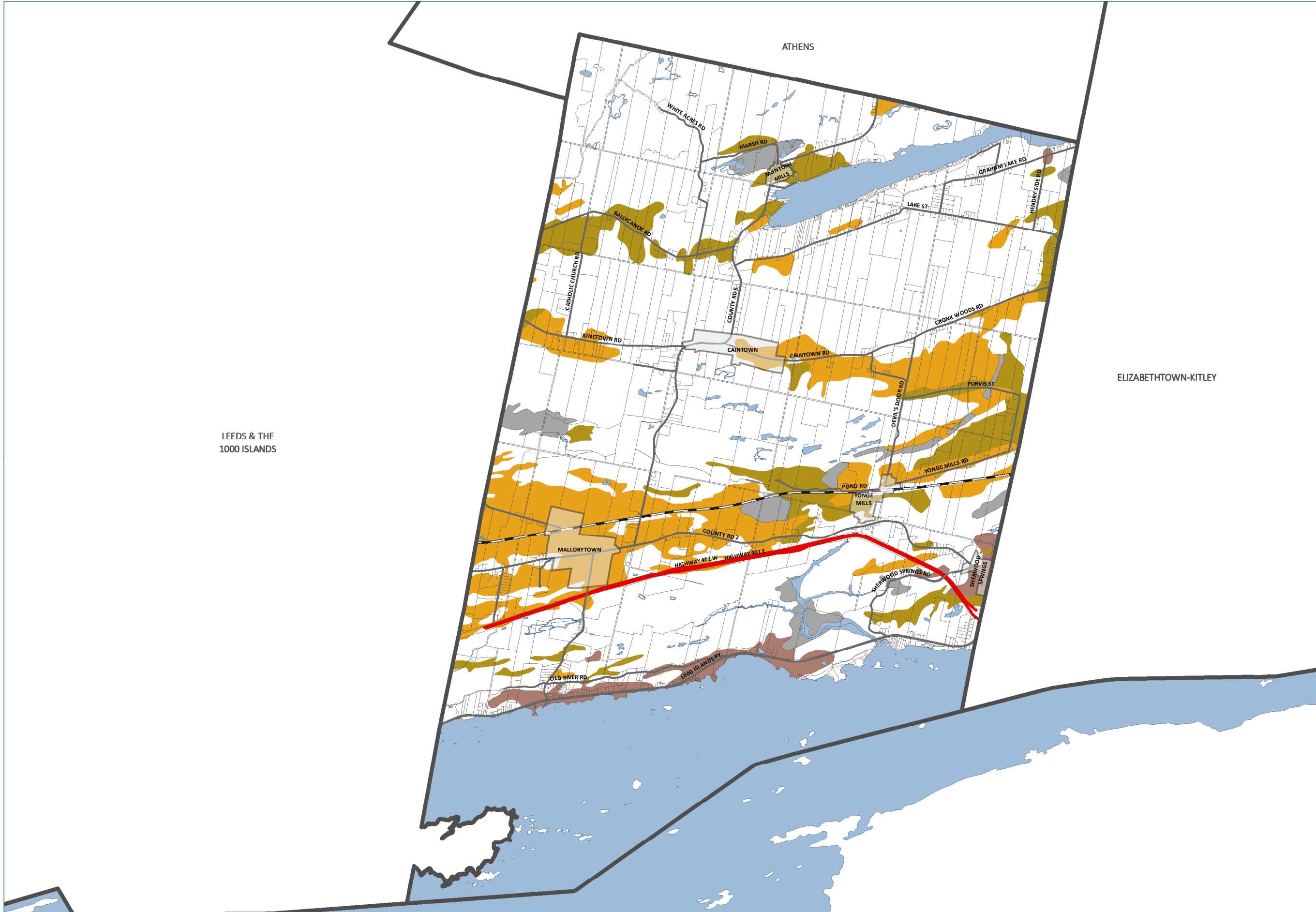
- CLASS 4  
SOILS IN THIS CLASS HAVE SEVERE LIMITATIONS THAT RESTRICT THE RANGE OF CROPS OR REQUIRE SPECIAL CONSERVATION PRACTICES
- ORGANIC SOILS  
NOT PLACED IN CAPABILITY CLASSES

*The information displayed on this map has been compiled from various sources. While every effort has been made to accurately depict the information, this map should not be relied on as being a precise indicator of locations. Copyright United Counties of Leeds and Grenville, 2022. All rights reserved. May not be reproduced without permission. This is not survey data.*



0 750 1,500 3,000 Metres

**PLANSCAPE**  
BUILDING COMMUNITY THROUGH PLANNING



COUNTY OFFICIAL PLAN DESIGNATIONS

PRIME AGRICULTURAL AREA

CANADA LAND INVENTORY (CLI)

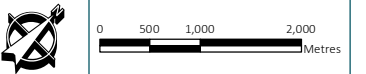
- CLASS 1**  
SOILS IN THIS CLASS HAVE NO SIGNIFICANT LIMITATIONS IN USE FOR CROPS
- CLASS 2**  
SOILS IN THIS CLASS HAVE MODERATE LIMITATIONS THAT RESTRICT THE RANGE OF CROPS OR REQUIRE MODERATE CONSERVATION PRACTICES
- CLASS 3**  
SOILS IN THIS CLASS HAVE MODERATELY SEVERE LIMITATIONS THAT RESTRICT THE RANGE OF CROPS OR REQUIRE SPECIAL CONSERVATION PRACTICES
- CLASS 4**  
SOILS IN THIS CLASS HAVE SEVERE LIMITATIONS THAT RESTRICT THE RANGE OF CROPS OR REQUIRE SPECIAL CONSERVATION PRACTICES
- ORGANIC SOILS**  
NOT PLACED IN CAPABILITY CLASSES

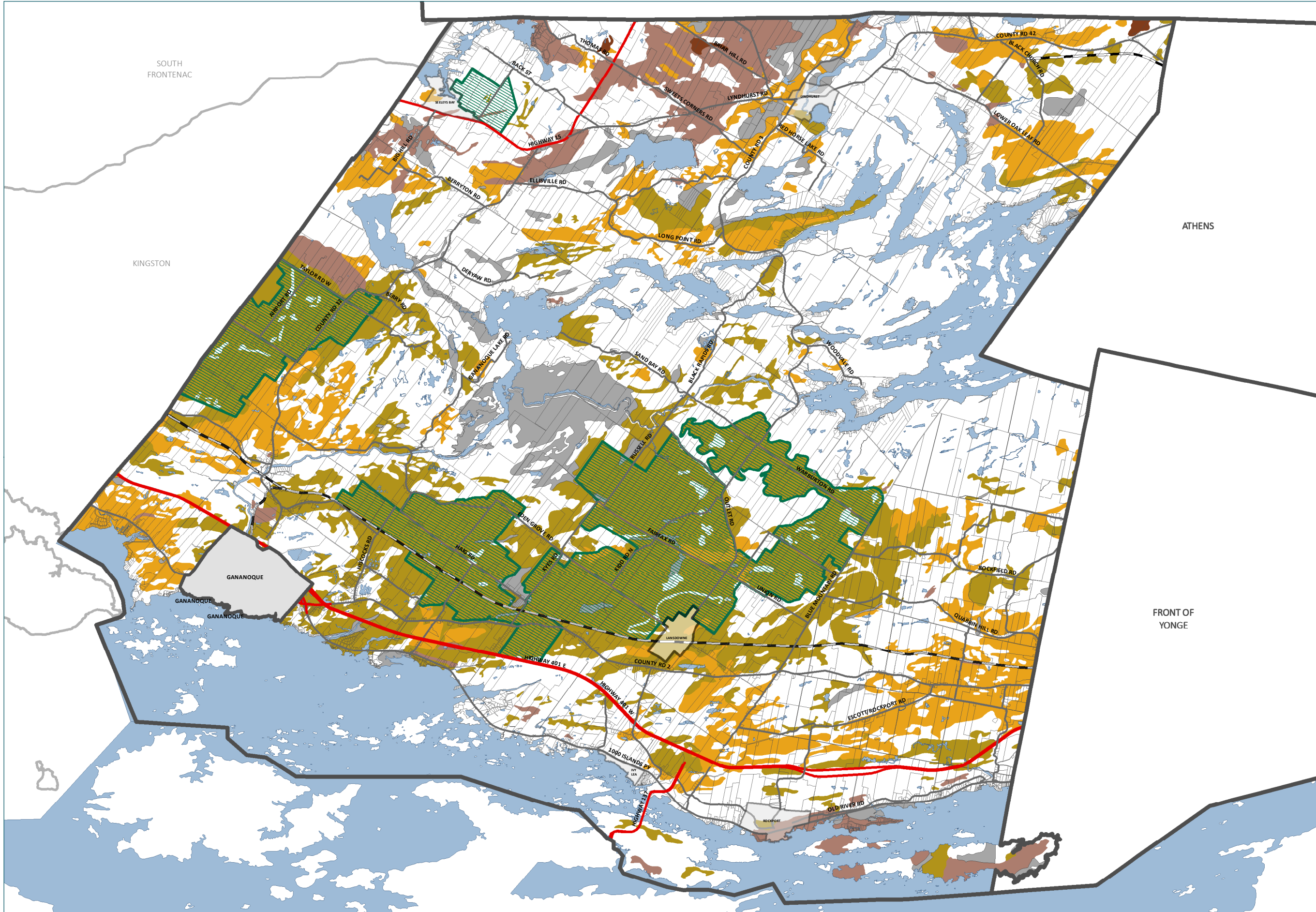
LEEDS & THE  
1000 ISLANDS

ELIZABETHTOWN-KITLEY



The information displayed on this map has been compiled from various sources. While every effort has been made to accurately depict the information, this map should not be relied on as being a precise indicator of locations. Copyright United Counties of Leeds and Grenville, 2022. All rights reserved. May not be reproduced without permission. This is not survey data.





COUNTY OFFICIAL PLAN DESIGNATIONS

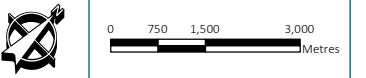
PRIME AGRICULTURAL AREA

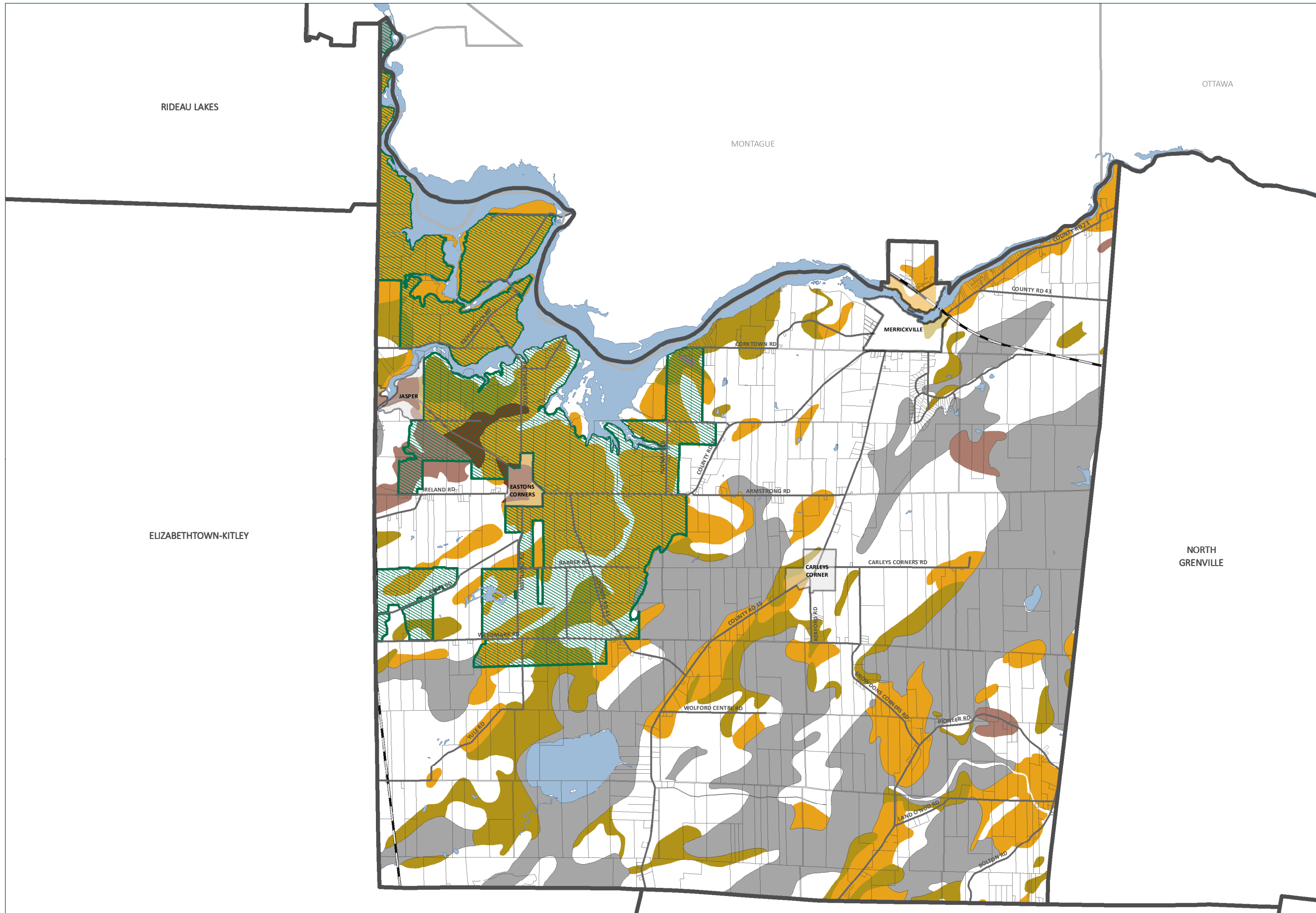
CANADA LAND INVENTORY (CLI)

- CLASS 1**  
SOILS IN THIS CLASS HAVE NO SIGNIFICANT LIMITATIONS IN USE FOR CROPS
- CLASS 2**  
SOILS IN THIS CLASS HAVE MODERATE LIMITATIONS THAT RESTRICT THE RANGE OF CROPS OR REQUIRE MODERATE CONSERVATION PRACTICES
- CLASS 3**  
SOILS IN THIS CLASS HAVE MODERATELY SEVERE LIMITATIONS THAT RESTRICT THE RANGE OF CROPS OR REQUIRE SPECIAL CONSERVATION PRACTICES
- CLASS 4**  
SOILS IN THIS CLASS HAVE SEVERE LIMITATIONS THAT RESTRICT THE RANGE OF CROPS OR REQUIRE SPECIAL CONSERVATION PRACTICES
- ORGANIC SOILS**  
NOT PLACED IN CAPABILITY CLASSES



The information displayed on this map has been compiled from various sources. While every effort has been made to accurately depict the information, this map should not be relied on as being a precise indicator of locations. Copyright United Counties of Leeds and Grenville, 2022. All rights reserved. May not be reproduced without permission. This is not survey data.





COUNTY OFFICIAL PLAN DESIGNATIONS

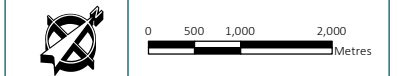
PRIME AGRICULTURAL AREA

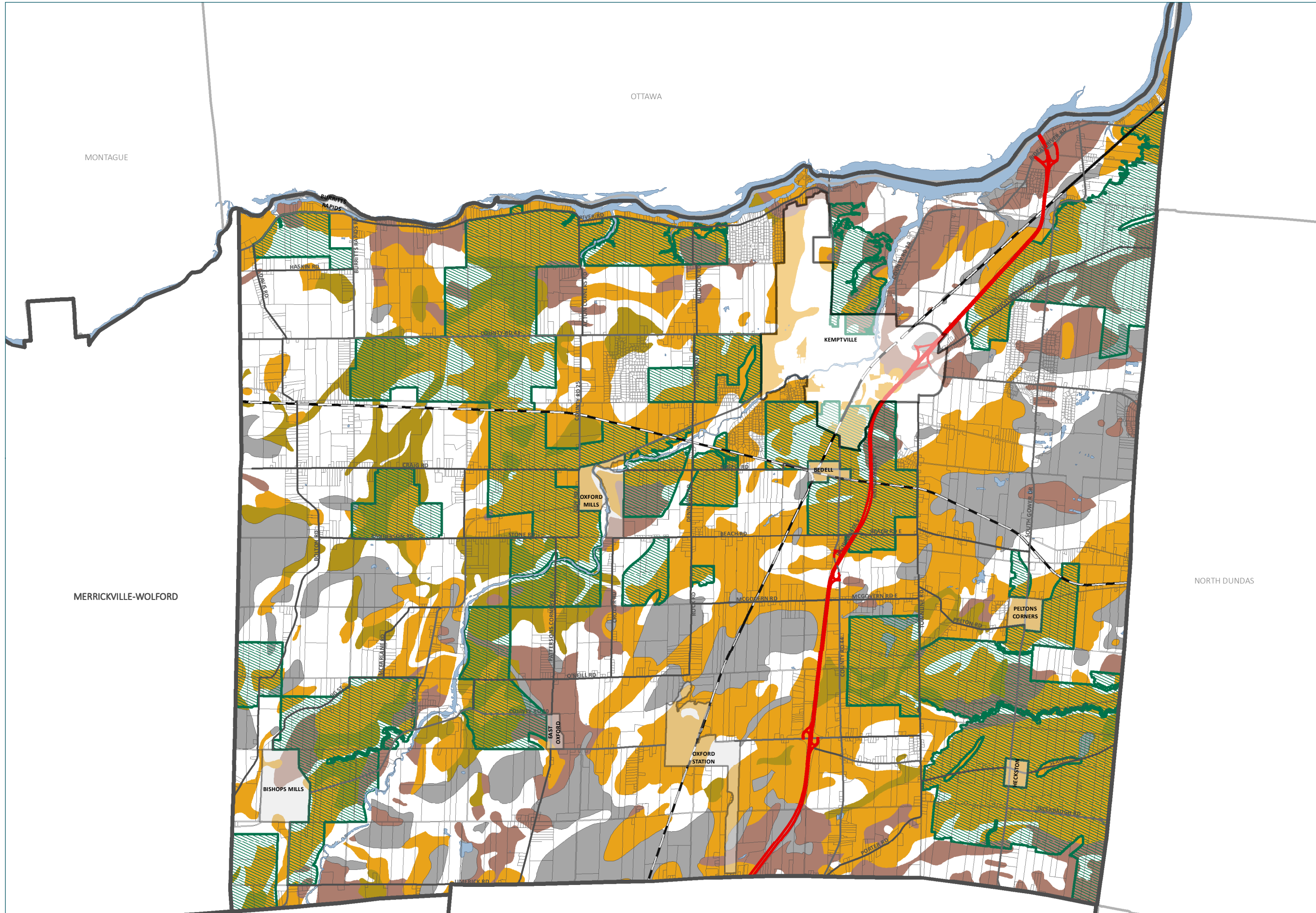
CANADA LAND INVENTORY (CLI)

- CLASS 1**  
SOILS IN THIS CLASS HAVE NO SIGNIFICANT LIMITATIONS IN USE FOR CROPS
- CLASS 2**  
SOILS IN THIS CLASS HAVE MODERATE LIMITATIONS THAT RESTRICT THE RANGE OF CROPS OR REQUIRE MODERATE CONSERVATION PRACTICES
- CLASS 3**  
SOILS IN THIS CLASS HAVE MODERATELY SEVERE LIMITATIONS THAT RESTRICT THE RANGE OF CROPS OR REQUIRE SPECIAL CONSERVATION PRACTICES
- CLASS 4**  
SOILS IN THIS CLASS HAVE SEVERE LIMITATIONS THAT RESTRICT THE RANGE OF CROPS OR REQUIRE SPECIAL CONSERVATION PRACTICES
- ORGANIC SOILS**  
NOT PLACED IN CAPABILITY CLASSES



The information displayed on this map has been compiled from various sources. While every effort has been made to accurately depict the information, this map should not be relied on as being a precise indicator of locations. Copyright United Counties of Leeds and Grenville, 2022. All rights reserved. May not be reproduced without permission. This is not survey data.





COUNTY OFFICIAL PLAN DESIGNATIONS

PRIME AGRICULTURAL AREA

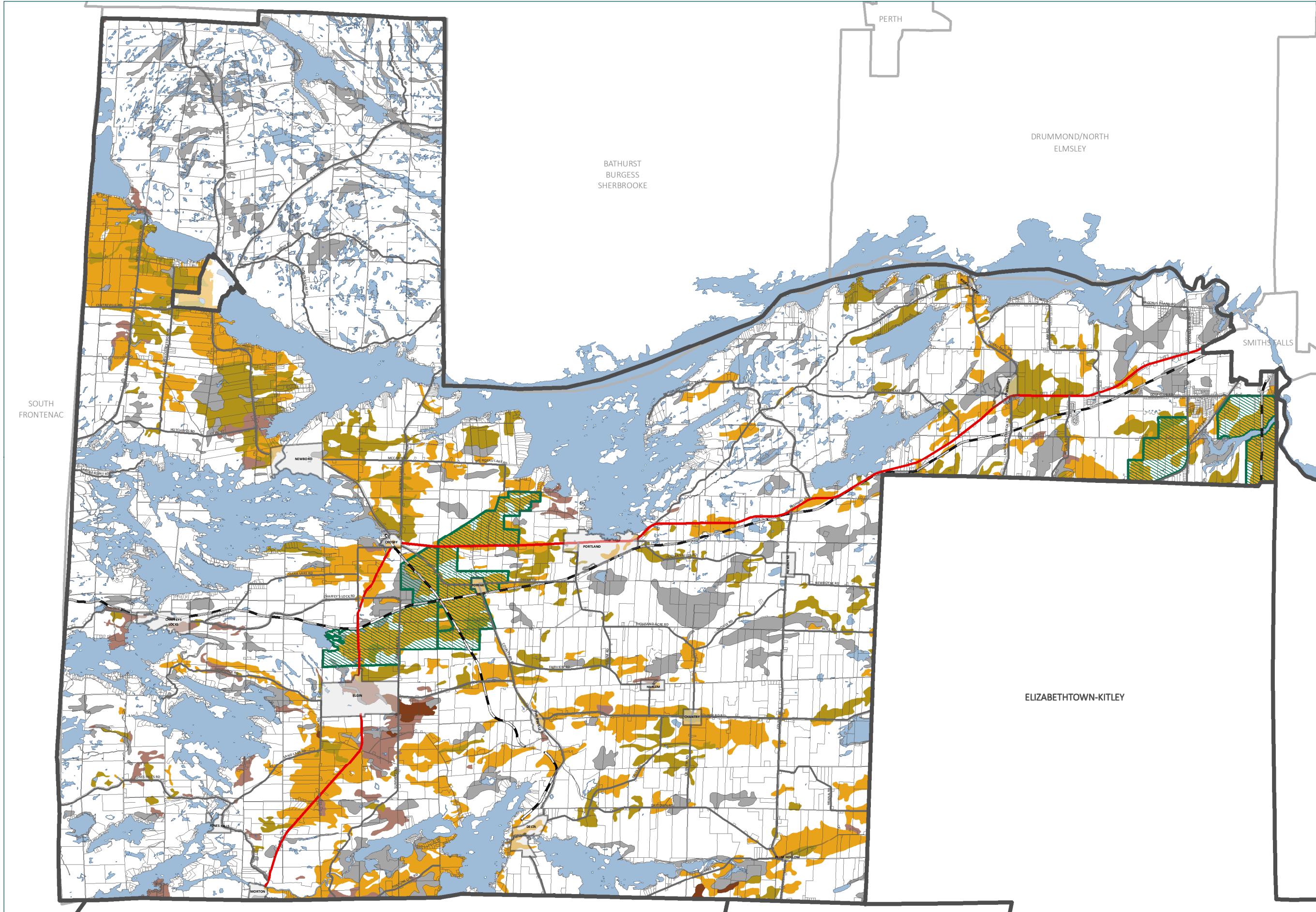
CANADA LAND INVENTORY (CLI)

- CLASS 1**  
SOILS IN THIS CLASS HAVE NO SIGNIFICANT LIMITATIONS IN USE FOR CROPS
- CLASS 2**  
SOILS IN THIS CLASS HAVE MODERATE LIMITATIONS THAT RESTRICT THE RANGE OF CROPS OR REQUIRE MODERATE CONSERVATION PRACTICES
- CLASS 3**  
SOILS IN THIS CLASS HAVE MODERATELY SEVERE LIMITATIONS THAT RESTRICT THE RANGE OF CROPS OR REQUIRE SPECIAL CONSERVATION PRACTICES
- CLASS 4**  
SOILS IN THIS CLASS HAVE SEVERE LIMITATIONS THAT RESTRICT THE RANGE OF CROPS OR REQUIRE SPECIAL CONSERVATION PRACTICES
- ORGANIC SOILS**  
NOT PLACED IN CAPABILITY CLASSES



The information displayed on this map has been compiled from various sources. While every effort has been made to accurately depict the information, this map should not be relied on as being a precise indicator of locations. Copyright United Counties of Leeds and Grenville, 2022. All rights reserved. May not be reproduced without permission. This is not survey data.





COUNTY OFFICIAL PLAN DESIGNATIONS

PRIME AGRICULTURAL AREA

CANADA LAND INVENTORY (CLI)

- CLASS 1**  
SOILS IN THIS CLASS HAVE NO SIGNIFICANT LIMITATIONS IN USE FOR CROPS
- CLASS 2**  
SOILS IN THIS CLASS HAVE MODERATE LIMITATIONS THAT RESTRICT THE RANGE OF CROPS OR REQUIRE MODERATE CONSERVATION PRACTICES
- CLASS 3**  
SOILS IN THIS CLASS HAVE MODERATELY SEVERE LIMITATIONS THAT RESTRICT THE RANGE OF CROPS OR REQUIRE SPECIAL CONSERVATION PRACTICES
- CLASS 4**  
SOILS IN THIS CLASS HAVE SEVERE LIMITATIONS THAT RESTRICT THE RANGE OF CROPS OR REQUIRE SPECIAL CONSERVATION PRACTICES
- ORGANIC SOILS**  
NOT PLACED IN CAPABILITY CLASSES



The information displayed on this map has been compiled from various sources. While every effort has been made to accurately depict the information, this map should not be relied on as being a precise indicator of locations. Copyright United Counties of Leeds and Grenville, 2022. All rights reserved. May not be reproduced without permission. This is not survey data.

