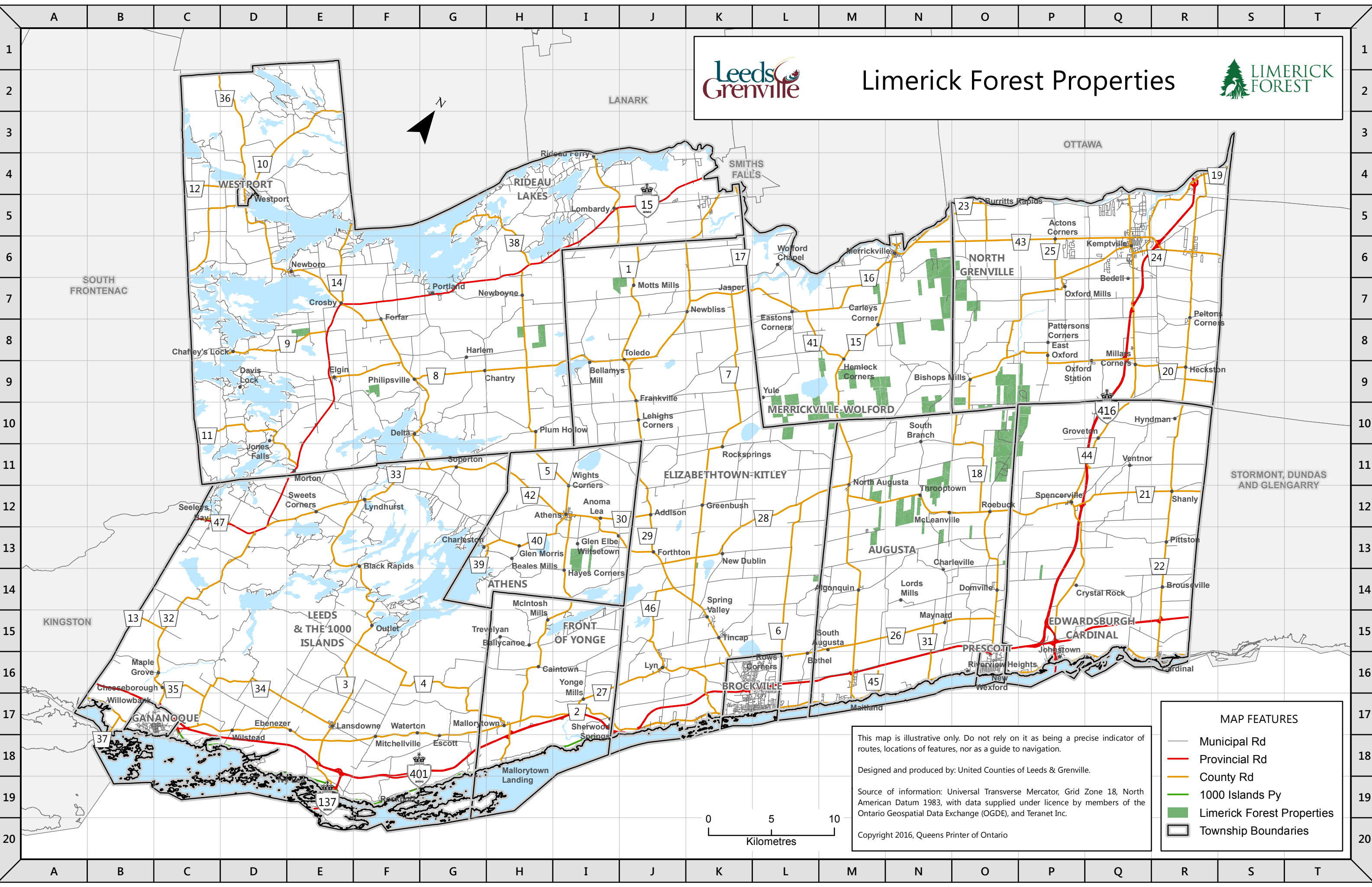




# Limerick Forest Properties



This map is illustrative only. Do not rely on it as being a precise indicator of routes, locations of features, nor as a guide to navigation.

Designed and produced by: United Counties of Leeds & Grenville.

Source of information: Universal Transverse Mercator, Grid Zone 18, North American Datum 1983, with data supplied under licence by members of the Ontario Geospatial Data Exchange (OGDE), and Teranet Inc.

Copyright 2016, Queens Printer of Ontario

**MAP FEATURES**

- Municipal Rd
- Provincial Rd
- County Rd
- 1000 Islands Py
- Limerick Forest Properties
- Township Boundaries