

Asbestos Building Materials Assessment

Multi-Residential Building
318 Brock Street
Merrickville ON



Prepared for:
United Counties of Leeds & Grenville
100-25 Central Avenue West
Brockville ON K6V 4N6

Prepared by:
Stantec Consulting Ltd.
400-1331 Clyde Avenue
Ottawa ON K2C 3G4

Project No.: 122150275

February 16, 2017

Table of Contents

EXECUTIVE SUMMARY	ii
1.0 INTRODUCTION	1
2.0 SCOPE	1
2.1 LIMITATIONS	2
2.1.1 Project-Specific Limitations	3
2.1.2 Information from Previous Reports	3
3.0 REGULATORY FRAMEWORK	3
4.0 ASSESSMENT METHODOLOGY	4
4.1 FACILITY DESCRIPTION	5
4.2 DOCUMENT REVIEW.....	5
5.0 FINDINGS	5
5.1 FRIABLE ASBESTOS-CONTAINING MATERIALS.....	5
5.2 NON-FRIABLE ASBESTOS-CONTAINING MATERIALS.....	6
5.3 PRESUMED ASBESTOS-CONTAINING MATERIALS	6
5.4 NON-ASBESTOS-CONTAINING MATERIALS	7
5.5 POTENTIAL FOR VERMICULITE INSULATION	7
6.0 RECOMMENDATIONS	7
7.0 CLOSURE	8

LIST OF APPENDICES

APPENDIX A	SUMMARY OF RESULTS FOR ANALYSIS OF BULK SAMPLES FOR ASBESTOS CONTENT
APPENDIX B	LABORATORY ANALYTICAL REPORTS – ASBESTOS: POLARIZED LIGHT MICROSCOPY
APPENDIX C	SUMMARY OF OCCURRENCES OF ASBESTOS-CONTAINING MATERIALS
APPENDIX D	SELECTED SITE PHOTOGRAPHS

Executive Summary

Stantec Consulting Ltd. (Stantec) was commissioned by the United Counties of Leeds & Grenville (Leeds Grenville) to conduct an Asbestos Building Materials Assessment of the multi-residential building (subject building), located at 318 Brock Street in Merrickville, Ontario.

The purpose of the assessment was to assist Leeds Grenville to meet the requirements of *Ontario Regulation 278/05 Designated Substance - Asbestos on Construction Projects and in Buildings and Repair Operations*, as amended (O. Reg. 278/05), made under the *Occupational Health and Safety Act* (OHSA). The assessment includes the identification of building materials suspected to be asbestos-containing materials (ACMs) that may require special attention during the operation of the building.

The assessment is intended for the long-term management of asbestos-containing building materials to be included as part of an overall Asbestos Management Program (AMP) and not for construction or renovation purposes. The conclusions presented herein represent the findings for a limited number of residential units. Intrusive inspections and additional testing of suspect ACMs and presumed asbestos-containing materials (PACMs) may be required to complement the information provided in this report if any work activities are planned which may disturb ACMs and/or PACMs.

The work was carried out in accordance with the requirements of the OHSA. The site work was conducted by Victoria Pereira on January 17, 2017.

Based on the visual assessment and laboratory analysis, ACMs were identified to be present in the form of:

- 12"x12" Vinyl floor tiles – beige with dots (non-friable); and,
- 12"x12" Vinyl floor tiles – yellow with white streaks (non-friable).

These materials were observed to be in good condition.

The following building materials were observed to be present but not sampled, and are listed as PACMs:

- Cement pipe;
- Mastic associated with 12"x12" vinyl floor tile – beige with dots;
- Mastic associated with 12"x12" vinyl floor tile – yellow with white streaks;
- Mastic associated with 12"x12" vinyl floor tile – pink with beige smears;
- Ceramic tile grout and mortar/adhesive;
- Fire rated doors;
- Brick mortar;
- Exterior door caulking – brown;

ASBESTOS BUILDING MATERIALS ASSESSMENT

- Exterior window and door glazing compound - brown;
- Interior window and door glazing compound - brown;
- Roof caulking; and,
- Roofing materials.

These materials were observed to be in good condition. These materials were not sampled to preserve their integrity. As these materials are known to have been manufactured with asbestos, they should be presumed to be asbestos-containing unless proven otherwise by laboratory analysis.

Similar materials are likely to present in units not assessed and these should be treated as ACMs or PACMs.

The statements made in this Executive Summary text are subject to the same limitations included in this report, and are to be read in conjunction with the remainder of this report.

Recommendations pertaining to the handling, removal, disposal and management of identified asbestos-containing materials are provided within this report.

ASBESTOS BUILDING MATERIALS ASSESSMENT

February 16, 2017

1.0 INTRODUCTION

Stantec Consulting Ltd. (Stantec) was commissioned by the United Counties of Leeds & Grenville (Leeds Grenville) to conduct an Asbestos Building Materials Assessment of the multi-residential building (subject building), located at 318 Brock Street in Merrickville, Ontario.

The purpose of the assessment was to assist Leeds Grenville to meet the requirements of *Ontario Regulation 278/05 Designated Substance - Asbestos on Construction Projects and in Buildings and Repair Operations*, as amended (O. Reg. 278/05), made under the *Occupational Health and Safety Act* (OHSA). The assessment includes the identification of building materials suspected to be asbestos-containing materials (ACMs) that may require special attention during the operation of the building.

The assessment is intended for the long-term management of asbestos-containing building materials to be included as part of an overall Asbestos Management Program (AMP) and not for construction or renovation purposes. The conclusions presented herein represent the findings for a limited number of residential units. Intrusive inspections and additional testing of suspect ACMs and presumed asbestos-containing materials (PACMs) may be required to complement the information provided in this report if any work activities are planned which may disturb ACMs and/or PACMs.

The work was carried out in accordance with the requirements of the OHSA. The site work was conducted by Victoria Pereira on January 17, 2017.

2.0 SCOPE

The scope of work for this assessment involved the following:

- A review of existing information, including site drawings, previous assessment and/or abatement documentation and discussions with site personnel, where available;
- A visual assessment of readily accessible areas for the presence of asbestos-containing building materials. The assessment generally included common areas, mechanical rooms, and a representative number of residential units;
- The collection of representative bulk samples from building materials suspected of containing asbestos fibres;
- Submission of samples collected for laboratory analysis; and,
- Evaluation and interpretation of field findings and laboratory analytical results to develop conclusions and recommendations pertaining to the management of ACMs and PACMs identified within the building.

ASBESTOS BUILDING MATERIALS ASSESSMENT

February 16, 2017

2.1 LIMITATIONS

This report reflects the observations made within accessed areas and the results of analyses performed on specific materials sampled during the assessment. Analytical results reflect the sampled materials at the specific sample locations.

Concealed spaces were assessed via existing access panels, where present. Interior and exterior finishes, solid ceilings, walls, flooring and structural elements were not removed to access concealed areas. An inaccessible area, where ACMs may be present includes, but is not limited to: ceiling spaces, wall cavities, crawlspaces, and buried materials.

Due to limitations on the agreed to scope of work for this project as well as physical limitations in accessing concealed areas and limitations associated with working in occupied/operational spaces, there are specific limitations to the information that can be provided for each suspect ACM or PACM considered in this assessment. The presence and asbestos content of some building materials could not be confirmed.

Building materials that may contain asbestos but were not accessible for sampling include, but are not limited to the following:

- Roofing materials;
- Sub-grade materials (e.g., asbestos cement drainage pipe);
- Flooring material concealed beneath carpeting, ceramic tile, brickwork, hardwood flooring, and/or concealed beneath existing sub-floors;
- Insulation material present inside walls (e.g., suspected asbestos-containing vermiculite insulation inside concrete block and/or brick walls);
- Drywall and/or wall plaster and associated finish materials concealed behind new and/or additional walls;
- Woven tape inside duct connection joints;
- Mechanical (e.g., piping and ducting) insulation within wall cavities, crawlspaces tunnels or other concealed spaces;
- Insulation materials inside fire doors;
- Window and door glazing compounds;
- Heating, ventilation and air conditioning (HVAC) units mechanical inner linings and/or inner ducting insulation;
- Heat protection materials inside mechanical installations and light fixtures; and,
- Ceramic tile grout and mortar/adhesive concealed behind ceramic tiles.

ASBESTOS BUILDING MATERIALS ASSESSMENT

February 16, 2017

2.1.1 Project-Specific Limitations

It should be noted that the following materials were reported by Leeds Grenville to have been removed and replaced within with last three (3) years; as such, these materials are not suspected to be asbestos-containing:

- Vinyl floor tiles in vacant units observed;
- Vinyl sheet flooring on stairs and unit washrooms; and,
- Foam pipe insulation in hatches above the ceiling.

The areas included in this assessment were limited to the following:

- Units 103, 203, 202 (vacant) and 207 (vacant);
- Common areas (custodian office, garbage room, garage room, storage room, crawlspace, common room, entrance, lobby, stairs, corridors, and laundry room);
- Mechanical Rooms (mechanical / electrical rooms); and,
- Exterior.

The following areas were not accessed, for the reasons indicated:

- Roof (no access)

2.1.2 Information from Previous Reports

Stantec was not provided with previous reports for review.

3.0 REGULATORY FRAMEWORK

Asbestos is included in the *Ontario Regulation, 490/09 Designated Substances*, as amended (O. Reg. 490/09) made under Ontario's OHS Act, which primarily regulates worker exposure to asbestos during manufacturing of asbestos-containing products, but also includes requirements related to respiratory equipment, measurement of airborne fibres, and medical surveillance of exposed workers.

Ontario Regulation 278/05 clearly defines ACM as a material that contains 0.5 per cent or more asbestos by dry weight. Additionally, the regulation requires that the "record" (i.e., the Asbestos Building Materials Assessment) be updated at least once in each 12 month period or whenever the owner of the facility becomes aware of new information relating to the suspect and confirmed ACMs.

The general waste management regulation for the province of Ontario is *R.R.O. 1990, Regulation 347 General - Waste Management*, as amended (R.R.O. 1990, 347), under the *Environmental Protection Act* (EPA) of Ontario, sets out the requirements for the proper disposal of asbestos

ASBESTOS BUILDING MATERIALS ASSESSMENT

February 16, 2017

waste in Ontario. The waste must be placed in a double sealed container, properly labeled, free of cuts, tears or punctures and disposed of at a licensed waste station which has been properly notified of the presence of asbestos waste.

4.0 ASSESSMENT METHODOLOGY

Asbestos-containing materials are grouped into two classifications, friable and non-friable materials. Friable ACMs are those that can easily be crumbled or broken apart by mere hand pressure. When these materials break apart asbestos fibres are then released into the atmosphere. Non-friable ACMs or “manufactured products” are materials that by the nature of their manufacturing/construction do not readily allow the release of asbestos fibres. These materials should not be cut or shaped with power tools, since this procedure may allow for the release of the asbestos fibres. Some non-friable materials such as plaster, drywall and ceiling tiles are considered to be non-friable in an undisturbed state, but can release fibers when damaged or disturbed.

It is Stantec’s understanding that the subject building was constructed before 1990. This construction time period is consistent with those dates when asbestos-containing building materials were commonly used.

A visual assessment of accessible areas was undertaken in order to check for the presence of materials suspected of containing asbestos. Locations to collect discrete bulk asbestos samples of suspect building materials were identified. Samples of representative materials were then collected at these locations. An assessment of the condition and accessibility was completed for each occurrence of an ACM. The Public Works and Government Services Canada (PWGSC) document entitled *Deputy Ministers Directive 057 – Asbestos Management* (Last Revised June 16, 1999) was used as the basis for the criteria that was applied in evaluating the presence of ACMs and PACMs within the subject building, where applicable.

Samples of suspect ACMs from various building materials were collected and submitted to Parcel Laboratories Ltd. (Parcel) located in Ottawa, Ontario for analysis using Polarized Light Microscopy (PLM) with dispersion staining. The analysis was conducted following the U.S. EPA/600/R-93/116 Method. Parcel is certified under the National Voluntary Laboratory Accreditation Program (NVLAP) to perform asbestos analysis of bulk samples. Asbestos-containing materials are defined as a material that contains 0.5 per cent or more asbestos by dry weight.

A positive stop option was used. Multiple samples of visually similar material were collected and submitted for laboratory analysis. Once one sample within the set is identified to contain asbestos, further analysis of the subsequent samples is deemed to be unnecessary and not conducted.

ASBESTOS BUILDING MATERIALS ASSESSMENT

February 16, 2017

4.1 FACILITY DESCRIPTION

The multi-residential building located at 318 Brock Street consists of a two (2) level building with 20 units. The reported construction date of the building is 1979. The typical structural components and finishes associated with this building consist of brick exterior walls, various types of flooring including cement, vinyl floor tile, ceramic tile, carpet and vinyl sheet flooring and interior concrete block and drywall walls with texture ceilings.

4.2 DOCUMENT REVIEW

Stantec was not provided with previous reports for review.

5.0 FINDINGS

A summary list of the bulk samples collected by Stantec, including a description of the material, sampling location, type of analysis and laboratory test results is provided in **Appendix A**. A copy of the PLM Laboratory Certificates of Analysis for bulk samples collected is provided in **Appendix B**.

A summary of occurrences of ACMs and/or PACMs is provided in **Appendix C**. Each ACM occurrence includes the following information:

- Room component that contains ACM;
- Location of the ACM within the room space;
- ACM description;
- Estimated quantity;
- Original sample number or representative sample number;
- Friability;
- Condition; and,
- Comments regarding recommended actions.

Selected site photographs are provided in **Appendix D**.

5.1 FRIABLE ASBESTOS-CONTAINING MATERIALS

Friable building materials suspected to be asbestos-containing were identified by laboratory analysis to be non-asbestos-containing.

ASBESTOS BUILDING MATERIALS ASSESSMENT

February 16, 2017

5.2 NON-FRIABLE ASBESTOS-CONTAINING MATERIALS

Non-friable building materials were observed to be present and identified by laboratory analysis to be asbestos-containing in the form of:

- 12"x12" Vinyl floor tiles – beige with dots; and,
- 12"x12" Vinyl floor tiles – yellow with white streaks.

These materials were observed to be in good condition.

Similar asbestos-containing materials are likely to present in units not assessed and should be treated as asbestos-containing materials. Materials not sampled should be presumed to be asbestos-containing.

5.3 PRESUMED ASBESTOS-CONTAINING MATERIALS

The following building materials were observed to be present but not sampled, and are listed as PACMs:

- Cement pipe;
- Mastic associated with 12"x12" vinyl floor tile – beige with dots;
- Mastic associated with 12"x12" vinyl floor tile – yellow with white streaks;
- Mastic associated with 12"x12" vinyl floor tile – pink with beige smears;
- Ceramic tile grout and mortar/adhesive;
- Fire rated doors;
- Brick mortar;
- Exterior door caulking – brown;
- Exterior window and door glazing compound - brown;
- Interior window and door glazing compound - brown;
- Roof caulking; and,
- Roofing materials.

These materials were observed to be in good condition. These materials were not sampled to preserve their integrity. As these materials are known to have been manufactured with asbestos, they should be presumed to be asbestos-containing unless proven otherwise by laboratory analysis.

February 16, 2017

5.4 NON-ASBESTOS-CONTAINING MATERIALS

It should be noted that the following materials were reported by Leeds Grenville to have been removed and replaced within with last three (3) years; as such, these materials are not suspected to be asbestos-containing:

- Vinyl floor tiles in vacant units observed;
- Vinyl sheet flooring on stairs and unit washrooms; and,
- Foam pipe insulation in hatches above the ceiling.

A summary list of the bulk samples collected during this assessment and confirmed to be non-ACMs by laboratory analysis is provided in **Appendix A**.

5.5 POTENTIAL FOR VERMICULITE INSULATION

Various walls of the subject facility were comprised of masonry (concrete) blocks. Asbestos-contaminated vermiculite was historically used as insulating material in masonry block or brick walls. To assess for this potential ACM, destructive sampling is required, which was not conducted as part of this assessment. Although various holes, breaches and cracks were observed and no vermiculite was present, the presence of this potential ACM cannot be ruled out without destructive testing.

6.0 RECOMMENDATIONS

Stantec recommends the following with regards to meeting the requirements of O. Reg. 278/05:

- Asbestos-containing materials that may be impacted during renovation and/or demolition activities should be removed prior to the renovation and/or demolition activities;
- Prior to renovation and/or demolition activities that would disturb them, undertake testing of PACMs that may be impacted to determine their asbestos content. Confirmed asbestos materials should be handled accordingly;
- Should a material suspected to contain asbestos fibres become uncovered during renovation and/or demolition activities, all work in the areas that may disturb the material should be stopped. Samples of the suspect material should be submitted for laboratory analysis to determine if asbestos fibres are present. Confirmed asbestos materials should be handled accordingly;
- If masonry block walls are to be impacted by renovation and/or demolition work, and these walls have not been checked for the presence of vermiculite insulation, intrusive assessments for vermiculite should be undertaken prior to planned renovation and/or demolition work. If vermiculite insulation is suspected to be present, this material should be treated as an ACM until testing can show otherwise; and,

ASBESTOS BUILDING MATERIALS ASSESSMENT

February 16, 2017

- This report should be added to the Asbestos Management Program and referred to as the current asbestos record.

7.0 CLOSURE

This report has been prepared for the sole benefit of United Counties of Leeds & Grenville. The report may not be used or relied upon by any other person or entity without the express written consent of Stantec Consulting Ltd. and United Counties of Leeds & Grenville.

Any uses that a third party makes of this report, or any reliance on decisions based on it, are the responsibility of such third parties. Stantec Consulting Ltd. accepts no responsibility for damages, if any, suffered by any third party as a result of decisions made or actions based on this report.

The information and conclusions contained in this report are based upon work undertaken by trained professional and technical staff in accordance with generally accepted engineering and scientific practices current at the time the work was performed. Conclusions presented in this report should not be construed as legal advice.

The conclusions presented in this report represent the best technical judgment of Stantec Consulting Ltd. based on the data obtained from the work. The conclusions are based on the site conditions encountered by Stantec Consulting Ltd. at the time the work was performed at the specific assessment and/or sampling locations, and can only be extrapolated to an undefined limited area around these locations. The extent of the limited area depends on building construction and conditions, weather, building usage and other factors. Due to the nature of the investigation and the limited data available, Stantec Consulting Ltd. cannot warrant against undiscovered environmental liabilities.

If any conditions become apparent that differ significantly from our understanding of conditions as presented in this report, we request that we be notified immediately to reassess the conclusions provided herein.

ASBESTOS BUILDING MATERIALS ASSESSMENT

February 16, 2017

We trust that the above is satisfactory for your purposes at this time. Should you have any questions or concerns, or require additional information, please do not hesitate to contact the undersigned at your convenience.

This report was prepared by Victoria Pereira and reviewed by Linda Fleet and Martin Ling.

Regards,

STANTEC CONSULTING LTD.



Linda Fleet
Project Manager
Phone: (905) 415-6368
Fax: (905) 474-9889
linda.fleet@stantec.com



Martin Ling
Senior Reviewer
Phone: (905) 415-6386
Fax: (905) 474-9889
martin.ling@stantec.com



Nicole Flanagan, M.A.Sc., P.Eng
Associate
Phone: (613) 738-6086
Fax: (613) 722-2799
nicole.flanagan@stantec.com

VP/MS/ML /aek

\\Cd1215-f01\work_group\01221\active\122150275\Reports\318 Brock Street Merrickville\122150275_rpt_vp_2017Feb16_UCLG_318BrockSt_Merrickville.docx

ASBESTOS BUILDING MATERIALS ASSESSMENT

Appendix A
Summary of Results for Analysis of
Bulk Samples for Asbestos Content
February 16, 2017

Appendix A

Summary of Results for Analysis of Bulk Samples for Asbestos Content

Summary of Bulk Sample Analysis for Asbestos Type and Content

Sample Number	Sampling Location	Description of Sampled Material	Asbestos Type and Content	Analysis
318-BS-01A	2nd Floor, Storage Room	12"x12" Vinyl floor tile - pink and beige smears	None Detected	PLM
318-BS-01B	2nd Floor, Storage Room	12"x12" Vinyl floor tile - pink and beige smears	None Detected	PLM
318-BS-01C	2nd Floor, Storage Room	12"x12" Vinyl floor tile - pink and beige smears	None Detected	PLM
318-BS-02A	1st Floor, Unit 103 Hallway	12"x12" Vinyl floor tile - beige with dots	2.24% Chrysotile	PLM
318-BS-02B	1st Floor, Unit 103 Hallway	12"x12" Vinyl floor tile - beige with dots	Positive Stop Not Analyzed	PLM
318-BS-02C	1st Floor, Unit 103 Hallway	12"x12" Vinyl floor tile - beige with dots	Positive Stop Not Analyzed	PLM
318-BS-03A	1st Floor, Unit 103 Hallway - wall	Drywall joint-fill compound	None Detected	PLM
318-BS-03B	2nd Floor, Corridor near Unit 201 - wall	Drywall joint-fill compound	None Detected	PLM
318-BS-03C	1st Floor, Lobby - wall	Drywall joint-fill compound	None Detected	PLM
318-BS-03D	1st Floor, North Stairs - wall	Drywall joint-fill compound	None Detected	PLM
318-BS-03E	2nd Floor, North Stairs - wall	Drywall joint-fill compound	None Detected	PLM
318-BS-03F	2nd Floor, South Stairs - wall	Drywall joint-fill compound	None Detected	PLM
318-BS-03G	2nd Floor, South Stairs - wall	Drywall joint-fill compound	None Detected	PLM
318-BS-04A	1st Floor, Unit 103 Hallway - ceiling	Stucco	None Detected	PLM
318-BS-04B	2nd Floor, Storage Room - ceiling	Stucco	None Detected	PLM
318-BS-04C	1st Floor, Mechanical / Electrical Room - ceiling	Stucco	None Detected	PLM
318-BS-04D	1st Floor, Garbage Room - ceiling	Stucco	None Detected	PLM

Summary of Bulk Sample Analysis for Asbestos Type and Content

Sample Number	Sampling Location	Description of Sampled Material	Asbestos Type and Content	Analysis
318-BS-04E	1st Floor, Corridor - ceiling	Stucco	None Detected	PLM
318-BS-04F	1st Floor, North Stairs - ceiling	Stucco	None Detected	PLM
318-BS-04G	1st Floor, South Stairs - ceiling	Stucco	None Detected	PLM
318-BS-05A	1st Floor, Mechanical / Electrical Room - wall	Fire stop caulking material - grey	None Detected	PLM
318-BS-05B	1st Floor, Mechanical / Electrical Room - wall	Fire stop caulking material - grey	None Detected	PLM
318-BS-05C	1st Floor, Mechanical / Electrical Room - wall	Fire stop caulking material - grey	None Detected	PLM
318-BS-06A	1st Floor, Custodian Office	12"x12" Vinyl floor tile - yellow with white streaks	0.75% Chrysotile	PLM
318-BS-06B	1st Floor, Custodian Office	12"x12" Vinyl floor tile - yellow with white streaks	Positive Stop Not Analyzed	PLM
318-BS-06C	1st Floor, Custodian Office	12"x12" Vinyl floor tile - yellow with white streaks	Positive Stop Not Analyzed	PLM
318-BS-07A	1st Floor, Corridor - window	Interior caulking - white	None Detected	PLM
318-BS-07B	1st Floor, Corridor - window	Interior caulking - white	None Detected	PLM
318-BS-07C	1st Floor, Corridor - window	Interior caulking - white	None Detected	PLM
318-BS-08A	Exterior, Laundry Room - window	Exterior caulking - white	None Detected	PLM
318-BS-08B	Exterior, Laundry Room - window	Exterior caulking - white	None Detected	PLM
318-BS-08C	Exterior, Laundry Room - window	Exterior caulking - white	None Detected	PLM
318-BS-09A	Exterior, South Stairs - door	Exterior caulking - grey	None Detected	PLM
318-BS-09B	Exterior, South Stairs - door	Exterior caulking - grey	None Detected	PLM
318-BS-09C	Exterior, South Stairs - door	Exterior caulking - grey	None Detected	PLM

Summary of Bulk Sample Analysis for Asbestos Type and Content

Sample Number	Sampling Location	Description of Sampled Material	Asbestos Type and Content	Analysis
318-BS-10A	Exterior, Main Entrance - door	Exterior caulking - brown	None Detected	PLM
318-BS-10B	Exterior, Main Entrance - door	Exterior caulking - brown	None Detected	PLM
318-BS-10C	Exterior, Main Entrance - door	Exterior caulking - brown	None Detected	PLM
318-BS-11A	1st Floor, Main Entrance - door	Interior caulking - grey	None Detected	PLM
318-BS-11B	1st Floor, Main Entrance - door	Interior caulking - grey	None Detected	PLM
318-BS-11C	1st Floor, Main Entrance - door	Interior caulking - grey	None Detected	PLM
318-BS-12A	1st Floor, Main Entrance - door	Interior caulking - brown	None Detected	PLM
318-BS-12B	1st Floor, Main Entrance - door	Interior caulking - brown	None Detected	PLM
318-BS-12C	1st Floor, Main Entrance - door	Interior caulking - brown	None Detected	PLM
318-BS-13A	1st Floor, Main Entrance - door / window	Interior / exterior foam glaze - grey	None Detected	PLM
318-BS-13B	Exterior, Main Entrance - door / window	Interior / exterior foam glaze - grey	None Detected	PLM
318-BS-13C	Exterior, Main Entrance - door / window	Interior / exterior foam glaze - grey	None Detected	PLM
318-BS-14A	Exterior, Laundry Room - window	Exterior glaze - white	None Detected	PLM
318-BS-14B	Exterior, Laundry Room - window	Exterior glaze - white	None Detected	PLM
318-BS-14C	Exterior, Laundry Room - window	Exterior glaze - white	None Detected	PLM

ASBESTOS BUILDING MATERIALS ASSESSMENT

Appendix B
Laboratory Analytical Reports – Asbestos: Polarized Light Microscopy
February 16, 2017

Appendix B
Laboratory Analytical Reports – Asbestos: Polarized Light Microscopy

Certificate of Analysis

Stantec Consulting Ltd. (Ottawa)

300-675 Cochrane Dr West Tower
Markham, ON L3R 0B8
Attn: Linda Fleet

Client PO: 122150275- 318 Brock St
Project: 122150275
Custody:

Report Date: 27-Jan-2017
Order Date: 23-Jan-2017

This Certificate of Analysis contains analytical data applicable to the following samples as submitted:

Paracel ID	Client ID
1704095-01	318-BS-01A (Tile)
1704095-02	318-BS-01B (Tile)
1704095-03	318-BS-01C (Tile)
1704095-04	318-BS-02A (Tile)
1704095-05	318-BS-02B (Tile)
1704095-06	318-BS-02C (Tile)
1704095-07	318-BS-03A
1704095-08	318-BS-03B
1704095-09	318-BS-03C
1704095-10	318-BS-03D
1704095-11	318-BS-03E
1704095-12	318-BS-03F
1704095-13	318-BS-03G
1704095-14	318-BS-04A
1704095-15	318-BS-04B
1704095-16	318-BS-04C
1704095-17	318-BS-04D
1704095-18	318-BS-04E
1704095-19	318-BS-04F
1704095-20	318-BS-04G
1704095-21	318-BS-05A
1704095-22	318-BS-05B
1704095-23	318-BS-05C
1704095-24	318-BS-06A (Tile)
1704095-25	318-BS-06B (Tile)
1704095-26	318-BS-06C (Tile)

Approved By:



Emma Diaz
Senior Analyst

Any use of these results implies your agreement that our total liability in connection with this work, however arising, shall be limited to the amount paid by you for this work, and that our employees or agents shall not under any circumstances be liable to you in connection with this work.

Certificate of Analysis

Client: **Stantec Consulting Ltd. (Ottawa)**

Client PO: **122150275- 318 Brock St**

Report Date: 27-Jan-2017

Order Date: 23-Jan-2017

Project Description: **122150275**

1704095-27	318-BS-07A
1704095-28	318-BS-07B
1704095-29	318-BS-07C
1704095-30	318-BS-08A
1704095-31	318-BS-08B
1704095-32	318-BS-08C
1704095-33	318-BS-09A
1704095-34	318-BS-09B
1704095-35	318-BS-09C
1704095-36	318-BS-10A
1704095-37	318-BS-10B
1704095-38	318-BS-10C
1704095-39	318-BS-11A
1704095-40	318-BS-11B
1704095-41	318-BS-11C
1704095-42	318-BS-12A
1704095-43	318-BS-12B
1704095-44	318-BS-12C
1704095-45	318-BS-13A
1704095-46	318-BS-13B
1704095-47	318-BS-13C
1704095-48	318-BS-14A
1704095-49	318-BS-14B
1704095-50	318-BS-14C

Certificate of Analysis
 Client: **Stantec Consulting Ltd. (Ottawa)**
 Client PO: **122150275- 318 Brock St**

Report Date: 27-Jan-2017
 Order Date: 23-Jan-2017
 Project Description: **122150275**

Asbestos, PLM Visual Estimation **MDL - 0.5%**

Parcel I.D.	Sample Date	Layers Analyzed	Colour	Description	Asbestos Detected:	Material Identification	% Content
1704095-01	17-Jan-17	sample homogenized	Pink	Floor Tile	No	Client ID: 318-BS-01A (Tile) [AS-PRE] Non-Fibers	100
1704095-02	17-Jan-17	sample homogenized	Pink	Floor Tile	No	Client ID: 318-BS-01B (Tile) [AS-PRE] Non-Fibers	100
1704095-03	17-Jan-17	sample homogenized	Pink	Floor Tile	No	Client ID: 318-BS-01C (Tile) [AS-PRE] Non-Fibers	100
1704095-04	17-Jan-17	sample homogenized	Brown	Floor Tile	Yes	Client ID: 318-BS-02A (Tile) [AS-PRE] Chrysotile Non-Fibers	2.24 97.76
1704095-05	17-Jan-17					Client ID: 318-BS-02B (Tile) not analyzed	
1704095-06	17-Jan-17					Client ID: 318-BS-02C (Tile) not analyzed	
1704095-07	17-Jan-17	sample homogenized	Grey	Drywall Joint Compound	No	Client ID: 318-BS-03A Cellulose Non-Fibers	1 99
1704095-08	17-Jan-17	sample homogenized	Grey	Drywall Joint Compound	No	Client ID: 318-BS-03B Cellulose Non-Fibers	1 99
1704095-09	17-Jan-17	sample homogenized	Grey	Drywall Joint Compound	No	Client ID: 318-BS-03C Cellulose Non-Fibers	1 99
1704095-10	17-Jan-17	sample homogenized	Grey	Drywall Joint Compound	No	Client ID: 318-BS-03D Non-Fibers	100
1704095-11	17-Jan-17	sample homogenized	Grey	Drywall Joint Compound	No	Client ID: 318-BS-03E Non-Fibers	100
1704095-12	17-Jan-17	sample homogenized	Grey	Drywall Joint Compound	No	Client ID: 318-BS-03F Non-Fibers	100
1704095-13	17-Jan-17	sample homogenized	Grey	Drywall Joint Compound	No	Client ID: 318-BS-03G Non-Fibers	100
1704095-14	17-Jan-17	sample homogenized	Beige	Texture Coat	No	Client ID: 318-BS-04A Non-Fibers	100
1704095-15	17-Jan-17	sample homogenized	Grey	Texture Coat	No	Client ID: 318-BS-04B Non-Fibers	100

Certificate of Analysis

Report Date: 27-Jan-2017

Client: Stantec Consulting Ltd. (Ottawa)

Order Date: 23-Jan-2017

Client PO: 122150275- 318 Brock St

Project Description: 122150275

Asbestos, PLM Visual Estimation **MDL - 0.5%**

Paracel I.D.	Sample Date	Layers Analyzed	Colour	Description	Asbestos Detected:	Material Identification	% Content
1704095-16	17-Jan-17	sample homogenized	Beige	Texture Coat	No	Client ID: 318-BS-04C Non-Fibers	100
1704095-17	17-Jan-17	sample homogenized	Grey	Texture Coat	No	Client ID: 318-BS-04D Non-Fibers	100
1704095-18	17-Jan-17	sample homogenized	Grey	Texture Coat	No	Client ID: 318-BS-04E Non-Fibers	100
1704095-19	17-Jan-17	sample homogenized	Grey	Texture Coat	No	Client ID: 318-BS-04F Non-Fibers	100
1704095-20	17-Jan-17	sample homogenized	Grey	Texture Coat	No	Client ID: 318-BS-04G Non-Fibers	100
1704095-21	17-Jan-17	sample homogenized	Grey	Caulking	No	Client ID: 318-BS-05A Non-Fibers	100 [AS-PRE]
1704095-22	17-Jan-17	sample homogenized	Grey	Caulking	No	Client ID: 318-BS-05B Non-Fibers	100 [AS-PRE]
1704095-23	17-Jan-17	sample homogenized	Grey	Caulking	No	Client ID: 318-BS-05C Non-Fibers	100 [AS-PRE]
1704095-24	17-Jan-17	sample homogenized	Brown	Floor Tile	Yes	Client ID: 318-BS-06A (Tile) Chrysotile Non-Fibers	0.75 99.25 [AS-PRE]
1704095-25	17-Jan-17					Client ID: 318-BS-06B (Tile) not analyzed	
1704095-26	17-Jan-17					Client ID: 318-BS-06C (Tile) not analyzed	
1704095-27	17-Jan-17	sample homogenized	White	Caulking	No	Client ID: 318-BS-07A MMVF Non-Fibers	1 99 [AS-PRE]
1704095-28	17-Jan-17	sample homogenized	White	Caulking	No	Client ID: 318-BS-07B MMVF Non-Fibers	1 99 [AS-PRE]
1704095-29	17-Jan-17	sample homogenized	White	Caulking	No	Client ID: 318-BS-07C MMVF Non-Fibers	1 99 [AS-PRE]
1704095-30	17-Jan-17	sample homogenized	White	Caulking	No	Client ID: 318-BS-08A Non-Fibers	100 [AS-PRE]

Certificate of Analysis
 Client: **Stantec Consulting Ltd. (Ottawa)**
 Client PO: **122150275- 318 Brock St**

Report Date: 27-Jan-2017
 Order Date: 23-Jan-2017
 Project Description: **122150275**

Asbestos, PLM Visual Estimation **MDL - 0.5%**

<i>Parcel I.D.</i>	<i>Sample Date</i>	<i>Layers Analyzed</i>	<i>Colour</i>	<i>Description</i>	<i>Asbestos Detected:</i>	<i>Material Identification</i>	<i>% Content</i>
1704095-31	17-Jan-17	sample homogenized	White	Caulking	No	Client ID: 318-BS-08B [AS-PRE] Non-Fibers	100
1704095-32	17-Jan-17	sample homogenized	White	Caulking	No	Client ID: 318-BS-08C [AS-PRE] Non-Fibers	100
1704095-33	17-Jan-17	sample homogenized	Grey	Caulking	No	Client ID: 318-BS-09A [AS-PRE] Non-Fibers	100
1704095-34	17-Jan-17	sample homogenized	Grey	Caulking	No	Client ID: 318-BS-09B [AS-PRE] Non-Fibers	100
1704095-35	17-Jan-17	sample homogenized	Grey	Caulking	No	Client ID: 318-BS-09C [AS-PRE] Non-Fibers	100
1704095-36	17-Jan-17	sample homogenized	Grey	Caulking	No	Client ID: 318-BS-10A [AS-PRE] Non-Fibers	100
1704095-37	17-Jan-17	sample homogenized	Grey	Caulking	No	Client ID: 318-BS-10B [AS-PRE] Non-Fibers	100
1704095-38	17-Jan-17	sample homogenized	Grey	Caulking	No	Client ID: 318-BS-10C [AS-PRE] Non-Fibers	100
1704095-39	17-Jan-17	sample homogenized	Brown	Caulking	No	Client ID: 318-BS-11A [AS-PRE] Non-Fibers	100
1704095-40	17-Jan-17	sample homogenized	Brown	Caulking	No	Client ID: 318-BS-11B [AS-PRE] Non-Fibers	100
1704095-41	17-Jan-17	sample homogenized	Brown	Caulking	No	Client ID: 318-BS-11C [AS-PRE] Non-Fibers	100
1704095-42	17-Jan-17	sample homogenized	Brown	Caulking	No	Client ID: 318-BS-12A [AS-PRE] Non-Fibers	100
1704095-43	17-Jan-17	sample homogenized	Brown	Caulking	No	Client ID: 318-BS-12B [AS-PRE] Non-Fibers	100
1704095-44	17-Jan-17	sample homogenized	Brown	Caulking	No	Client ID: 318-BS-12C [AS-PRE] Non-Fibers	100
1704095-45	17-Jan-17	sample homogenized	Grey	Caulking	No	Client ID: 318-BS-13A [AS-PRE] Non-Fibers	100
1704095-46	17-Jan-17	sample homogenized	Grey	Caulking	No	Client ID: 318-BS-13B [AS-PRE] Non-Fibers	100
1704095-47	17-Jan-17	sample homogenized	Grey	Caulking	No	Client ID: 318-BS-13C [AS-PRE] Non-Fibers	100

Certificate of Analysis
 Client: **Stantec Consulting Ltd. (Ottawa)**
 Client PO: **122150275- 318 Brock St**

Report Date: 27-Jan-2017
 Order Date: 23-Jan-2017
 Project Description: **122150275**

Asbestos, PLM Visual Estimation **MDL - 0.5%**

Parcel I.D.	Sample Date	Layers Analyzed	Colour	Description	Asbestos Detected:	Material Identification	% Content
1704095-48	17-Jan-17	sample homogenized	White	Glaze	No	Client ID: 318-BS-14A [AS-PRE] Non-Fibers	100
1704095-49	17-Jan-17	sample homogenized	White	Glaze	No	Client ID: 318-BS-14B [AS-PRE] Non-Fibers	100
1704095-50	17-Jan-17	sample homogenized	White	Glaze	No	Client ID: 318-BS-14C [AS-PRE] Non-Fibers	100

* MMVF: Man Made Vitreous Fibers: Fiberglass, Mineral Wool, Rockwool, Glasswool

** Analytes in bold indicate asbestos mineral content.

Analysis Summary Table

Analysis	Method Reference/Description	Lab Location	NVLAP Lab Code *	Analysis Date
Asbestos, PLM Visual Estimation	by EPA 600/R-93/116	2 - Ottawa West Lab	200812-0	26-Jan-17

* Reference to the NVLAP term does not permit the user of this report to claim product certification, approval, or endorsement by NVLAP, NIST, or any agency of the Federal Government.

Qualifier Notes

Sample Qualifiers :

AS-PRE: Due to the difficult nature of the bulk sample (interfering fibers/binders), additional NOB preparation was required prior to analysis

Work Order Revisions / Comments

None

ASBESTOS BUILDING MATERIALS ASSESSMENT

Appendix C
Summary of Occurrences of Asbestos-Containing Materials
February 16, 2017

Appendix C
Summary of Occurrences of Asbestos-Containing Materials

Summary of Occurrences of Asbestos-Containing Materials

Level	Room	Specific Location	ACM Location	ACM Type	Estimated Quantity	Sample Number	Original Sample?	Asbestos Content	Friable? Visible?	Access.	ACM Condition	Comments/ Notes
1	Common Area	Kitchen	Under Floor Tile	Mastic Associated with 12"x12" Vinyl Floor Tile - Pink and Beige Smears	5 sq.m	NS	No	PACM	No No	D	unknown (PACM)	PACM
1	Corridors	Doors	Doors	Fire Rated Doors	NQ	NS	No	PACM	No Yes	A	good (PACM)	PACM
1	Custodian Office	Floor	Under Floor Tile	Mastic Associated with 12"x12" Vinyl Floor Tile - Yellow with White Streaks	15 sq.m	NS	No	PACM	No No	D	unknown (PACM)	PACM
1	Custodian Office	Floor	Floor	12"x12" Vinyl Floor Tile - Yellow with White Streaks	15 sq.m	318-BS-06A	Yes	0.75% Chrysotile	No Yes	A	good	ACM
1	Custodian Storage	Floor	Floor	12"x12" Vinyl Floor Tile - Yellow with White Streaks	5 sq.m	Ref: 318-BS-06A	No	0.75% Chrysotile	No Yes	A	good	ACM
1	Custodian Storage	Floor	Under Floor Tile	Mastic Associated with 12"x12" Vinyl Floor Tile - Yellow with White Streaks	5 sq.m	NS	No	PACM	No No	D	unknown (PACM)	PACM
1	Laundry Room	Floor	Floor	Ceramic Tile Grout and Mortar / Adhesive	15 sq.m	NS	No	PACM	No Yes	A	good (PACM)	PACM
1	Lobby	Floor	Floor	Ceramic Tile Grout and Mortar / Adhesive	20 sq.m	NS	No	PACM	No Yes	A	good (PACM)	PACM
1	Main Entrance	Window / Door	Window / Door	Interior Glazing Compound - Brown	4 m	NS	No	PACM	No Yes	A	good (PACM)	PACM

Accessibility Classification

- A - Areas of the building within reach (from floor level) of all building users
- B - Frequently entered maintenance areas within reach of maintenance staff, without the need for a ladder
- C - Areas of the building above 2.4 m where use of a ladder is required to reach the asbestos
- D - Areas of the building behind inaccessible solid ceiling systems, walls, or mechanical equipment, etc., where demolition of the ceiling, wall, or equipment, etc., is required to reach the asbestos

Visibility

- Yes - Suspect material is visible without opening hatches or lifting ceiling tiles
- No - Suspect material can only be viewed if access hatches are opened or ceiling tiles lifted.

* Based on a non-intrusive inspection of visible surfaces within the room space.

- Notes:
- ACM - asbestos-containing material
 - PACM - presumed asbestos-containing material
 - Access. - accessibility
 - nq - not quantified
 - na - not applicable
 - ns - not sampled
 - ref - reference sample
 - F - friable
 - NF - non friable
 - RCA - recommend corrective action
 - BS - bulk sample

Summary of Occurrences of Asbestos-Containing Materials

Level	Room	Specific Location	ACM Location	ACM Type	Estimated Quantity	Sample Number	Original Sample?	Asbestos Content	Friable? Visible?	Access.	ACM Condition	Comments/ Notes
1	Main Entrance	Floor	Floor	Ceramic Tile Grout and Mortar / Adhesive	5 sq.m	NS	No	PACM	No Yes	A	good (PACM)	PACM
1	Main Entrance	Walls	Walls	Brick Mortar	10 sq.m	NS	No	PACM	No Yes	A	good (PACM)	PACM
1	Stairs	Doors	Doors	Fire Rated Doors	NQ	NS	No	PACM	No Yes	A	good (PACM)	PACM
1	Unit 103	Exterior Door	Exterior Door	Exterior Caulking - Brown	5 m	NS	No	PACM	No Yes	A	good (PACM)	PACM
1	Unit 103	Hallway, Closet, Bedroom, Living Room and Kitchen	Floor	12"x12" Vinyl Floor Tile - Beige with Dots	60 sq.m	318-BS-02A	Yes	2.24% Chrysotile	No Yes	A	good	ACM
1	Unit 103	Hallway, Closet, Bedroom, Living Room and Kitchen	Under Floor Tile	Mastic Associated with 12"x12" Vinyl Floor Tile - Beige with Dots	60 sq.m	NS	No	PACM	No No	D	unknown (PACM)	PACM
1	Unit 103	Washroom	Walls	Ceramic Tile Grout and Mortar / Adhesive	5 sq.m	NS	No	PACM	No Yes	A	good (PACM)	PACM
1	Washroom	Floor	Under Floor Tile	Mastic Associated with 12"x12" Vinyl Floor Tile - Pink and Beige Smears	5 sq.m	NS	No	PACM	No No	D	unknown (PACM)	PACM
2	Corridors	Doors	Doors	Fire Rated Doors	NQ	NS	No	PACM	No Yes	A	good (PACM)	PACM

Accessibility Classification

- A - Areas of the building within reach (from floor level) of all building users
- B - Frequently entered maintenance areas within reach of maintenance staff, without the need for a ladder
- C - Areas of the building above 2.4 m where use of a ladder is required to reach the asbestos
- D - Areas of the building behind inaccessible solid ceiling systems, walls, or mechanical equipment, etc., where demolition of the ceiling, wall, or equipment, etc., is required to reach the asbestos

Visibility

- Yes - Suspect material is visible without opening hatches or lifting ceiling tiles
- No - Suspect material can only be viewed if access hatches are opened or ceiling tiles lifted.

* Based on a non-intrusive inspection of visible surfaces within the room space.

- Notes:
- ACM - asbestos-containing material
 - PACM - presumed asbestos-containing material
 - Access. - accessibility
 - nq - not quantified
 - na - not applicable
 - ns - not sampled
 - ref - reference sample
 - F - friable
 - NF - non friable
 - RCA - recommend corrective action
 - BS - bulk sample

Summary of Occurrences of Asbestos-Containing Materials

Level	Room	Specific Location	ACM Location	ACM Type	Estimated Quantity	Sample Number	Original Sample?	Asbestos Content	Friable? Visible?	Access.	ACM Condition	Comments/ Notes
2	Stairs	Doors	Doors	Fire Rated Doors	NQ	NS	No	PACM	No Yes	A	good (PACM)	PACM
2	Storage	Floor	Under Floor Tile	Mastic Associated with 12"x12" Vinyl Floor Tile - Pink and Beige Smears	20 sq.m	NS	No	PACM	No No	D	unknown (PACM)	PACM
2	Unit 202	Washroom	Walls	Ceramic Tile Grout and Mortar / Adhesive	5 sq.m	NS	No	PACM	No Yes	A	good (PACM)	PACM
2	Unit 202	Exterior Door	Exterior Door	Exterior Caulking - Brown	5 m	NS	No	PACM	No Yes	A	good (PACM)	PACM
2	Unit 203	Hallway, Closet, Bedroom, Living Room and Kitchen	Under Floor Tile	Mastic Associated with 12"x12" Vinyl Floor Tile - Beige with Dots	60 sq.m	NS	No	PACM	No No	D	unknown (PACM)	PACM
2	Unit 203	Washroom	Walls	Ceramic Tile Grout and Mortar / Adhesive	5 sq.m	NS	No	PACM	No Yes	A	good (PACM)	PACM
2	Unit 203	Exterior Door	Exterior Door	Exterior Caulking - Brown	5 m	NS	No	PACM	No Yes	A	good (PACM)	PACM
2	Unit 203	Hallway, Closet, Bedroom, Living Room and Kitchen	Floor	12"x12" Vinyl Floor Tile - Beige with Dots	60 sq.m	Ref: 318-BS-02A	No	2.24% Chrysotile	No Yes	A	good	ACM
2	Unit 207	Washroom	Walls	Ceramic Tile Grout and Mortar / Adhesive	5 sq.m	NS	No	PACM	No Yes	A	good (PACM)	PACM

Accessibility Classification

- A - Areas of the building within reach (from floor level) of all building users
- B - Frequently entered maintenance areas within reach of maintenance staff, without the need for a ladder
- C - Areas of the building above 2.4 m where use of a ladder is required to reach the asbestos
- D - Areas of the building behind inaccessible solid ceiling systems, walls, or mechanical equipment, etc., where demolition of the ceiling, wall, or equipment, etc., is required to reach the asbestos

Visibility

- Yes - Suspect material is visible without opening hatches or lifting ceiling tiles
- No - Suspect material can only be viewed if access hatches are opened or ceiling tiles lifted.

- Notes:
- ACM - asbestos-containing material
 - PACM - presumed asbestos-containing material
 - Access. - accessibility
 - nq - not quantified
 - na - not applicable
 - ns - not sampled
 - ref - reference sample
 - F - friable
 - NF - non friable
 - RCA - recommend corrective action
 - BS - bulk sample

* Based on a non-intrusive inspection of visible surfaces within the room space.

Summary of Occurrences of Asbestos-Containing Materials

Level	Room	Specific Location	ACM Location	ACM Type	Estimated Quantity	Sample Number	Original Sample?	Asbestos Content	Friable?	Visible?	Access.	ACM Condition	Comments/ Notes
2	Unit 207	Exterior Door	Exterior Door	Exterior Caulking - Brown	5 m	NS	No	PACM	No	Yes	A	good (PACM)	PACM
Crawlspace	Crawlspace	Walls	Walls	Cement Pipe	1 m	NS	No	PACM	No	Yes	B	good (PACM)	OBSERVED LEADING INTO WALL AND DRAINS OUTSIDE OF BUILDING
Exterior	Exterior	Walls	Walls	Brick Mortar	NQ	NS	No	PACM	No	Yes	A	good (PACM)	PACM
Exterior	Exterior	Main Entrance	Window / Door	Exterior Glazing Compound - Brown	4 m	NS	No	PACM	No	Yes	A	good (PACM)	PACM
Roof	Roof	Roofing	Roofing	Roof Caulking	NQ	NS	No	PACM	No	Yes	C	unknown (PACM)	PACM
Roof	Roof	Roofing	Roofing	Roofing Materials	NQ	NS	No	PACM	No	Yes	C	unknown (PACM)	PACM

Accessibility Classification

- A - Areas of the building within reach (from floor level) of all building users
- B - Frequently entered maintenance areas within reach of maintenance staff, without the need for a ladder
- C - Areas of the building above 2.4 m where use of a ladder is required to reach the asbestos
- D - Areas of the building behind inaccessible solid ceiling systems, walls, or mechanical equipment, etc., where demolition of the ceiling, wall, or equipment, etc., is required to reach the asbestos

Visibility

- Yes - Suspect material is visible without opening hatches or lifting ceiling tiles
- No - Suspect material can only be viewed if access hatches are opened or ceiling tiles lifted.

- Notes:
- ACM - asbestos-containing material
 - PACM - presumed asbestos-containing material
 - Access. - accessibility
 - nq - not quantified
 - na - not applicable
 - ns - not sampled
 - ref - reference sample
 - F - friable
 - NF - non friable
 - RCA - recommend corrective action
 - BS - bulk sample

* Based on a non-intrusive inspection of visible surfaces within the room space.

ASBESTOS BUILDING MATERIALS ASSESSMENT

Appendix D
Selected Site Photographs
February 16, 2017

Appendix D
Selected Site Photographs

ASBESTOS BUILDING MATERIALS ASSESSMENT

Appendix D
Selected Site Photographs
February 16, 2017



Photo 1: Asbestos-containing 12"x12" vinyl floor tiles – beige with dots (2.24% Chrysotile) in unit 103 hallway.

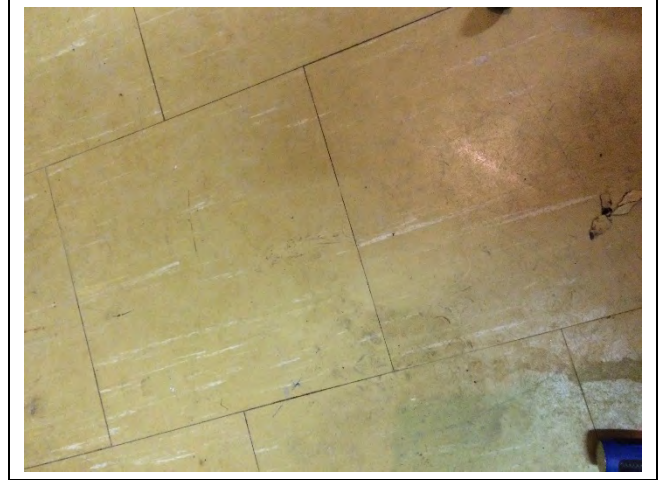


Photo 2: Asbestos-containing 12"x12" vinyl floor tiles – yellow with white streaks (0.75% Chrysotile) in the custodian office.

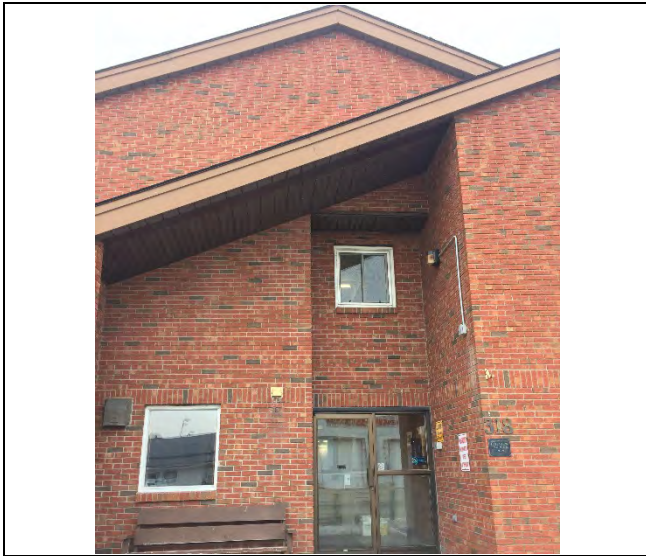


Photo 3: Presumed asbestos-containing brick mortar on the exterior main entrance.

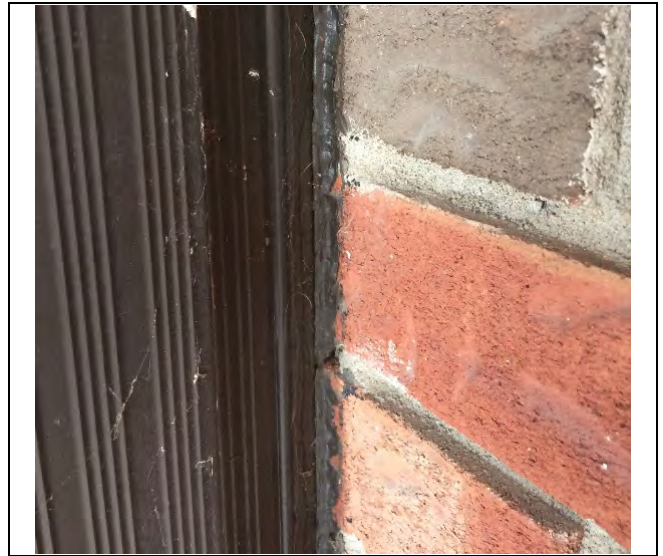


Photo 4: Presumed asbestos-containing exterior door caulking – brown at the exterior door in unit 202.

ASBESTOS BUILDING MATERIALS ASSESSMENT

Appendix D
Selected Site Photographs
February 16, 2017

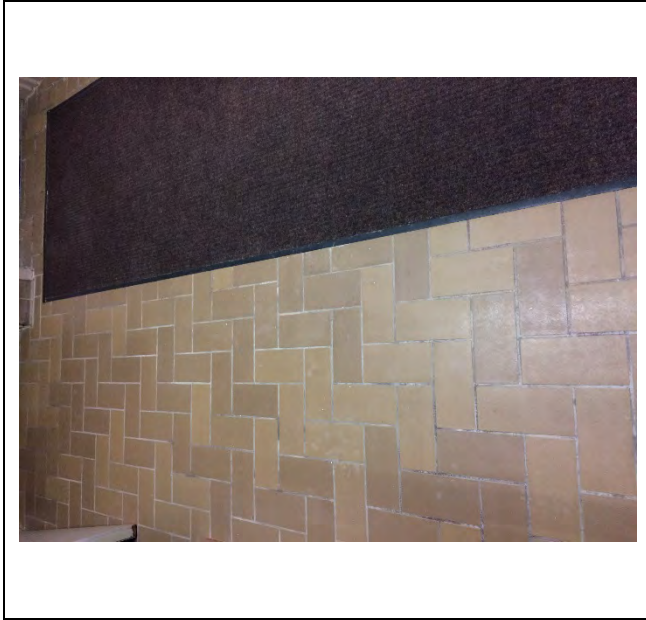


Photo 5: Presumed asbestos-containing ceramic tile grout and mortar/adhesive observed to be in good condition in the lobby.



Photo 6: Presumed asbestos-containing ceramic tile grout and mortar/adhesive observed to be in good condition on walls in the washroom at unit 103.