

# LIMERICK FOREST - FORSYTHE NORTH

## Limerick Forest Recreational Trails

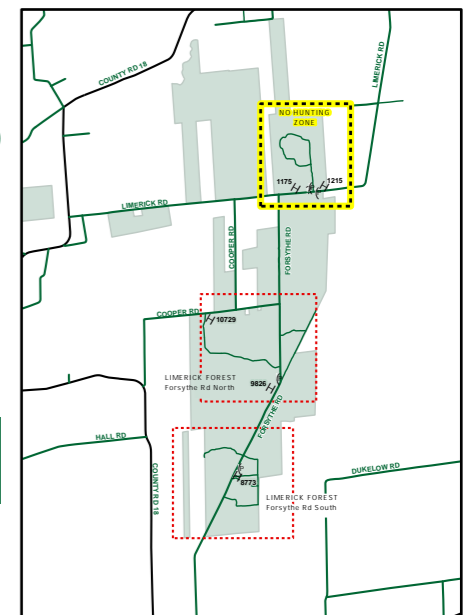
Limerick Forest is owned and managed by the United Counties of Leeds and Grenville with assistance from the Friends of Limerick volunteer group. Limerick consists of approximately 6,000 ha's of forest and wetland situated in various locations throughout the Counties.

The diverse ecosystems found in Limerick Forest support many species of flora and fauna. We encourage you to explore and enjoy the forest and all it has to offer. However, please remember the forest does not take care of itself. This is "your" forest so please take good care of it. Carry out what you carry in and "leave no trace". Thank you and enjoy the forest!

## Trail Use

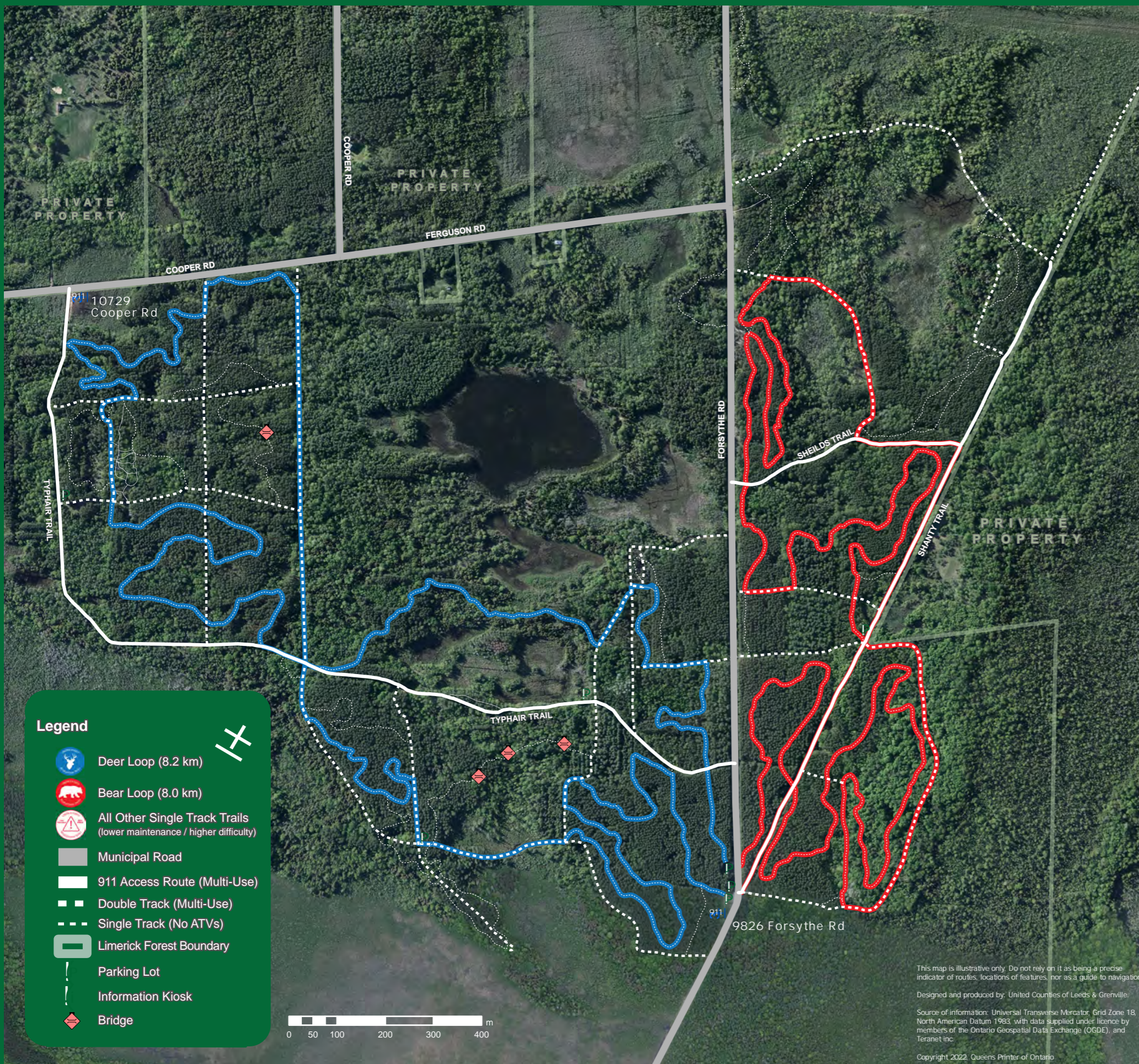
Limerick Forest is open to a wide range of recreational activities including hunting and motorized trail riding. Please exercise caution on the trails and respect other forest users.

- Use of forest is at own risk
- Trails are multi-use and open to motorized and non-motorized activities
- Camping / camp fires are not permitted
- Digging or cutting trees for firewood is prohibited
- Hunting is allowed in accordance with provincial and federal regulations, with the exception of the Limerick Forest Interpretive Centre block (north and south sides of Limerick Rd.)
- Target practice is not permitted
- The construction of permanent tree stands is not allowed
- Dumping or littering is strictly prohibited



**IMPORTANT NOTICE**  
Your 911 Location is 9826 Forsythe Rd

[www.limerickforest.ca](http://www.limerickforest.ca)



**Legend**

- Deer Loop (8.2 km)
- Bear Loop (8.0 km)
- All Other Single Track Trails (lower maintenance / higher difficulty)
- Municipal Road
- 911 Access Route (Multi-Use)
- Double Track (Multi-Use)
- Single Track (No ATVs)
- Limerick Forest Boundary
- Parking Lot
- Information Kiosk
- Bridge

This map is illustrative only. Do not rely on it as being a precise indicator of routes, locations of features, nor as a guide to navigation.  
Designed and produced by: United Counties of Leeds & Grenville.  
Source of information: Universal Transverse Mercator, Grid Zone 18, North American Datum 1983, with data supplied under licence by members of the Ontario Geospatial Data Exchange (OGDE), and Teranet Inc.  
Copyright 2022, Queens Printer of Ontario